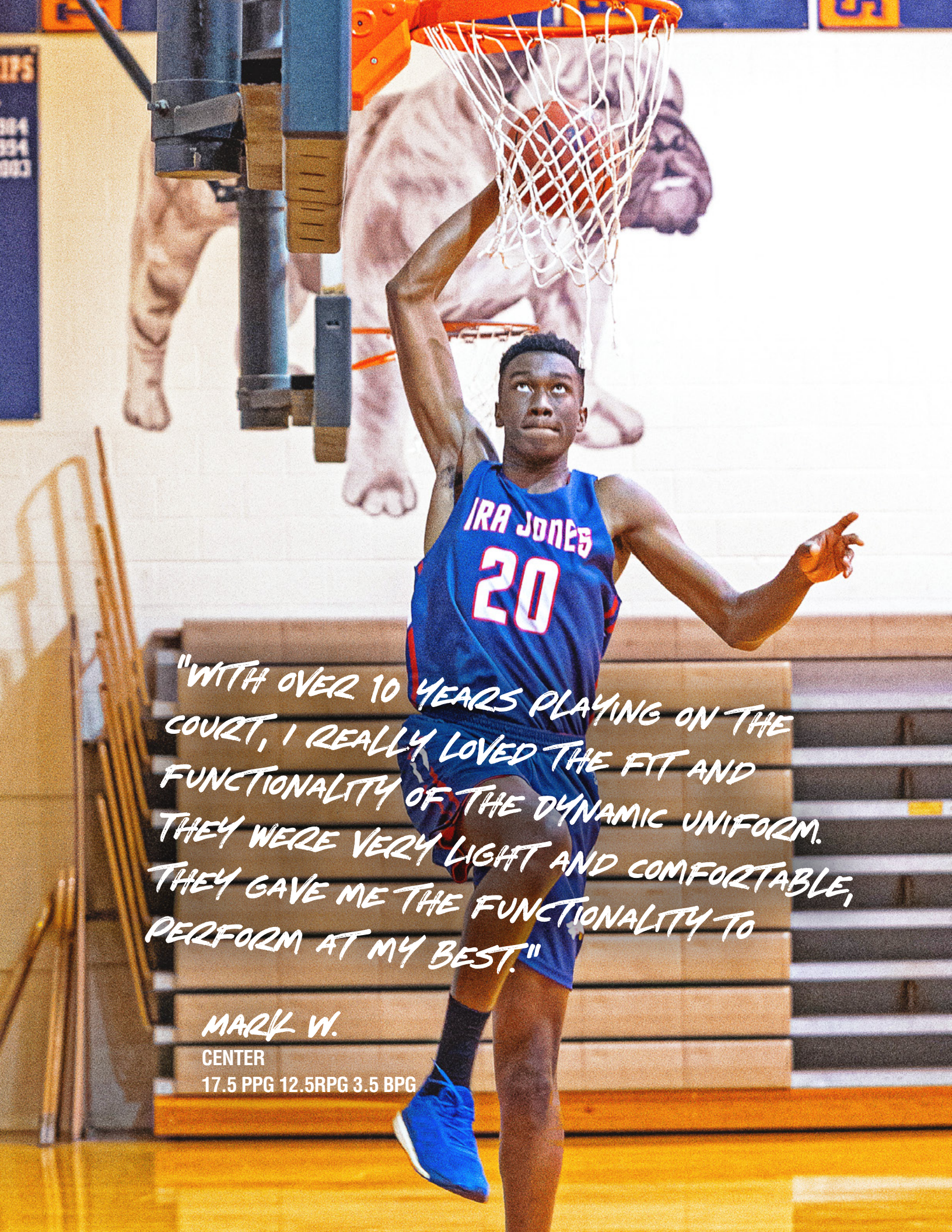





DYNAMIC

2019



"WITH OVER 10 YEARS PLAYING ON THE COURT, I REALLY LOVED THE FIT AND FUNCTIONALITY OF THE DYNAMIC UNIFORM. THEY WERE VERY LIGHT AND COMFORTABLE, THEY GAVE ME THE FUNCTIONALITY TO PERFORM AT MY BEST."

MARK W.

CENTER

17.5 PPG 12.5RPG 3.5 BPG

CONTENTS.

04
FROM OUR CEO

08
NEW IN 2019

07
HISTORY OF DYNAMIC

10
INTRODUCING AEROWEAR

SPORTS

13-22
BASEBALL

23-30
FASTPITCH

31-36
FOOTBALL

37-46
BASKETBALL

47-54
SOCCER

55-62
MEN'S LACROSSE

63-70
WOMEN'S LACROSSE
& FIELD HOCKEY

71-78
TRACK & FIELD

79-84
MEN'S VOLLEYBALL

85-92
WOMEN'S VOLLEYBALL

93-100
WRESTLING

101-108
ICE HOCKEY

109-115
FANWEAR

116
STRIDELINE SOCKS

117-123
PRO GEAR

DYNAMIC UNIFORMS ARE AVAILABLE IN:

YS–YXL and AS–AXXXL sizing. Dynamic offers Athletic and Relaxed fits.

**Please contact our sales team for any assistance regarding uniform sizing, availability and or uniform pricing.*



FROM OUR CEO

As you will see in these pages, Dynamic athletes are one of a kind. They are motivated by personal bests, focused on team achievement, and dedicated to their love of the game. Our 2019 line is inspired by these athletes, and this year we are proud to present some of our most innovative work: garments designed to highlight the athlete within.

This year we are pleased to launch our best-ever fabrics, made with all new top-of-the-line moisture wicking and cooling technologies, as well as our new products like our fanwear and Pro Gear. We've taken a determined eye to our cuts and styles, as always focused on creating the best garment we can. Achieving style without losing function, driving performance without sacrificing comfort.

The definition of the word Dynamic is *"in a constant state of change, or progress"*. It means a positive attitude, full of energy and new ideas. We applied this fresh-look philosophy to our 2019 line, and we look forward to working with you in the upcoming athletic year to continue reach past the boundaries of what a uniform can be.

Sincerely,
Dan Clarkson

C.E.O.
Virginia Beach, Virginia




"AS A BASEBALL PLAYER IT WAS ALWAYS
HARD TO FIND APPAREL WITH A RELAXING,
COMFORTABLE, AND ATTRACTIVE FIT.
DYNAMIC OFFERS ALL OF THOSE THINGS
AND MORE. THEY WOULD BE MY FIRST
CHOICE WHEN HEADED TO THE FIELD."

KURT S.

CATCHER

STRUCK OUT JUST 60 TIMES IN 420 AT BATS
DURING HIS FOUR-YEAR COLLEGE CAREER.

A young man with brown hair, wearing a blue and red football uniform, is captured in a three-point stance on a green football field. He is holding a brown football with both hands, ready to snap it. The background shows a blurred field with yard lines and some equipment. The text is overlaid on the lower half of the image.

"I HAVE BEEN PLAYING FOOTBALL FOR
OVER 8 YEARS AND I CAN CONFIDENTLY
SAY THE UNIFORMS FROM DYNAMIC
ARE SOME OF THE MOST UNIQUE AND
COMFORTABLE I HAVE EVER WORN
ON THE FIELD."

DAVID B.

TIGHT END/LINEBACKER/CAPTAIN
GRADUATING C/O 2019

HISTORY OF DYNAMIC.



1998

Peter Green Ltd. acquired North American Team Suppliers (NATS), a small Canadian sportswear manufacturer, Dynamic was formed.

2002

Dynamic became the first company to adopt digital sublimation.

2016

Relaunch of the Dynamic brand with a focus on new products and customer service.

2000

Dynamic introduces the first uniform configurator at a tradeshow before online configurators were available.

2004

Dynamic is the first to adopt a digital workflow, which reduced production times, increased the customization options and allowed for the starting of a workflow that produced consistent colors year after year.

2018

Dynamic was acquired by TDI Dynamic LLC, located in Virginia Beach, Virginia.

Dynamic is currently operating out of Toronto, Canada, at it's biggest capacity, with our production facility over 50,000 square feet and two sales offices located in Exton, Pennsylvania and Virginia Beach, Virginia.



ANYTHING BUT UNIFORM.

TAKING SPORTSWEAR TO A NEW LEVEL.

With 30 years of experience in uniform construction, design, and sublimation at our back, we are focused on taking our product to the next level in 2019. We have a renewed focus on uniform innovation and product diversity, and we are excited to introduce our newest ventures in this year's catalog.

REIMAGED FABRICS.

Our custom cut and sew process has been finely tuned over our decades of experience, and now we are upping the game with a revitalized line of fabrics. Our gear is now made with Maxidri, a moisture management fabric, and Microblock, an antibacterial fabric, both of which are designed to achieve ideal sports uniform durability and flexibility in addition to being functional.

DECK THE STANDS WITH FANWEAR.

Dynamic is known for its expertise in customization, and now we're taking it to the bleachers. Introducing our new line of fully sublimated fanwear, offering head-to-toe options from socks and leggings to hoodies and headbands. Choose from our styles or design your own custom gear to sell or share with your supporters. Interested in fundraising? Talk to us about our webstores to help you stock, sell and ship your gear with the click of a button.

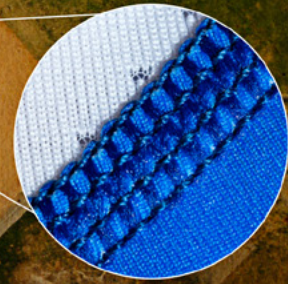
INTRODUCING PRO GEAR.

In 2019 we are excited to now offer a wide selection of screen printed and embroidered apparel for affordable uniforms, warm-up gear, and post-game wear. Create a completely custom order to match your sublimated uniform, or start a new team line with our foundational pieces built for teams of all levels.



INTRODUCING...

AERO WEAR



AEROWEAR FEATURES:

- ✓ Breathable Aero Fiber Body
- ✓ Compression Sleeves
- ✓ Fully Customizable/Sublimated
- ✓ Moisture Wicking & Antibacterial

AVAILABLE IN SHORT SLEEVE, LONG SLEEVE AND THREE QUARTER SLEEVE.



DYNAMIC
TEAM SPORTS

BUILT FOR COMFORT, MADE FOR ATHLETES.

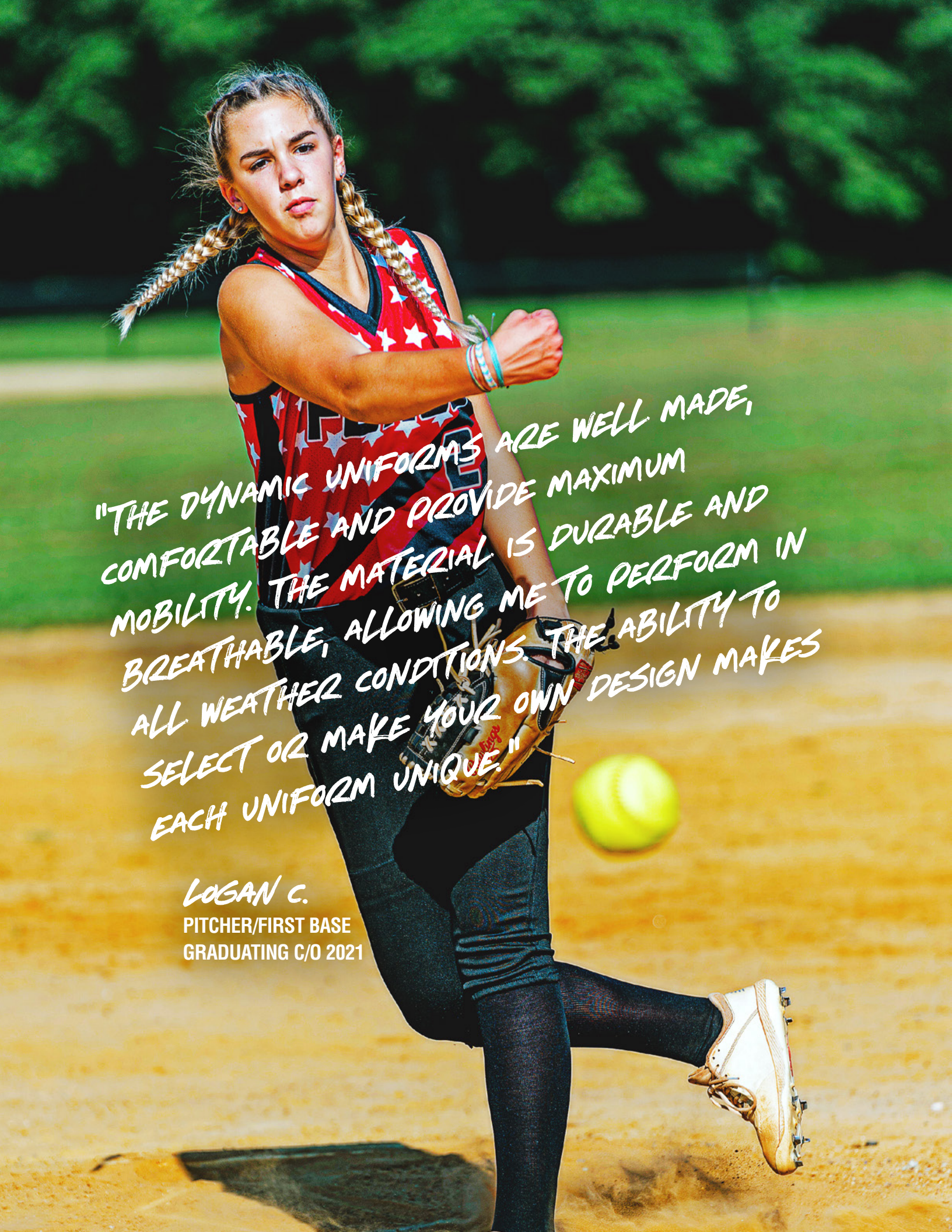
SHARE THE TEAM SPIRIT

WITH **ALL NEW** FULLY CUSTOM FANWEAR!



THE ONE-STOP-SHOP FOR YOUR ATHLETIC TEAM NEEDS:

- ✓ UNIFORMS
- ✓ WARM-UP GEAR
- ✓ LEISURE WEAR
- ✓ FANWEAR
- ✓ ACCESSORIES



"THE DYNAMIC UNIFORMS ARE WELL MADE,
COMFORTABLE AND PROVIDE MAXIMUM
MOBILITY. THE MATERIAL IS DURABLE AND
BREATHABLE, ALLOWING ME TO PERFORM IN
ALL WEATHER CONDITIONS. THE ABILITY TO
SELECT OR MAKE YOUR OWN DESIGN MAKES
EACH UNIFORM UNIQUE."

LOGAN C.
PITCHER/FIRST BASE
GRADUATING C/O 2021



2019 BASEBALL

BRING YOUR TEAM IDENTITY TO LIFE WITH FULLY CUSTOM GEAR



DIAMOND
(BS531)
FULL BUTTON
RAGLAN

COLOR 1:
BLACK

COLOR 2:
RED

COLOR 3:
WHITE

Available in youth and adult sizing, an assortment of durable, light weight fabrics and an unlimited design selection, Dynamic baseball has all bases covered when it comes to your teams' uniform needs. Test the boundaries of your imagination while designing a truly custom sublimated uniform or choose from one of our many catalog designs —whatever you decide is bound to be a home run!

Our full button jersey is offered in set-in or raglan style sleeves to accommodate your design vision, is available in your fabric of choice, offers a full front 6-button placket and is exactly what you need to achieve a professional baseball look.

Dynamic baseball pants are available in full length or knicker length, are durable enough to withstand the daily wear and tear that baseball pants demand and are custom designed to meet your styling specifications.



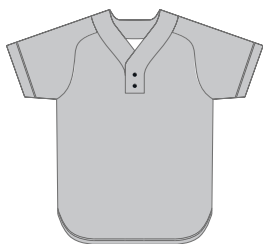
DIAMOND
(BS610)
FULL LENGTH
PANTS

COLOR 1:
RED

COLOR 2:
BLACK

COLOR 3:
BLACK

SELECT YOUR CUT



RAGLAN 2 BUTTON

(BS050)

- » Raglan sleeves
- » Scoop tail
- » Fully faced 2-button placket



RAGLAN FULL BUTTON

(BS531)

- » Raglan sleeves
- » Scoop tail
- » Fully faced full button front



SET IN SLEEVE FULL BUTTON

(BS053)

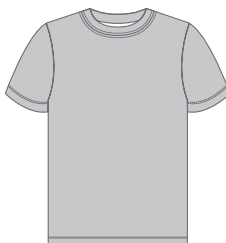
- » Set-in sleeves
- » Scoop tail
- » Fully faced full button front



SET IN 2 BUTTON

(BS052)

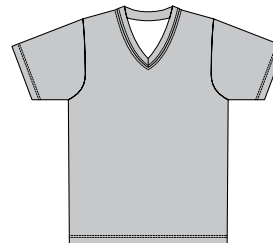
- » Self fabric 2 button placket
- » Set in sleeves
- » Straight hemmed bottom



THROWBACK

(BS605, BS606)

- » Performance fit t-shirt
- » Set-in sleeves
- » Available in crew or v-neck

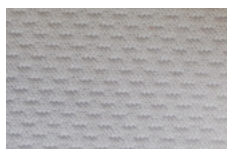


GAME TEE

(BS607, BS608)

- » Relaxed fit
- » Set-in sleeves
- » Straight hemmed bottom
- » Available in crew or v-neck

RECOMMENDED FABRICS



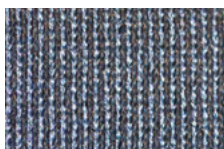
DYNA DRY

A flat-backed mock mesh, moisture wicking performance fabric. (100% Polyester)



FLEX DRY

Light weight, breathable, two-way stretch with moisture management. (90% Polyester / 10% Spandex)



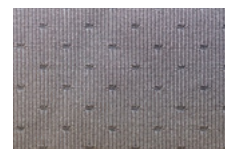
DRY TEC

Light weight, micro fiber, pique moisture wicking fabric. Smooth, flat face, without texture. (100% Polyester)



DURAFIBER

Durable, heavy weight yet breathable, moisture wicking double knit. (100% Polyester)



AEROFIBER

Light weight, stretchable and breathable, open pin hole mesh. Moisture wicking, four-way stretch, performance fabric. (90% Polyester / 10% Spandex)





CHANGE UP
(BS053)
FULL BUTTON
SET IN

COLOR 1: ORANGE
COLOR 2: BLACK
COLOR 3: WHITE



BULLPEN
(BS053)
FULL BUTTON
SET IN

COLOR 1: 75% BLACK
COLOR 2: LIME
COLOR 3: BLACK
COLOR 4: WHITE



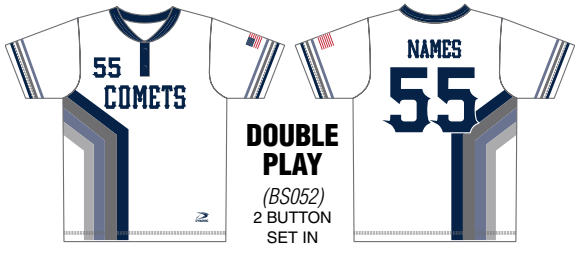
CLOSER
(BS053)
FULL BUTTON
SET IN

COLOR 1: TONAL CAMO
COLOR 2: RED
COLOR 3: BLACK



FLY BALL
(BS052)
2 BUTTON
SET IN

COLOR 1: MAROON
COLOR 2: VEGAS
COLOR 3: WHITE



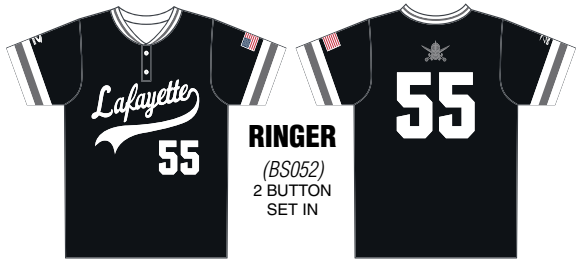
DOUBLE PLAY
(BS052)
2 BUTTON
SET IN

COLOR 1: WHITE
COLOR 2: NAVY
COLOR 3: 50% BLACK
COLOR 4: 50% NAVY
COLOR 5: 25% BLACK



LEAD OFF
(BS052)
2 BUTTON
SET IN

COLOR 1: ORANGE
COLOR 2: BLACK
COLOR 3: GRADIENT



RINGER
(BS052)
2 BUTTON
SET IN

COLOR 1: BLACK
COLOR 2: 75% BLACK
COLOR 3: WHITE



SLIDER
(BS531)
FULL BUTTON
RAGLAN

COLOR 1: RED
COLOR 2: NAVY



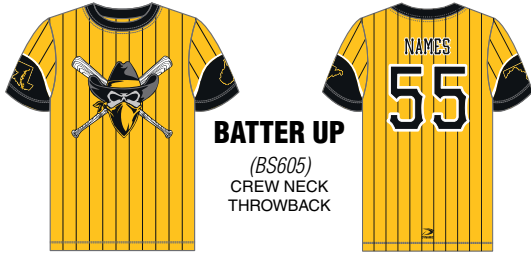
BATTER
(BS053)
FULL BUTTON
RAGLAN

COLOR 1: GOLD
COLOR 2: NAVY
COLOR 3: SKY
COLOR 4: LT BLUE



CLEANUP
(BS531)
FULL BUTTON
RAGLAN

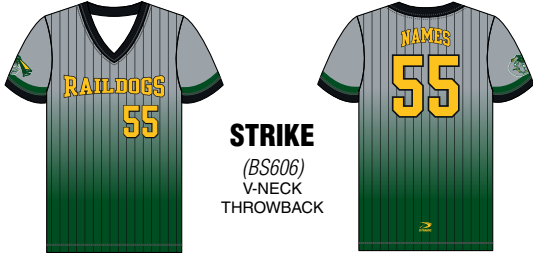
COLOR 1: WHITE
COLOR 2: BLACK
COLOR 3: RED



COLOR 1: GOLD
COLOR 2: BLACK
COLOR 3: WHITE



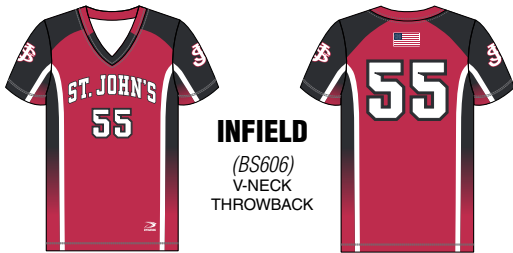
COLOR 1: ROYAL
COLOR 2: BLACK
COLOR 3: 75% BLACK
COLOR 4: WHITE



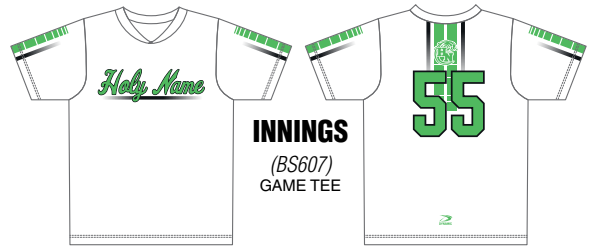
COLOR 1: SILVER
COLOR 2: FOREST
COLOR 3: BLACK



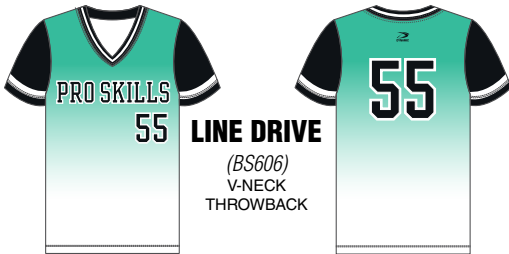
COLOR 1: PINK
COLOR 2: BLACK



COLOR 1: RED
COLOR 2: BLACK
COLOR 3: WHITE



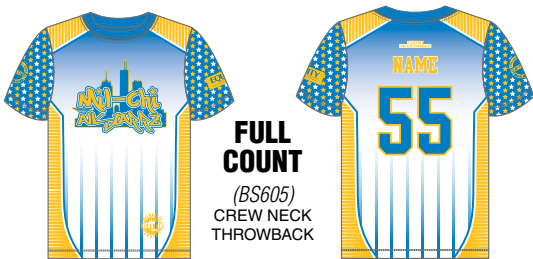
COLOR 1: WHITE
COLOR 2: LIME
COLOR 3: BLACK



COLOR 1: TEAL
COLOR 2: WHITE
COLOR 3: BLACK



COLOR 1: 75% BLACK
COLOR 2: RED
COLOR 3: WHITE



COLOR 1: ROYAL
COLOR 2: WHITE
COLOR 3: GOLD



COLOR 1: WHITE
COLOR 2: NAVY
COLOR 3: RED



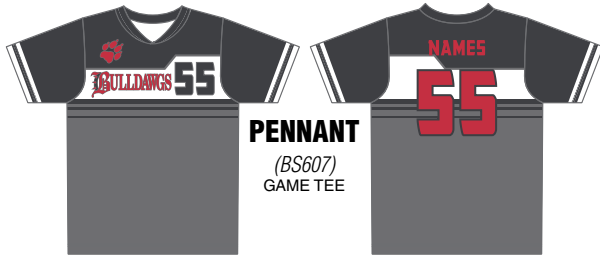
GROUND BALL
(BS607)
GAME TEE

COLOR 1: ORANGE
COLOR 2: ROYAL



NO HITTER
(BS050)
RAGLAN 2
BUTTON

COLOR 1: 75% BLACK
COLOR 2: LIME CAMO
COLOR 3: BLACK



PENNANT
(BS607)
GAME TEE

COLOR 1: 50% BLACK
COLOR 2: 75% BLACK
COLOR 3: WHITE



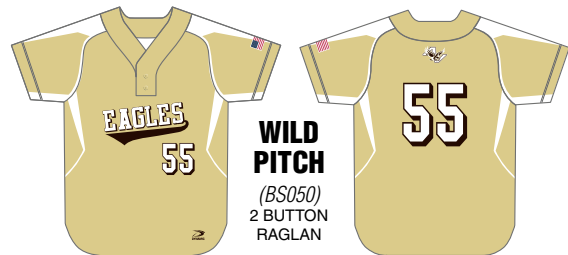
BUNT
(BS050)
RAGLAN 2
BUTTON

COLOR 1: BLACK CAMO
COLOR 2: VEGAS
COLOR 3: WHITE



FASTBALL
(BS608)
GAME TEE

COLOR 1: ORANGE
COLOR 2: BLACK
COLOR 3: 75% BLACK



WILD PITCH
(BS050)
2 BUTTON
RAGLAN

COLOR 1: VEGAS
COLOR 2: WHITE



CENTERFIELD
(BS607)
GAME TEE

COLOR 1: LIME
COLOR 2: 75% BLACK
COLOR 3: 50% BLACK
COLOR 4: BLACK
COLOR 5: WHITE



WALK OFF
(BS531)
FULL BUTTON
RAGLAN

COLOR 1: 75% BLACK
COLOR 2: RED
COLOR 3: RED CAMO
COLOR 4: BLACK



DINGER
(BS050)
RAGLAN 2
BUTTON

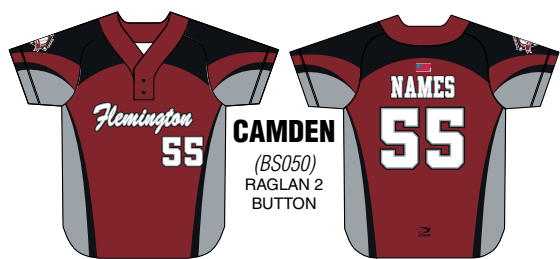
COLOR 1: 75% BLACK
COLOR 2: WHITE
COLOR 3: PURPLE



SOX
(BS608)
GAME TEE

COLOR 1: BLACK
COLOR 2: GOLD
COLOR 3: WHITE

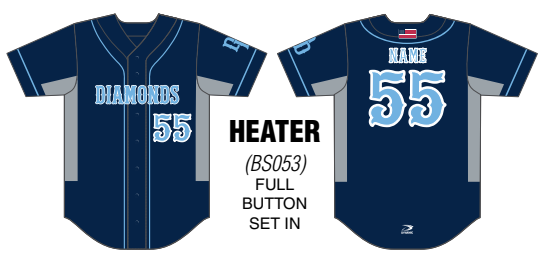




COLOR 1: CARDINAL
COLOR 2: BLACK
COLOR 3: SILVER



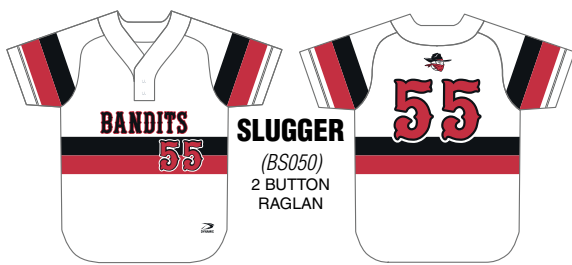
COLOR 1: NAVY
COLOR 2: HUNTER
COLOR 3: WHITE



COLOR 1: NAVY
COLOR 2: SILVER
COLOR 3: SKY



COLOR 1: NAVY
COLOR 2: GOLD
COLOR 3: SILVER
COLOR 4: WHITE



COLOR 1: WHITE
COLOR 2: BLACK
COLOR 3: RED



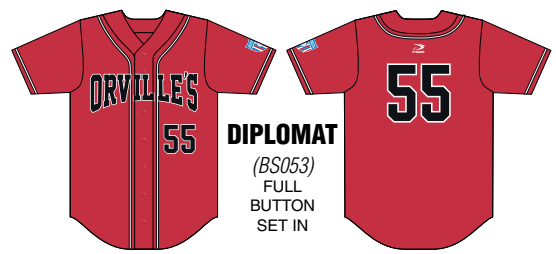
COLOR 1: BLACK
COLOR 2: GOLD



COLOR 1: BLACK
COLOR 2: 75% BLACK
COLOR 3: WHITE



COLOR 1: 75% BLACK
COLOR 2: WHITE
COLOR 3: ROYAL

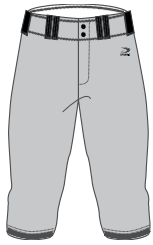


COLOR 1: RED
COLOR 2: WHITE
COLOR 3: BLACK



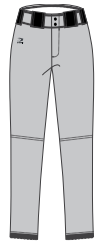
COLOR 1: SILVER
COLOR 2: NAVY
COLOR 3: RED
COLOR 4: WHITE

SUGGESTED ADD-ONS



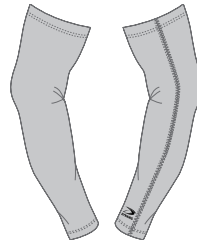
KNICKER PANT

Knee-high style pants with elastic bottoms. Bar tacked tunnel belt loops, metal zipper fly with two snap closure, double knee construction, two double welted back pockets.



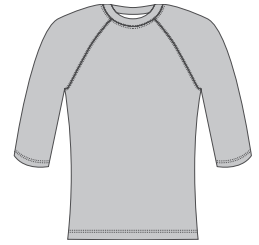
FULL LENGTH PANT

Bar tacked tunnel belt loops, metal zipper fly with two snap closure, double knee construction, Two double welted back pockets. Open bottom leg opening.



COMPRESSION SLEEVE

Bicep to wrist length. Made of light weight, breathable, moisture wicking fabric.



BASE LAYER

Made of breathable, light weight, moisture wicking fabric. Available in multiple sleeve lengths.



DYNAMIC

FASTPITCH



2019 FASTPITCH

FABRICS FOR THOSE TOUGH ENOUGH TO PLAY BALL LIKE A GIRL



SINGLE
(SB66)
V-NECK
THROWBACK

COLOR 1:
GOLD

COLOR 2:
BLACK

COLOR 3:
SILVER

Available in youth and adult sizing, an unrivaled selection of light weight, breathable fabrics, and an infinite array of uniform designs.

Throwback Tees are available in a crew neck or v-neck finish, are constructed using the fabric of your choice, feature a serge seam to accommodate a sleek, seamless transition from panel to panel, and can be designed to meet your needs—whatever they may be.

Dynamic Fastpitch pants are available in full length or knicker length, are durable enough to withstand the daily wear that softball pants demand, and are custom designed to meet your styling specifications.



SINGLE
(SB61W)
KNICKER PANT

COLOR 1:
BLACK

COLOR 2:
GOLD

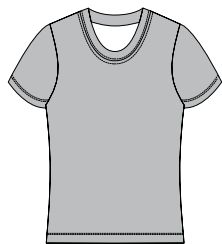
COLOR 3:
SILVER

SELECT YOUR CUT



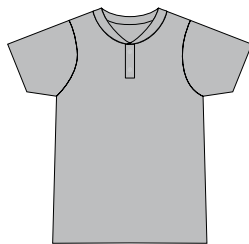
SET IN FULL BUTTON
(SB53W)

- » Fully faced full button front
- » Set-in sleeves
- » Scoop tail



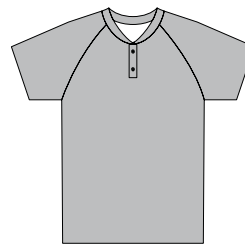
THROWBACK
(SB65W, SB66W)

- » Performance fit t-shirt
- » Set-in sleeves
- » Available in crew or v-neck



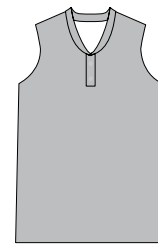
SET IN 2 BUTTON
(SB50W)

- » Self fabric 2-button placket
- » Set-in sleeves
- » Straight hemmed bottom



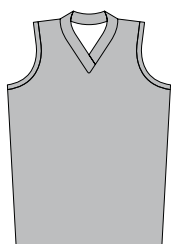
RAGLAN 2 BUTTON
(SB57W)

- » Fully faced 2-button placket
- » Raglan sleeves
- » 2-button placket
- » Straight hemmed bottom



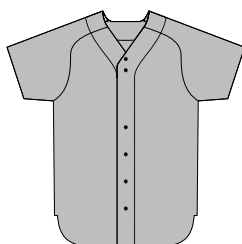
SLEEVELESS 2 BUTTON
(SB51W)

- » 2-button placket
- » Straight hemmed bottom



SLEEVELESS
(SB52W, SB58W, SB55W)

- » Available in crew neck, v-neck, tank or racerback
- » Straight hemmed bottom
- » Single color binding option for armholes



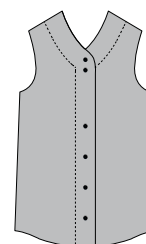
RAGLAN FULL BUTTON
(SB56W)

- » Full button facing at center front
- » Raglan sleeves
- » Scoop tail



GAME TEE
(SB67W, SB68W)

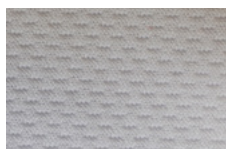
- » Available in crew or v-neck
- » Relaxed fit
- » Set-in sleeves
- » Straight hemmed bottom



SLEEVELESS FULL BUTTON
(SB54W)

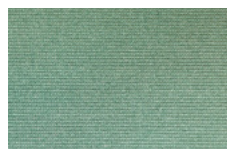
- » Fully faced full button front
- » Buttons spaced 4" apart for lettering
- » Curved hemmed bottom

RECOMMENDED FABRICS



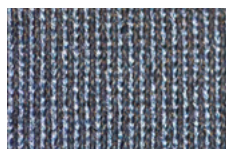
DYNA DRY

A flat-backed mock mesh, moisture wicking performance fabric.
(100% Polyester)



FLEX DRY

Breathable, light weight, two-way stretch with moisture management.
(90% Polyester / 10% Spandex)



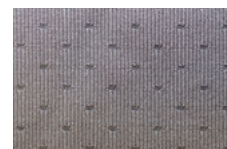
DRY TEC

Lightweight, micro fiber, pique moisture wicking fabric. Smooth, flat face, without texture.
(100% Polyester)



DURAFIBER

Durable, heavy weight yet breathable, moisture wicking double knit.
(100% Polyester)



AEROFIBER

Lightweight, stretchable and breathable, open pin hole mesh. Moisture wicking, four-way stretch, performance fabric.
(90% Polyester / 10% Spandex)





COLOR 1: BLACK
COLOR 2: RED



COLOR 1: WHITE
COLOR 2: RED
COLOR 3: NAVY



COLOR 1: NAVY
COLOR 2: 85% NAVY
COLOR 3: 50% BLACK
COLOR 4: WHITE



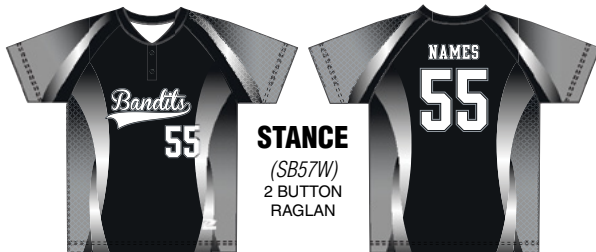
COLOR 1: WHITE
COLOR 2: GOLD
COLOR 3: PURPLE



COLOR 1: BLACK
COLOR 2: 50% BLACK



COLOR 1: WHITE
COLOR 2: BLACK
COLOR 3: ROYAL



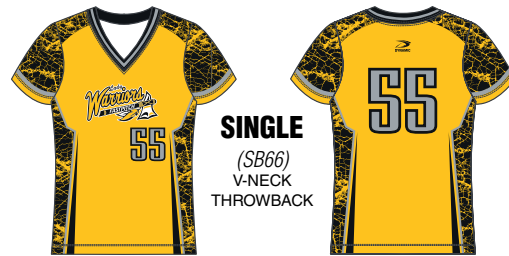
COLOR 1: BLACK
COLOR 2: 50% BLACK
COLOR 3: WHITE



COLOR 1: SKY
COLOR 2: 50% BLACK
COLOR 3: NAVY



COLOR 1: WHITE
COLOR 2: NAVY
COLOR 3: GOLD



COLOR 1: GOLD
COLOR 2: BLACK
COLOR 3: SILVER



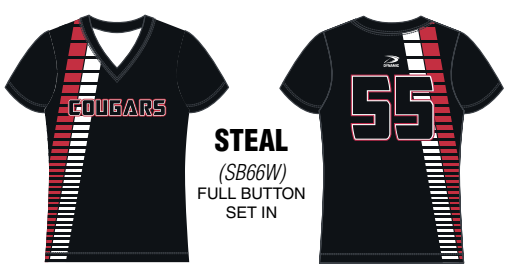
BATTER
(SB66W)
V-NECK
THROWBACK

COLOR 1: BLACK
COLOR 2: GOLD
COLOR 3: WHITE



ACE
(SB55W)
SLEEVELESS
RACERBACK

COLOR 1: RED
COLOR 2: BLACK
COLOR 3: WHITE



STEAL
(SB66W)
FULL BUTTON
SET IN

COLOR 1: BLACK
COLOR 2: RED
COLOR 3: WHITE



RELIEF
(SB55W)
SLEEVELESS
RACERBACK

COLOR 1: ORANGE
COLOR 2: BLACK



NO HITTER
(SB58W)
SLEEVELESS
TANK

COLOR 1: WHITE
COLOR 2: ROYAL
COLOR 3: GOLD



UTILITY
(SB55W)
SLEEVELESS
RACERBACK

COLOR 1: LIME
COLOR 2: NAVY
COLOR 3: WHITE



CATCHER
(SB58W)
SLEEVELESS
TANK

COLOR 1: WHITE
COLOR 2: GOLD
COLOR 3: NAVY



BLAZE
(SB55W)
SLEEVELESS
RACERBACK

COLOR 1: RED
COLOR 2: BLACK
COLOR 3: WHITE



SERIES
(SB51W)
2 BUTTON
SLEEVELESS

COLOR 1: RED
COLOR 2: BLACK
COLOR 3: WHITE



PRIDE
(SB58W)
SLEEVELESS
TANK

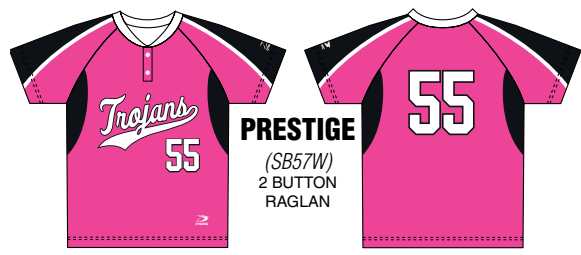
COLOR 1: GOLD
COLOR 2: NAVY
COLOR 3: WHITE



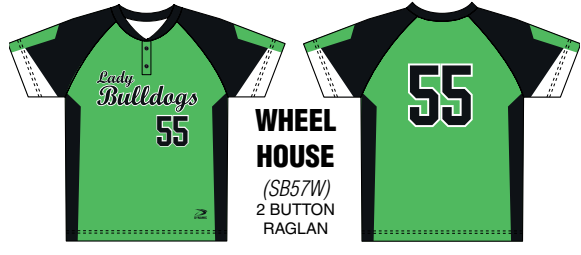
COLOR 1: RED
COLOR 2: BLACK
COLOR 3: DIG CAMO



COLOR 1: ROYAL
COLOR 2: RED
COLOR 3: WHITE



COLOR 1: PINK
COLOR 2: BLACK
COLOR 3: WHITE



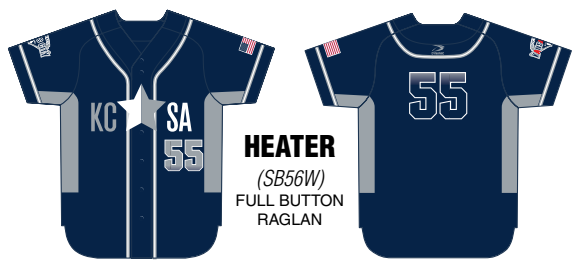
COLOR 1: KELLY
COLOR 2: BLACK
COLOR 3: WHITE



COLOR 1: NAVY
COLOR 2: GOLD
COLOR 3: 50% BLACK
COLOR 4: WHITE



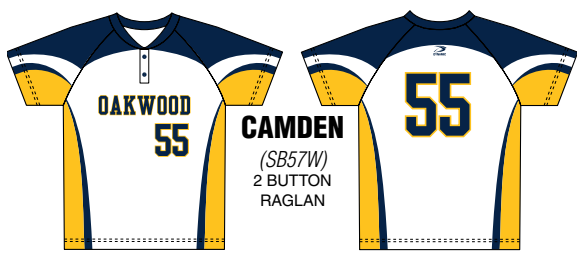
COLOR 1: SKY
COLOR 2: RED
COLOR 3: ROYAL



COLOR 1: NAVY
COLOR 2: SILVER
COLOR 3: WHITE

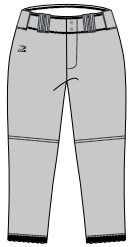


COLOR 1: WHITE
COLOR 2: NAVY



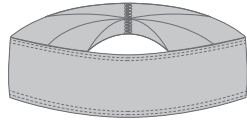
COLOR 1: WHITE
COLOR 2: GOLD
COLOR 3: NAVY

SUGGESTED ADD-ONS



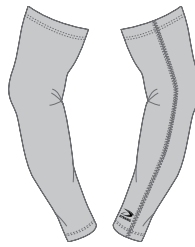
KNICKER PANT

Bar tacked tunnel belt loops, metal zipper fly with two snap closure, Double knee construction, and two double welted back pockets.



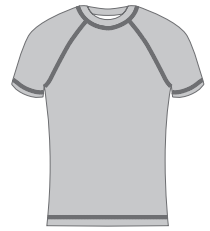
HEADBAND

2" height. One size fits all. Made of breathable, light weight, moisture wicking fabric. Two fabric options available.



COMPRESSION SLEEVE

Bicep to wrist length. Made of light weight, breathable, moisture wicking fabric.



BASE LAYER

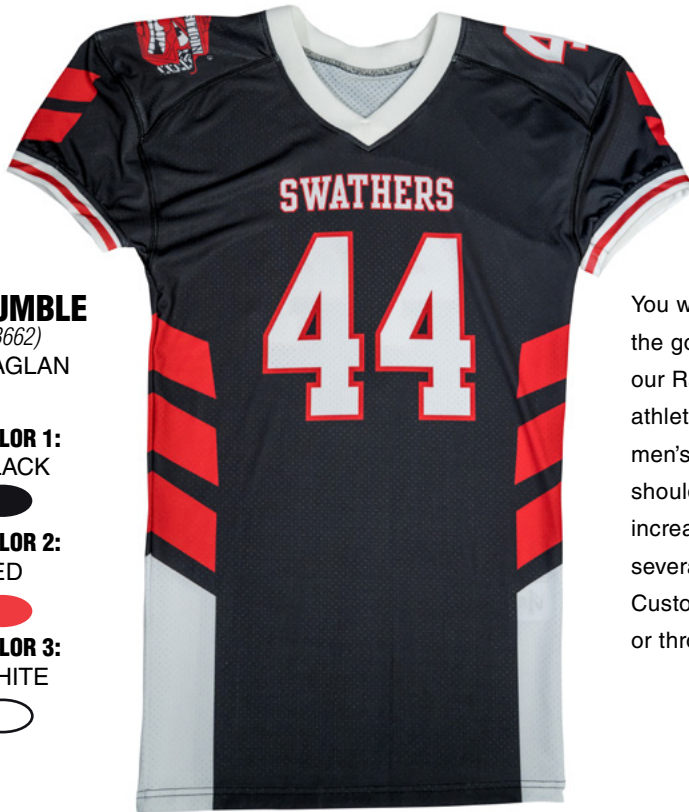
Made of breathable, light weight, moisture wicking fabric. Available in multiple sleeve lengths.





2019 FOOTBALL

TAKE IT TO THE HOUSE IN OUR NEW CUSTOM FLAT FRONT PANTS



FUMBLE
(FB662)
RAGLAN

COLOR 1:
BLACK



COLOR 2:
RED



COLOR 3:
WHITE



You will be feeling like you just crossed the goal line every time you put on our Raglan Cut football uniform. This athletic, form fitting cut is available in men's or youth sizing, features double shoulders and a three-needle finish for increased durability, and is available in several durable yet lightweight fabrics. Customize one of our new catalog designs or throw a hail-mary and go full custom.

Football Pants to match feature sewn in pad pockets to accommodate your safety needs, have built in slots for belt loop accessibility, and are constructed in our ultra-durable PolyFlex fabric.



FUMBLE
(FB05022)
FLAT FRONT
PANTS

COLOR 1:
BLACK



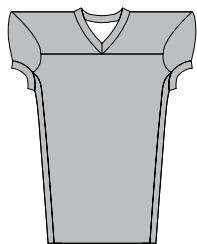
COLOR 2:
RED



COLOR 3:
WHITE



SELECT YOUR CUT



LINEMAN

(FB661)

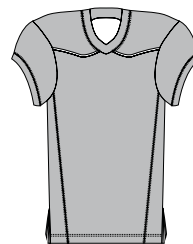
- » Dual fabric capability
- » 4" sewn-in side panel
- » Relaxed fit construction
- » Knit mitered v-neck and arm trim



RAGLAN

(FB662)

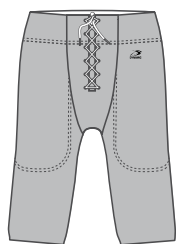
- » Single-fabric uniform option
- » Form fitting construction
- » Self-fabric or knit mitered v-neck and arm trim



SKILLS

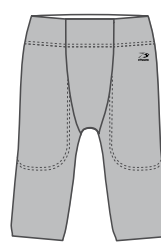
(FB663)

- » Multi fabric design
- » Contoured yoke
- » Sewn in piping (between body and yoke)
- » Side panels
- » V-neck and arm trim



LACE FRONT PANTS

- » Drawstring at center front gusset
- » 2.5" elastic inside waist
- » Flatlock seam construction
- » Also available with 3" side panel



FLAT FRONT PANTS

- » Flat front gusset
- » 2.5" elastic inside waist
- » Center front gusset.
- » Flatlock seam construction
- » Waistband slits for belt

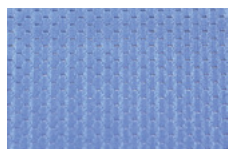
RECOMMENDED FABRICS



HEAVY DAZZLE

High shine, heavy weight, strong & durable.

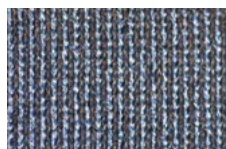
(100% Polyester)



RICE MESH

Open hole, pro bright mesh, mid weight, durable performance driven.

(100% Polyester)



AEROFIBER

Light weight, stretchable and breathable, open pin hole mesh. Moisture wicking, four-way stretch, performance fabric.

(90% Polyester / 10% Spandex)



POLY-FLEX

Heavy weight, stretchable, and abrasion resistant.

(90% Polyester / 10% Spandex)



VICTORY
(FB663)
SKILLS

COLOR 1: BLACK
COLOR 2: RED
COLOR 3: WHITE



ADVERSARY
(FB663)
SKILLS

COLOR 1: BLACK
COLOR 2: GOLD
COLOR 3: SILVER
COLOR 3: BLACK



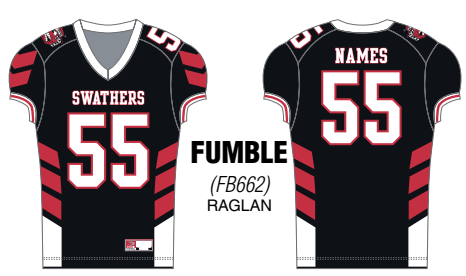
COMBAT
(FB663)
SKILLS

COLOR 1: KELLY
COLOR 2: BLACK
COLOR 3: WHITE
COLOR 4: BLACK



ATTACK
(FB663)
SKILLS

COLOR 1: ORANGE
COLOR 2: DOT CAMO
COLOR 3: BLACK



FUMBLE
(FB662)
RAGLAN

COLOR 1: BLACK
COLOR 2: RED
COLOR 3: WHITE



LATERAL
(FB662)
RAGLAN

COLOR 1: BLACK
COLOR 2: SILVER
COLOR 3: WHITE



PUNT
(FB662)
RAGLAN

COLOR 1: BLACK
COLOR 2: ROYAL
COLOR 3: RED



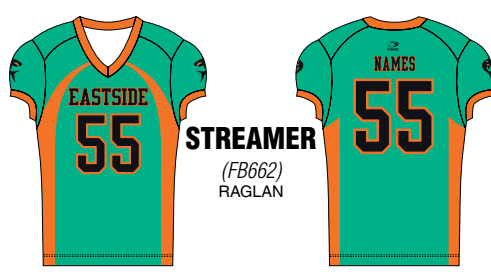
RUSH
(FB662)
RAGLAN

COLOR 1: GOLD TO NAVY
COLOR 2: WHITE TO NAVY
COLOR 3: GOLD



RENEGADE
(FB662)
RAGLAN

COLOR 1: ORANGE
COLOR 2: BLACK
COLOR 3: SILVER



STREAMER
(FB662)
RAGLAN

COLOR 1: TEAL
COLOR 2: ORANGE

**DOMINATOR***(FB662)*
RAGLAN

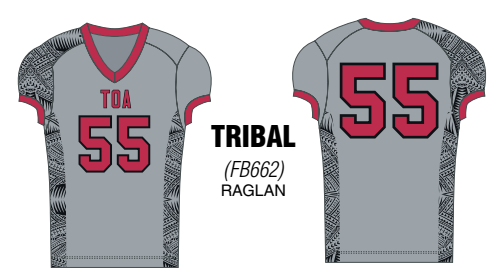
- COLOR 1:** PURPLE
COLOR 2: BLACK
COLOR 3: 50% PURPLE

**WINGS***(FB662)*
RAGLAN

- COLOR 1:** BLACK
COLOR 2: TEAL
COLOR 3: WHITE
COLOR 4: SILVER

**STARS N' STRIPES***(FB662)*
RAGLAN

- COLOR 1:** SILVER

**TRIBAL***(FB662)*
RAGLAN

- COLOR 1:** SILVER
COLOR 2: BLACK

**AGGRESSOR***(FB661)*
LINEMAN

- COLOR 1:** BLACK
COLOR 2: RED
COLOR 3: WHITE

**BLITZ***(FB661)*
LINEMAN

- COLOR 1:** RED
COLOR 2: NAVY
COLOR 2: BLACK

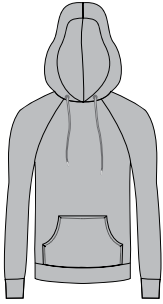
**OFFENSE***(FB661)*
LINE MAN

- COLOR 1:** KELLY
COLOR 2: HUNTER

**DEFENSE***(FB661)*
LINEMAN

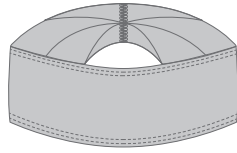
- COLOR 1:** BLACK
COLOR 2: SILVER
COLOR 3: ROYAL

SUGGESTED ADD-ONS



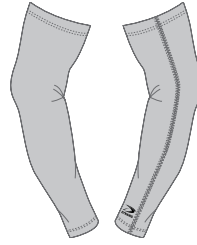
PULL OVER HOODIE

Fully lined hood. Raglan sleeves with cuffs. Pouch pocket. Available in light and medium weight fleece.



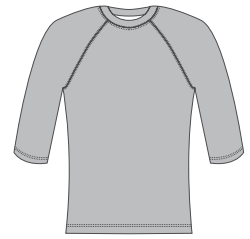
HEADBAND

4" height. One size fits all. Made of breathable, light weight, moisture wicking fabric. Two fabric options available.



COMPRESSION SLEEVE

Bicep to wrist length. Made of light weight, breathable, moisture wicking fabric.



BASE LAYER

Made of breathable, light weight, moisture wicking fabric. Available in multiple sleeve lengths.





2019 BASKETBALL

PRO LEVEL FABRICS AT BUZZER BEATING PRICES



BASELINE
(BB100)
REVERSIBLE
GAME JERSEY

COLOR 1:
HUNTER



COLOR 2:
WHITE



COLOR 3:
GOLD



From the time you tip-off until the clock hits zero, our lightweight, breathable fabrics and custom designs will keep you feeling cool and looking even cooler.

Choose from one of our catalog designs or create a unique custom design that will have your team looking good on the hardwood.



BASELINE
(BB604)
FULL CUT
SHORTS

COLOR 1:
HUNTER



COLOR 2:
WHITE



COLOR 3:
GOLD



Our 100 Series basketball uniforms are available in men's, women's, and youth sizing, come standard with a sewn in v-neck, sewn-in fixed-width 3" side panel, and sewn-in arm trim upon request.

Matching shorts are available in 7", 9" or 11" inseams, come standard with a gripper elastic waistline to ensure clean tuck for the duration of playing time and feature a drawstring to achieve the optimal fit.



REVERSIBLE UNIFORMS! Any design you see with this symbol can be purchased as a style on its own or made into a reversible color uniform.

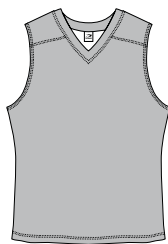
SELECT YOUR CUT



GAME

(BB100)

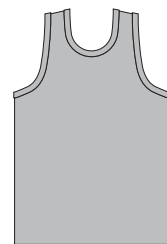
- » Flatlock seam construction
- » 4" Side panel inserts
- » V-neck or fusion neck available
- » Single or double ply reversible available
- » Also available in women's



400 SERIES

(BB400)

- » Flatlock seam construction
- » Shoulder inserts
- » Front panel wraps to back
- » V-neck or fusion neck available
- » Single or double ply reversible available
- » Also available in women's

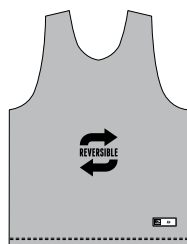


NEW CUT

RETRO

(BB350)

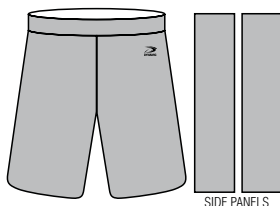
- » Two panels, crew neck
- » Serged seam construction
- » Neck and arm trim
- » Straight hemmed bottom
- » Single or double ply reversible available
- » Also available in women's



PRACTICE REVERSIBLE

(BB300, BB301)

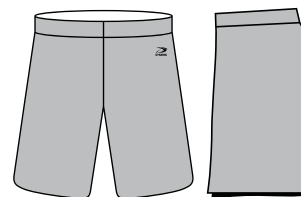
- » Two panels, round neck
- » Flatlock seam construction
- » Straight hemmed bottom
- » Single or double ply reversible available
- » Also available in women's



150 SHORTS

(BB601)

- » 4" side panels
- » 2" gripper elastic waistband with drawstring
- » 7", 9" and 11" inseam lengths available

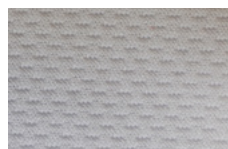


FULL CUT SHORTS

(BB604)

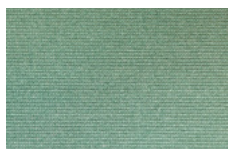
- » Ideal for large artwork
- » 2" covered elastic waistband with drawstring
- » 7", 9" and 11" inseam lengths available

RECOMMENDED FABRICS



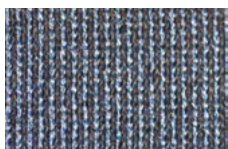
DYNA DRY

A flat-backed mock mesh, moisture wicking performance fabric.
(100% Polyester)



FLEX DRY

Breathable, light weight, two-way stretch with moisture management.
(90% Polyester / 10% Spandex)



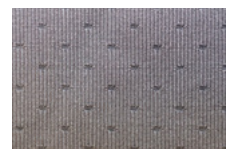
DRY TEC

Lightweight, micro fiber, pique moisture wicking fabric. Smooth, flat face, without texture.
(100% Polyester)



DUAL WICK

Double knit, mesh look, mid weight, breathable, moisture wicking fabric. Suggested for single ply reversibles.



AEROFIBER

Lightweight, stretchable and breathable, open pin hole mesh. Moisture wicking, four-way stretch, performance fabric. (90% Polyester / 10% Spandex)





BACKCOURT

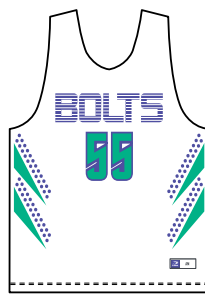
(BB301)
REVERSIBLE
PRACTICE JERSEY

(BB604)
FULL CUT
SHORTS



COLOR 1: NAVY
COLOR 2: RED
COLOR 3: WHITE

COLOR 1: RED
COLOR 2: NAVY
COLOR 3: WHITE



FADEAWAY

(BB301)
REVERSIBLE
PRACTICE JERSEY

(BB604)
FULL CUT
SHORTS



COLOR 1: WHITE
COLOR 2: TEAL
COLOR 3: PURPLE

COLOR 1: TEAL
COLOR 2: PURPLE
COLOR 3: BLACK



ASSIST

(BB301)
REVERSIBLE
PRACTICE JERSEY

(BB604)
FULL CUT
SHORTS



COLOR 1: WHITE
COLOR 2: BLACK
COLOR 3: RED

COLOR 1: BLACK
COLOR 2: WHITE
COLOR 3: RED



BASELINE

(BB100)
REVERSIBLE
GAME JERSEY

(BB604)
FULL CUT
SHORTS



COLOR 1: WHITE
COLOR 2: GOLD
COLOR 3: HUNTER

COLOR 1: HUNTER
COLOR 2: WHITE
COLOR 3: GOLD



CROSSOVER

(BB100)
REVERSIBLE
GAME JERSEY

(BB604)
FULL CUT
SHORTS



COLOR 1: SILVER
COLOR 2: WHITE
COLOR 3: BLACK

COLOR 1: BLACK
COLOR 3: WHITE
COLOR 2: 50% BLACK



DUNK

(BB100)
GAME JERSEY

(BB604)
FULL CUT
SHORTS



COLOR 1: RED
COLOR 2: BLACK

DRIBBLE
(BB100) GAME JERSEY
(BB604) FULL CUT SHORTS

COLOR 1: WHITE
 COLOR 2: GOLD
 COLOR 3: BLACK

HANG TIME
(BB100) GAME JERSEY
(BB604) FULL CUT SHORTS

COLOR 1: SILVER
 COLOR 2: GOLD
 COLOR 3: WHITE
 COLOR 4: BLACK

TURNOVER
(BB100) GAME JERSEY
(BB604) FULL CUT SHORTS

COLOR 1: BLACK
 COLOR 2: 50% BLACK
 COLOR 3: 25% BLACK
 COLOR 4: TEAL

MAURADER
(BB100) GAME JERSEY
(BB601) 150 SERIES SHORTS

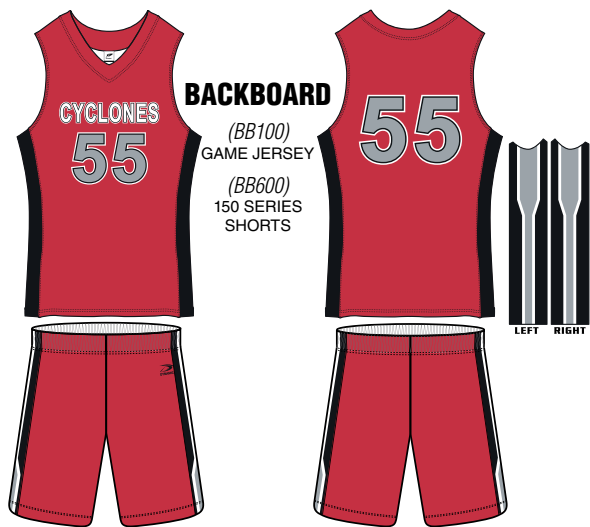
COLOR 1: ORANGE
 COLOR 2: NAVY
 COLOR 3: WHITE

CHARGE
(BB100) GAME JERSEY
(BB604) FULL CUT SHORTS

COLOR 1: NAVY
 COLOR 2: ORANGE
 COLOR 3: WHITE

SWISH
(BB100) GAME JERSEY
(BB604) FULL CUT SHORTS

COLOR 1: ORANGE
 COLOR 2: ROYAL
 COLOR 3: OLD
 COLOR 4: WHITE



BACKBOARD

(BB100)
GAME JERSEY
(BB600)
150 SERIES
SHORTS

- COLOR 1:** RED
- COLOR 2:** BLACK
- COLOR 3:** WHITE
- COLOR 4:** SILVER



BRICK

(BB100)
GAME JERSEY
(BB601)
150 SERIES
SHORTS

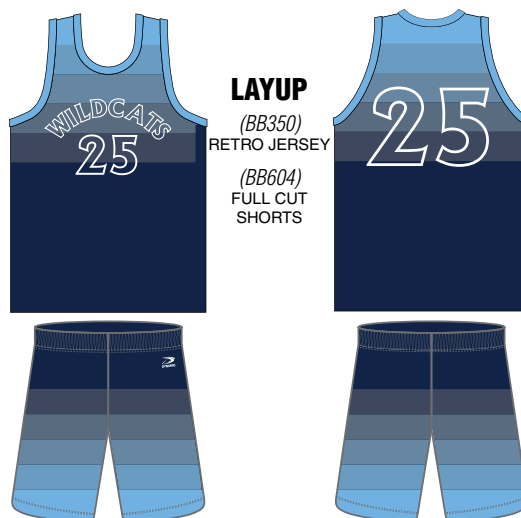
- COLOR 1:** BLACK
- COLOR 2:** KELLY
- COLOR 3:** 75% BLACK
- COLOR 4:** YELLOW



DIAMOND 2

(BB100)
GAME JERSEY
(BB601)
150 SERIES
SHORTS

- COLOR 1:** WHITE
- COLOR 2:** MAROON
- COLOR 3:** GOLD
- COLOR 4:** WHITE



LAYUP

(BB350)
RETRO JERSEY
(BB604)
FULL CUT
SHORTS

- COLOR 1:** NAVY
- COLOR 2:** SKY



POST UP

(BB35521)
RETRO JERSEY
(BB604)
FULL CUT
SHORTS

- COLOR 1:** NAVY
- COLOR 2:** VEGAS



FREE THROW

(BB400)
400 SERIES
JERSEY
(BB604)
FULL CUT
SHORTS

- COLOR 1:** NAVY
- COLOR 2:** GOLD
- COLOR 3:** WHITE





ALLEY OOP

(BB400)
400 SERIES
JERSEY
(BB604)
FULL CUT
SHORTS

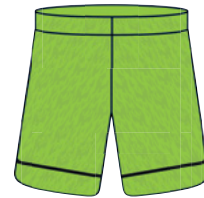


COLOR 1: WHITE
COLOR 2: GOLD
COLOR 3: BLACK



BLOCKER

(BB400)
400 SERIES
JERSEY
(BB604)
FULL CUT
SHORTS



COLOR 1: LIME
COLOR 2: BLACK



BREAKER

(BB400)
400 SERIES
JERSEY
(BB604)
FULL CUT
SHORTS



COLOR 1: FOREST
COLOR 2: WHITE
COLOR 3: BLACK



CARRY

(BB400)
400 SERIES
JERSEY
(BB604)
FULL CUT
SHORTS



COLOR 1: GOLD
COLOR 2: FOREST



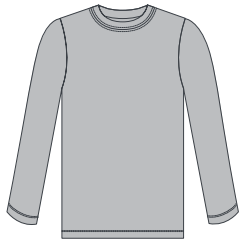
GUARD

(BB400)
400 SERIES
JERSEY
(BB604)
FULL CUT
SHORTS



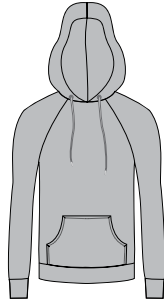
COLOR 1: RED
COLOR 2: NAVY
COLOR 3: WHITE

SUGGESTED ADD-ONS



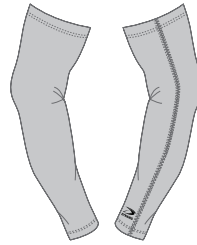
SHOOTER SHIRT

Performance fit shirt, available in short or long sleeve and crew or v-neck.



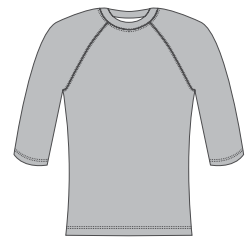
PULL OVER HOODIE

Fully lined hood. Raglan sleeves with cuffs. Pouch pocket. Available in light & medium weight fleece.



COMPRESSION SLEEVE

Bicep to wrist length. Made of light weight, breathable, moisture wicking fabric.



BASE LAYER

Made of light weight, breathable, moisture wicking fabric. Available in multiple sleeve lengths.





2019 SOCCER

INNOVATIVE CUTS FOCUSED ON AGILITY & SPEED



TOUCHLINE

(SC006)
RAGLAN
SOCCER
JERSEY

COLOR 1:
GOLD



COLOR 2:
NAVY



Our new Raglan Cut soccer jersey is available in a Crew or V-Neck finish. Can be ordered in any Dynamic fabric that suits your needs, is finished in a three-needle stitch for peak durability, and features a raglan sleeve for increased comfort.

Full cut shorts to match are offered in multiple standard inseam lengths and in the fabric of your choice, and have no exterior side seam to accommodate endless design options.



TOUCHLINE

(BB603)
7" FULL CUT
SHORTS

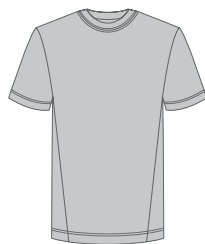
COLOR 1:
GOLD



COLOR 2:
NAVY



SELECT YOUR CUT



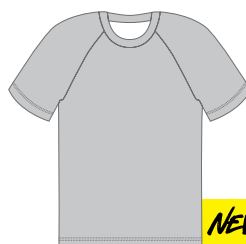
MEN'S CHAMPION FIT
(SC005)

- » Serged seam construction
- » Set in sleeves
- » Crew neck only, performance fit
- » Side panels; can be mesh fabric



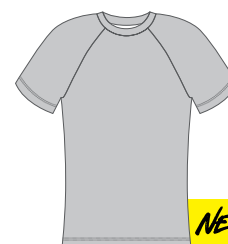
WOMEN'S CHAMPION FIT
(SC04W)

- » Serged seam construction
- » Set-in cap sleeves
- » Neck binding
- » V-neck only, performance fit



MEN'S RAGLAN SOCCER
(SC006)

- » Raglan sleeves
- » Crew neck, performance fit
- » Straight hemmed bottom
- » Serged seam construction



WOMEN'S RAGLAN SOCCER
(SC03W)

- » Raglan sleeves
- » Crew neck or v-neck
- » Straight hemmed bottom
- » Serged seam construction
- » Performance fit



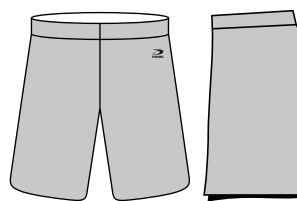
MEN'S CHAMPION FIT SHORTS (SC002)

- » 4 panel short
- » Curved side seam
- » 1.5" covered elastic with drawstring waist
- » 7" inseam



WOMEN'S CHAMPION FIT SHORTS (SC03W)

- » 4 panel Short
- » Curved side seam
- » 1.5" covered elastic with drawstring waist
- » 5" inseam with side slits



MEN'S FULL CUT SHORTS
(BB603)

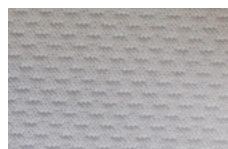
- » Ideal for large design
- » 2" covered elastic waistband with drawstring
- » 7" inseam length



WOMEN'S FULL CUT SHORTS (BB67W)

- » Ideal for large design
- » 2" covered elastic waistband with drawstring
- » 5" inseam length

RECOMMENDED FABRICS



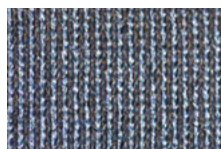
DYNA DRY

A flat-backed mock mesh, moisture wicking performance fabric.
(100% Polyester)



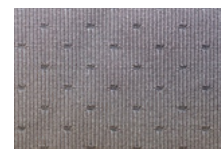
FLEX DRY

Light weight, breathable, two-way stretch with moisture management.
(90% Polyester / 10% Spandex)



DRY TEC

Light weight, micro fiber, pique moisture wicking fabric. Smooth, flat face, without texture. (100% Polyester)



AEROFIBER

Light weight, stretchable and breathable, open pin hole mesh. Moisture wicking, four-way stretch, performance fabric.
(90% Polyester / 10% Spandex)



**SWEEP**

(SC006)
RAGLAN SOCCER
JERSEY

(BB603)
7" FULL CUT
SHORTS

COLOR 1: WHITE
COLOR 2: BLACK
COLOR 3: 20% BLACK

**HEADER**

(SC006)
RAGLAN SOCCER
JERSEY

(BB603)
7" FULL CUT
SHORTS

COLOR 1: RED
COLOR 2: BLACK

**OFFSIDE**

(SC006)
RAGLAN SOCCER
JERSEY

(BB603)
7" FULL CUT
SHORTS

COLOR 1: VEGAS
COLOR 2: BLACK

**TOUCHLINE**

(SC006)
RAGLAN SOCCER
JERSEY

(BB603)
7" FULL CUT
SHORTS

COLOR 1: GOLD
COLOR 2: NAVY

**FULLBACK**

(SC005)
CHAMPION FIT
SOCCER JERSEY

(BB603)
7" FULL CUT
SHORTS

COLOR 1: ROYAL
COLOR 2: ORANGE
COLOR 3: WHITE

**NUTMEG**

(SC005)
CHAMPION FIT
SOCCER JERSEY

(BB603)
7" FULL CUT
SHORTS

COLOR 1: GOLD
COLOR 2: BLACK
COLOR 3: WHITE





FREE KICK

(SC005)
CHAMPION FIT
SOCCER JERSEY

(BB603)
7" FULL CUT
SHORTS



COLOR 1: KELLY
COLOR 2: FOREST
COLOR 3: HUNTER



SUPPORTER

(SC005)
CHAMPION FIT
SOCCER JERSEY

(BB603)
7" FULL CUT
SHORTS



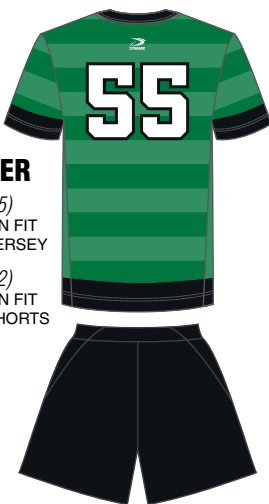
COLOR 1: NAVY
COLOR 2: WHITE
COLOR 3: RED



STRIKER

(SC005)
CHAMPION FIT
SOCCER JERSEY

(SC002)
CHAMPION FIT
SOCCER SHORTS



COLOR 1: FOREST
COLOR 2: 75% FOREST
COLOR 3: BLACK



BALKAN

(SC005)
CHAMPION FIT
SOCCER JERSEY

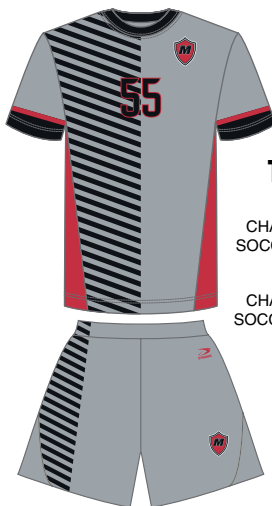
(SC002)
CHAMPION FIT
SOCCER SHORTS



COLOR 1: NAVY
COLOR 2: GOLD



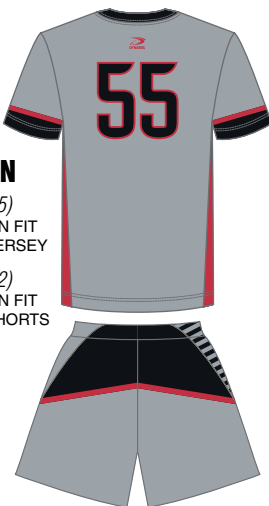
WHITE OVERLAY PATTERN



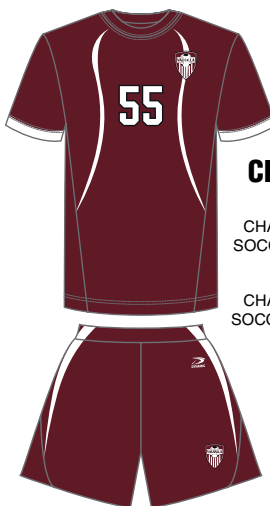
TURIN

(SC005)
CHAMPION FIT
SOCCER JERSEY

(SC002)
CHAMPION FIT
SOCCER SHORTS



COLOR 1: SILVER
COLOR 2: BLACK
COLOR 3: RED



CHELSEA

(SC005)
CHAMPION FIT
SOCCER JERSEY

(SC002)
CHAMPION FIT
SOCCER SHORTS



COLOR 1: MAROON
COLOR 2: WHITE



**BORNEO**

SC006)
RAGLAN SOCCER
JERSEY

(SC002)
CHAMPION FIT
SOCCER SHORTS

COLOR 1: ROYAL
COLOR 2: NAVY
COLOR 3: SILVER

**EURO**

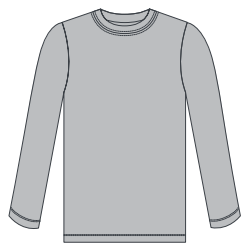
SC006)
RAGLAN SOCCER
JERSEY

(SC002)
CHAMPION FIT
SOCCER SHORTS

COLOR 1: SILVER
COLOR 2: BLACK

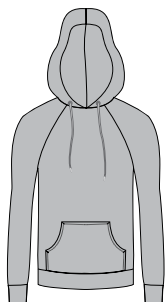


SUGGESTED ADD-ONS



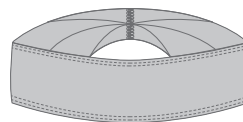
SHOOTER SHIRT

Performance fit shirt, available in short or long sleeve and crew or v-neck.



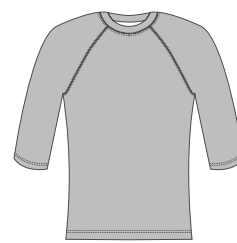
PULL OVER HOODIE

Fully lined hood. Raglan sleeves with cuffs. Pouch pocket. Available in light and medium weight fleece.



HEADBAND

2" height (women's), 4" height (men's). One size fits all. Made of light weight, breathable, moisture wicking fabric. Two fabric options available.



BASE LAYER

Made of breathable, light weight, moisture wicking fabric. Available in multiple sleeve lengths.





2019 MEN'S LAX

CRADLE, CUT AND CHECK WITH RELAXED FIT JERSEYS



TOP SHELF
(LX011)
COMPETITION
JERSEY

COLOR 1:
ROYAL



COLOR 2:
ORANGE



COLOR 3:
WHITE



From traditional sleeved uniforms to reversible tanks, Dynamic has it all. Whether you are perfecting a masterpiece from our predetermined catalog designs or putting a custom twist on your order, we will make sure you look sharp next time you take the field.

Our new Competition Jersey cut offers a relaxed fit to accommodate full range of motion, comes standard with a modified v-neck, set-in short sleeves, and a sewn-in shoulder yoke to promote increased breathability. Shorts to match your uniform top are available in 7", 9" or 11" inseams, and feature a drawstring to achieve the optimal fit.



TOP SHELF
(BB604)
FULL CUT
SHORTS

COLOR 1:
ROYAL



COLOR 2:
ORANGE



COLOR 3:
WHITE



REVERSIBLE UNIFORMS! Any design you see with this symbol can be purchased as a style on its own or made into a reversible color uniform.

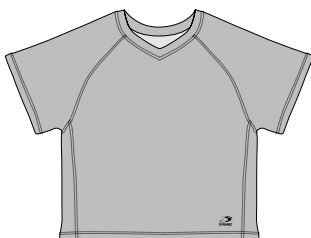
SELECT YOUR CUT



COMPETITION JERSEY

(LX011)

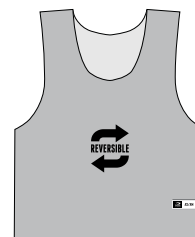
- » Set in sleeves with fusion neck
- » Back yoke
- » Serged seam construction



DESPARADO JERSEY

(LX014)

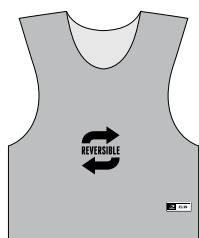
- » Raglan sleeves with v-neck
- » 3" sewn-in side panel (HFHS Legal)
- » Piping available upon request (not NFHS Legal)



NARROW SHOULDER REVERSIBLE TANK

(LX015)

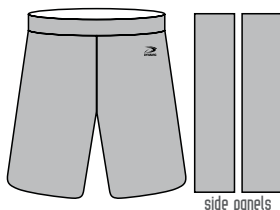
- » Two panels with scoop neck
- » Flatlock seam construction
- » Straight hemmed bottom
- » Wide armholes
- » Single or double ply reversible available



WIDE SHOULDER REVERSIBLE TANK

(LX015)

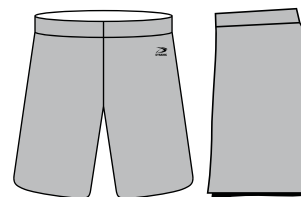
- » Two panels with scoop neck
- » Flatlock seam construction
- » Straight hemmed bottom
- » Wide armholes
- » Single or double ply reversible available



TRADITIONAL SHORTS

(LX061)

- » 4" side panels
- » 2" gripper elastic waistband with drawstring
- » 7", 9" and 11" inseam lengths available

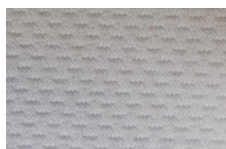


FULL CUT SHORTS

(BB604)

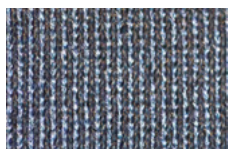
- » Ideal for large artwork
- » 2" covered elastic waistband with drawstring
- » 7", 9" and 11" inseam lengths available

RECOMMENDED FABRICS



DYNA DRY

A flat-backed mock mesh, moisture wicking performance fabric. (100% Polyester)



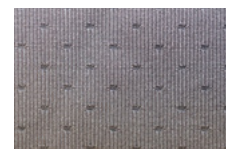
DRY TEC

Lightweight, micro fiber, pique moisture wicking fabric. Smooth, flat face, without texture. (100% Polyester)



DUAL WICK

Double knit, mesh look, mid weight, breathable, moisture wicking fabric. Suggested for single ply reversibles.



AEROFIBER

Lightweight, stretchable and breathable, open pin hole mesh. Moisture wicking, four-way stretch, performance fabric. (90% Polyester / 10% Spandex)



MEN'S LACROSSE

TEAM UNIFORMS 2019



**CRADLE**

(LX015)
REVERSIBLE
NARROW
SHOULDER
JERSEY

(BB604)
FULL CUT
SHORTS



COLOR 1: WHITE
COLOR 2: ROYAL
COLOR 3: FOREST

COLOR 1: ROYAL
COLOR 2: WHITE
COLOR 3: FOREST

**SILENCER**

(LX015)
REVERSIBLE
NARROW
SHOULDER
JERSEY

(LX061)
TRADITIONAL
SHORTS



COLOR 1: WHITE
COLOR 2: ORANGE
COLOR 3: TEAL

COLOR 1: TEAL
COLOR 2: WHITE
COLOR 3: ORANGE

**STEPPER**

(LX016)
REVERSIBLE WIDE
SHOULDER
JERSEY

(LX061)
TRADITIONAL
SHORTS



COLOR 1: HUNTER
COLOR 2: WHITE

COLOR 1: WHITE
COLOR 2: HUNTER

**SPECTRUM**

(LX016)
REVERSIBLE WIDE
SHOULDER
JERSEY

(LX061)
TRADITIONAL
SHORTS



COLOR 1: RED
COLOR 2: WHITE
COLOR 3: BLACK

COLOR 1: WHITE
COLOR 2: RED
COLOR 3: BLACK

**TOP SHELF**

(LX011)
COMPETITION
JERSEY

(BB604)
FULL CUT
SHORTS



COLOR 1: ROYAL
COLOR 2: ORANGE
COLOR 3: WHITE

**GILMAN**

(LX011)
COMPETITION
JERSEY

(BB604)
FULL CUT
SHORTS



COLOR 1: NAVY
COLOR 2: WHITE

BIG SHOW
(LX011)
COMPETITION JERSEY
(BB604)
FULL CUT SHORTS

COLOR 1: BLACK
COLOR 2: TONAL CAMO
COLOR 3: GOLD

TONAL CAMO COLORS:
80%, 65%, 30% BLACK

SONIC
(LX011)
COMPETITION JERSEY
(BB604)
FULL CUT SHORTS

COLOR 1: ROYAL
COLOR 2: ORANGE

RIP
(LX014)
DESPARADO JERSEY
(LX061)
TRADITIONAL SHORTS

COLOR 1: WHITE
COLOR 2: ORANGE
COLOR 3: BLACK
COLOR 4: 50% BLACK

TRANSITION
(LX014)
DESPARADO JERSEY
(LX061)
TRADITIONAL SHORTS

COLOR 1: RED
COLOR 2: SHATTER PATTERN
RED, BLACK, WHITE
75% BLACK

SLASH
(LX014)
DESPARADO JERSEY
(LX061)
TRADITIONAL SHORTS

COLOR 1: NAVY
COLOR 2: 80% NAVY
COLOR 3: NAVY GRADIENT

INTERFERENCE
(LX014)
DESPARADO JERSEY
(LX061)
TRADITIONAL SHORTS

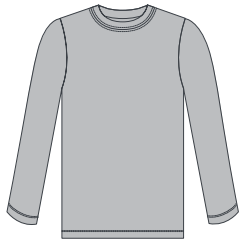
COLOR 1: HUNTER
COLOR 2: KELLY



MEN'S LACROSSE

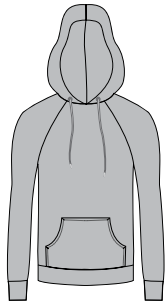
WWW.DYNAMICTEAMSPTS.COM 800.437.6223

SUGGESTED ADD-ONS



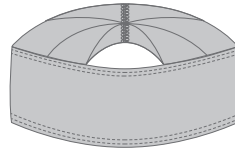
SHOOTER SHIRT

Performance fit shirt, available in short or long sleeve and crew or v-neck.



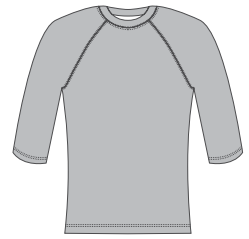
PULL OVER HOODIE

Fully lined hood. Raglan sleeves with cuffs. Pouch pocket. Available in light and medium weight fleece.



HEADBAND

4" height. One size fits all. Made of breathable light weight, moisture wicking fabric. Two fabric options available.



BASE LAYER

Made of breathable light weight, moisture wicking fabric. Available in multiple sleeve lengths.





2019 FIELD HOCKEY & LAX

IT'S CALLED OUR CHAMPION FIT FOR A REASON



UNDERCUT
(WL65W)
CHAMPION FIT
RACERBACK

COLOR 1:
ROYAL



COLOR 2:
SKY



COLOR 3:
NAVY



Our Champion Fit racerback is available in youth and adult sizing in whatever Dynamic fabric you desire, features a flared uniform body, a low-profile v-neck finish, sewn-in fixed-width side panels, sewn-in arm trim for additional customization, and sewn-in piping upon request.

Matching Champion Fit skirts or skorts feature a 2" elastic waistband and are fully customizable to meet your custom design desires.



UNDERCUT
(WL16W)
SKIRT WITH
SIDE PANEL

COLOR 1:
ROYAL



COLOR 2:
SKY



COLOR 3:
NAVY



REVERSIBLE UNIFORMS! Any design you see with this symbol can be purchased as a style on its own or made into a reversible color uniform.

SELECT YOUR CUT



CHAMPION FIT RACERBACK

(WL65W)

- » Racerback with armhole facings and v-neck
- » 3" sewn-in side panel (HFHS Legal)
- » Piping available upon request (not NFHS Legal)



TANK OR RACERBACK JERSEY

(SB58W / SB55W)

- » Crew neck & v-neck option available
- » Straight hemmed bottom
- » Single color binding option for armholes



RACERBACK REVERSIBLE TANK

(WL66W)

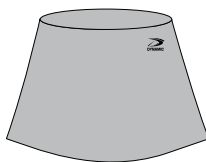
- » Two panels with round neck
- » Serged seam construction
- » Straight hemmed bottom
- » Single or double ply reversible available



CHAMPION FIT SKIRT

(WL14W)

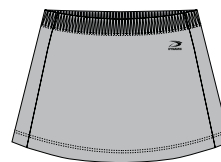
- » Skirt or skort – including compression shorts options available
- » Piping available upon request
- » 2" flat covered elastic waistband
- » Curved side seams



TWO PANEL SKIRT

(WL15W)

- » 2-panel skirt with straight side seams
- » 1" covered, gathered, elastic waistband

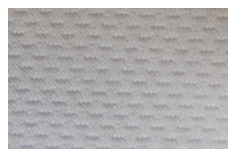


SKIRT WITH SIDE PANELS

(WL16W)

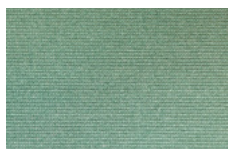
- » Skirt or skort– including compression shorts options available
- » 3" side panels
- » 1" covered, gathered, elastic waistband

RECOMMENDED FABRICS



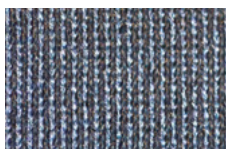
DYNA DRY

A flat-backed mock mesh, moisture wicking performance fabric. (100% Polyester)



FLEX DRY

Light weight, breathable, two-way stretch with moisture management. (90% Polyester / 10% Spandex)



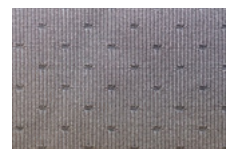
DRY TEC

Light weight, micro fiber, pique moisture wicking fabric. Smooth, flat face, without texture. (100% Polyester)



DUAL WICK

Double knit, mesh look, mid weight, breathable, moisture wicking fabric. Suggested for single ply reversibles.



AEROFIBER

Lightweight, stretchable and breathable, open pin hole mesh. Moisture wicking, four-way stretch, performance fabric. (90% Polyester / 10% Spandex)





EQUALIZER

(WL66W)
REVERSIBLE
RACERBACK
JERSEY

(WL16W)
SKIRT WITH
SIDE PANEL



COLOR 1: RED
COLOR 2: ARGYLE
COLOR 3: WHITE



ARGYLE COLORS:
RED, SILVER, BLACK,
WHITE

COLOR 1: WHITE
COLOR 2: ARGYLE
COLOR 3: BLACK



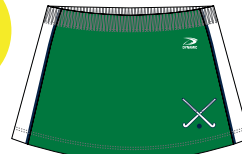
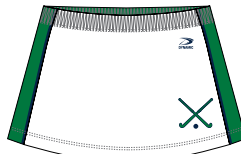
ARGYLE COLORS:
RED, SILVER, BLACK,
WHITE



PERFORMER

(WL66W)
REVERSIBLE
RACERBACK
JERSEY

(WL16W)
SKIRT WITH
SIDE PANEL



COLOR 1: WHITE
COLOR 2: FOREST
COLOR 3: NAVY



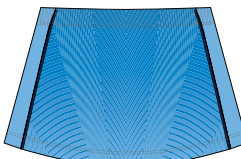
COLOR 1: FOREST
COLOR 2: WHITE
COLOR 3: NAVY



UNDERCUT

(WL65W)
CHAMPION FIT
RACERBACK

(WL16W)
SKIRT WITH
SIDE PANEL



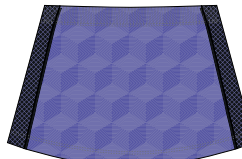
COLOR 1: ROYAL
COLOR 2: SKY
COLOR 3: NAVY



Flick

(WL65W)
CHAMPION FIT
RACERBACK

(WL16W)
SKIRT WITH
SIDE PANEL



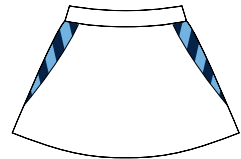
COLOR 1: PURPLE
COLOR 2: 75% PURPLE
COLOR 3: BLACK



SPLASH

(WL65W)
CHAMPION FIT
RACERBACK

(WL14W)
CHAMPION
FIT SKIRT



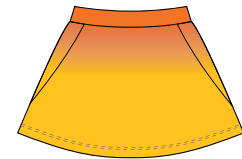
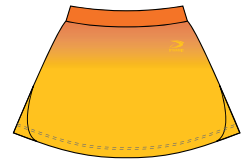
COLOR 1: WHITE
COLOR 2: NAVY
COLOR 3: SKY



TIDE

(WL65W)
CHAMPION FIT
RACERBACK

(WL14W)
CHAMPION
FIT SKIRT



COLOR 1: GOLD
COLOR 2: ORANGE
COLOR 3: ORANGE





INTERCHNAGE

(SB55W)
RACERBACK
JERSEY

(WL15W)
TWO PANEL
SKIRT



COLOR 1: GOLD
COLOR 2: PURPLE
COLOR 3: BLACK



RUSER

(SB58W)
TANK JERSEY

(WL14W)
TWO PANEL
SKIRT



COLOR 1: BLACK
COLOR 2: 75% PINK
COLOR 3: WHITE



TRAILER

(SB55W)
RACERBACK
JERSEY

(WL15W)
TWO PANEL
SKIRT



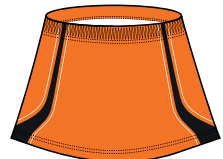
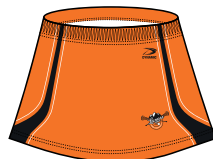
COLOR 1: WHITE
COLOR 2: ARGYLE
COLOR 3: BLACK
ARGYLE COLORS:
RED, BLACK, WHITE



BLADE

(SB58W)
TANK JERSEY

(WL15W)
TWO PANEL
SKIRT



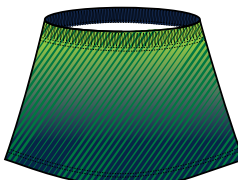
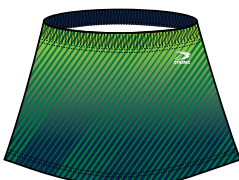
COLOR 1: ORANGE
COLOR 2: BLACK
COLOR 3: WHITE



SCOOP

(SB55W)
RACERBACK
JERSEY

(WL15W)
TWO PANEL
SKIRT



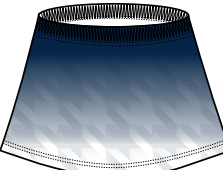
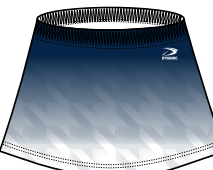
COLOR 1: NAVY
COLOR 2: LIME
COLOR 3: FOREST



DRIVE

(SB58W)
TANK JERSEY

(WL15W)
TWO PANEL
SKIRT



COLOR 1: WHITE
COLOR 2: NAVY
COLOR 3: 25% SILVER
COLOR 3 IS PATTERN
COLOR



WOMEN'S FIELD HOCKEY & LACROSSE

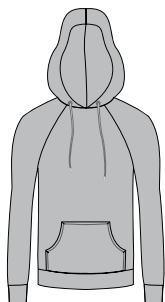
WWW.DYNAMICTEAMSPTS.COM 800.437.6223

SUGGESTED ADD-ONS



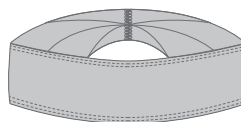
SHOOTER SHIRT

Performance fit shirt, available in short or long sleeve and crew or v-neck.



PULL OVER HOODIE

Fully lined hood. Raglan sleeves with cuffs. Pouch pocket. Available in light and medium weight fleece.



HEADBAND

2" height. One size fits all. Made of breathable, light weight, moisture wicking fabric. Two fabric options available.



LEGGINGS

Flat lock seam construction. 3" self fabric waist with 1/4" elastic. Also available in 3/4 length.






2019 MEN'S & WOMEN'S TRACK

MOISTURE WICKING FABRICS THAT ARE LIGHTER THAN AIR



DIAMOND
(BS531)
 FULL BUTTON
 RAGLAN
COLOR 1:
 BLACK

COLOR 2:
 RED

COLOR 3:
 WHITE


Available in men's, women's, and youth sizing, a multitude of lightweight, moisture wicking fabrics, and truly unlimited custom designs, Dynamic is watching your back and so will your opponents.

Our Champion Fit jersey tops display a sleek, racerback construction, are finished with a double-needle stitch to ensure quality and feature a top back yoke to accommodate dual fabric options.

All designs are constructed in the light weight, moisture-wicking fabric of your choice and are decorated to your custom specifications.

Men's, women's and youth Champion Fit shorts come equipped with a liner upon request, feature a full-flap side seam for increased range of motion and breathability, are available in your preferred Dynamic fabric, and encompass unlimited design capabilities.

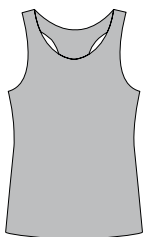


DIAMOND
(BS610)
 FULL LENGTH
 PANTS
COLOR 1:
 RED

COLOR 2:
 BLACK

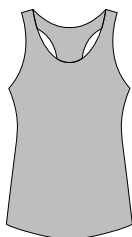
COLOR 3:
 BLACK


SELECT YOUR CUT



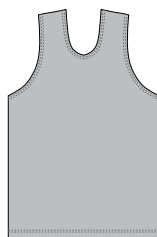
MEN'S CHAMPION FIT
(TR007)

- » Racerback, athletic fit
- » Back yoke; can be mesh fabric
- » Flatlock seam construction
- » Curved hemmed bottom



WOMEN'S CHAMPION FIT
(TR08W)

- » Racerback, athletic fit
- » Back yoke; can be mesh fabric
- » Flatlock seam construction
- » Curved hemmed bottom



MEN'S TRADITIONAL
(TR056)

- » Tank cut, relaxed fit
- » Serged seam construction
- » Straight hemmed bottom



WOMEN'S TRADITIONAL
(TR09W)

- » Tank cut, relaxed fit
- » Serged seam construction
- » Straight hemmed bottom



MEN'S CHAMPION FIT SHORTS (TR010)

- » Overlap at side seams for increased mobility
- » Covered elastic drawstring waist
- » 3.5" inseam
- » Liner included



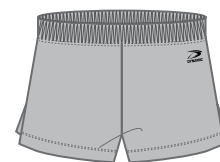
WOMEN'S CHAMPION FIT SHORTS (TR09W)

- » Overlap at side seams for increased mobility
- » Covered elastic drawstring waist
- » 3.5" inseam
- » Liner included



MEN'S TRADITIONAL SHORTS (TR057)

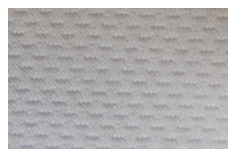
- » 4-panel short
- » Covered elastic drawstring waist
- » 3.5" inseam
- » Liner included
- » Slits at side seams



WOMEN'S TRADITIONAL SHORTS (TR57W)

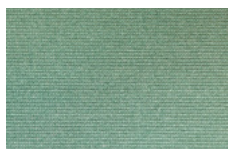
- » 4-panel short
- » Covered elastic drawstring waist
- » 3.5" inseam
- » Liner included
- » Slits at side seams

RECOMMENDED FABRICS



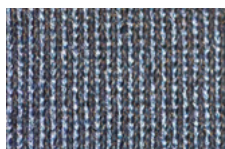
DYNA DRY

A flat-backed mock mesh, moisture wicking performance fabric.
(100% Polyester)



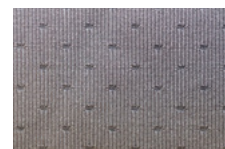
FLEX DRY

Light weight, breathable, two-way stretch with moisture management.
(90% Polyester / 10% Spandex)



DRY TEC


Lightweight, micro fiber, pique moisture wicking fabric. Smooth, flat face, without texture. (100% Polyester)



AEROFIBER


Lightweight, stretchable and breathable, open pin hole mesh. Moisture wicking, four-way stretch, performance fabric.
(90% Polyester / 10% Spandex)





FINISHER
 (TR007/TR08W) CHAMPION FIT JERSEY
 (TR010/TR09W) CHAMPION FIT SHORTS

COLOR 1: RED
COLOR 2: CARDINAL



INTERVAL
 (TR007/TR08W) CHAMPION FIT JERSEY
 (TR010/TR09W) CHAMPION FIT SHORTS

COLOR 1: WHITE
COLOR 3: RED
COLOR 2: BLACK



SPLITS
 (TR007/TR08W) CHAMPION FIT JERSEY
 (TR010/TR09W) CHAMPION FIT SHORTS

COLOR 1: HUNTER
COLOR 2: LIME



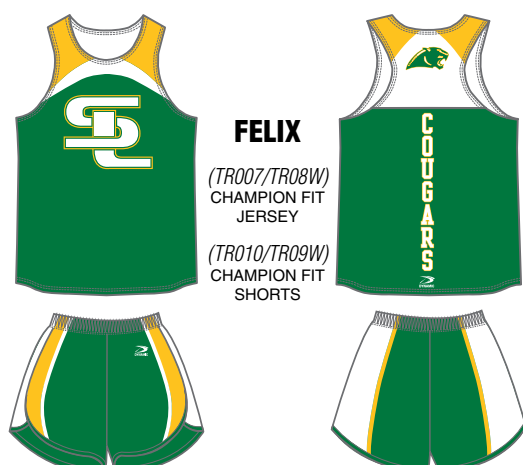
OWENS
 (TR007/TR08W) CHAMPION FIT JERSEY
 (TR010/TR09W) CHAMPION FIT SHORTS

COLOR 1: NAVY
COLOR 2: WHITE
COLOR 3: RED TO WHITE
COLOR 4: WHITE TO RED TO WHITE



LEWIS
 (TR007/TR08W) CHAMPION FIT JERSEY
 (TR010/TR09W) CHAMPION FIT SHORTS

COLOR 1: ROYAL
COLOR 2: ORANGE
COLOR 2: WHITE



FELIX
 (TR007/TR08W) CHAMPION FIT JERSEY
 (TR010/TR09W) CHAMPION FIT SHORTS

COLOR 1: FOREST
COLOR 2: NAVY
COLOR 3: WHITE



STAMINA
 (TR056/TR056W)
 TRADITIONAL FIT
 JERSEY
 (TR057/TR57W)
 TRADITIONAL FIT
 JERSEY

COLOR 1: FOREST
COLOR 2: 75% FOREST
COLOR 2: HUNTER



PACE
 (TR056/TR056W)
 TRADITIONAL FIT
 JERSEY
 (TR057/TR57W)
 TRADITIONAL FIT
 JERSEY

COLOR 1: BLACK
COLOR 2: 75% BLACK
COLOR 2: RED



STRIDE
 (TR056/TR056W)
 TRADITIONAL FIT
 JERSEY
 (TR057/TR57W)
 TRADITIONAL FIT
 SHORTS

COLOR 1: CARDINAL
COLOR 2: NAVY



LOCKPORT
 (TR056/TR056W)
 TRADITIONAL FIT
 JERSEY
 (TR057/TR57W)
 TRADITIONAL FIT
 JERSEY

COLOR 1: GOLD
COLOR 2: BLACK



ROAD RUNNER
 (TR056/TR056W)
 TRADITIONAL FIT
 JERSEY
 (TR057/TR57W)
 TRADITIONAL FIT
 SHORTS

COLOR 1: NAVY
COLOR 2: 65% NAVY



TRINITY
 (TR056/TR056W)
 TRADITIONAL FIT
 JERSEY
 (TR057/TR57W)
 TRADITIONAL FIT
 SHORTS

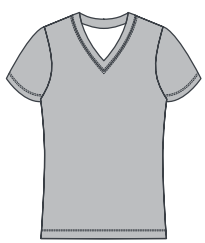
COLOR 1: WHITE
COLOR 2: RED



TRACK/CROSS COUNTRY

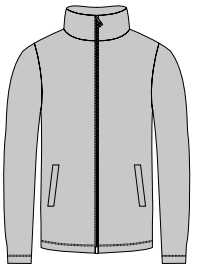
WWW.DYNAMICTEAMSPORTS.COM 800.437.6223

SUGGESTED ADD-ONS



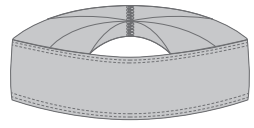
SHOOTER SHIRT

Performance fit shirt, available in short or long sleeve and crew or v-neck.



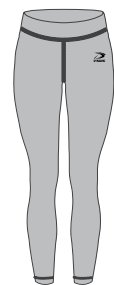
WARM UP JACKET

Full center front zipper. Fully faced collar. Set in sleeves with welt zipper pockets. Available in both men's and women's cuts.



HEADBAND

2" height (women's), 4" height (men's). One size fits all. Made of light weight, breathable moisture wicking fabric. Two fabric options available.



LEGGINGS

Flat lock seam construction. 3" self fabric waist with 1/4" elastic. Also available in 3/4 length. Men's compression pants also available.



3

2019 MEN'S VOLLEYBALL

SPIKE THE COMPETITION IN OUR SLEEVELESS THROWBACK



BLOCK
(BS531)
SLEEVELESS
THROWBACK

COLOR 1:
NAVY



COLOR 2:
RED



COLOR 3:
WHITE



Dynamic's men's volleyball products boast unlimited custom designs and an array of top-notch, light weight fabric options to keep you living above the net at match point.

Jersey tops available in sleeveless, short sleeve, and long sleeve options. All three sleeve options are accompanied by the option of crew or v-neck finish, are constructed in a fabric of your choice and are designed using unbound custom capabilities.

Shorts to match available in multiple inseam lengths, with or without sewn-in side panels, come standard with a draw-string for the perfect fit, and offer the option to add pockets.



BLOCK
(BS610)
7" FULL CUT
SHORTS

COLOR 1:
NAVY



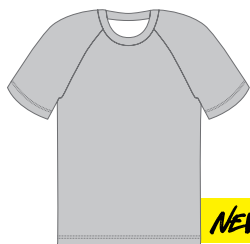
COLOR 2:
RED



COLOR 3:
WHITE



SELECT YOUR CUT



NEW CUT

MEN'S RAGLAN VOLLEYBALL

(VB175)

- » Raglan sleeves
- » Crew neck, performance fit
- » Straight hemmed bottom
- » Serged seam construction

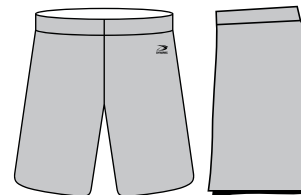


NEW CUT

MEN'S SLEEVELESS RAGLAN VOLLEYBALL

(SC006)

- » Raglan sleeves
- » Crew neck, performance fit
- » Straight hemmed bottom
- » Serged seam construction



MEN'S FULL CUT SHORTS

(BB603)

- » Ideal for large design
- » 2" covered elastic waistband with drawstring
- » 7" inseam length

RECOMMENDED FABRICS



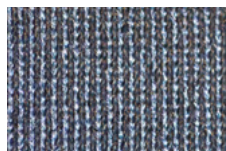
DYNA DRY

A flat-backed mock mesh, moisture wicking performance fabric.
(100% Polyester)



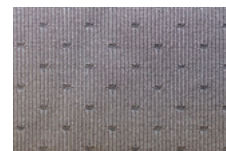
FLEX DRY

Light weight, breathable, two-way stretch with moisture management.
(90% Polyester / 10% Spandex)



DRY TEC

Lightweight, micro fiber, pique moisture wicking fabric. Smooth, flat face, without texture.
(100% Polyester)



AEROFIBER

Lightweight, stretchable and breathable, open pin hole mesh. Moisture wicking, four-way stretch, performance fabric.
(90% Polyester / 10% Spandex)







DIG
(VB175)
RAGLAN JERSEY
(BB603)
7" FULL CUT SHORTS

COLOR 1: ORANGE
COLOR 2: BLACK



SPIKE
(VB175)
RAGLAN JERSEY
(BB603)
7" FULL CUT SHORTS

COLOR 1: NAVY
COLOR 2: ROYAL
COLOR 3: GOLD



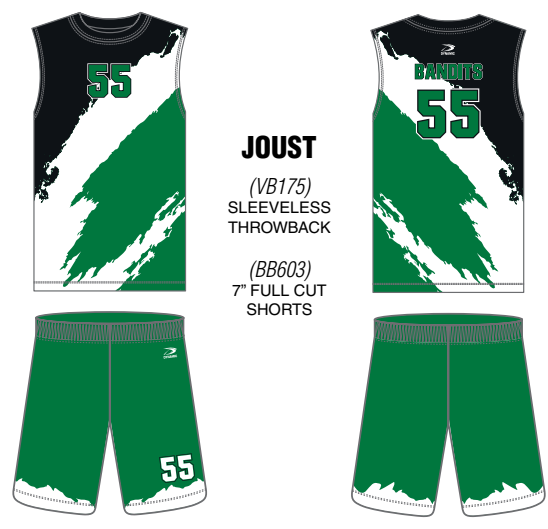
RALLY
(VB175)
RAGLAN JERSEY
(BB603)
7" FULL CUT SHORTS

COLOR 1: WHITE
COLOR 2: BLACK
COLOR 3: 75% BLACK
COLOR 4: 50% BLACK



SETTER
(VB175)
SLEEVELESS THROWBACK
(BB603)
7" FULL CUT SHORTS

COLOR 1: ROYAL
COLOR 2: NAVY
COLOR 3: SILVER



JOUST
(VB175)
SLEEVELESS THROWBACK
(BB603)
7" FULL CUT SHORTS

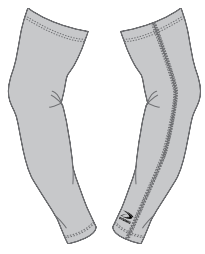
COLOR 1: FOREST
COLOR 2: WHITE
COLOR 3: BLACK



BLOCK
(VB175)
SLEEVELESS THROWBACK
(BB603)
7" FULL CUT SHORTS

COLOR 1: NAVY
COLOR 2: RED
COLOR 3: WHITE

SUGGESTED ADD-ONS



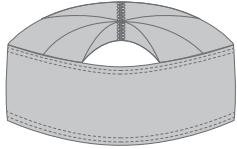
COMPRESSION SLEEVE

Bicep to wrist length. Made of light weight, breathable, moisture wicking fabric.



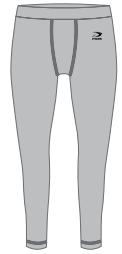
1/4 ZIP PULLOVER

6" center front zipper. Fully faced collar. Set in sleeves.



HEADBAND

4" height. One size fits all. Made of breathable, light weight, moisture wicking fabric. Two fabric options available.



MEN'S 3/4 COMPRESSION

Flat lock seam construction. 1.5" exposed elastic waistband. Center front gusset. Also available in full length.





2019 WOMEN'S VOLLEYBALL

SERVING UP THE PERFECT BLEND OF STYLE & PERFORMANCE

BUMP
(VB20W)
PREMIER
JERSEY

COLOR 1:
HUNTER



COLOR 2:
85% HUNTER



COLOR 3:
LIME



COLOR 4:
WHITE



Dynamic is serving up the perfect blend of style and performance with our revamped Women's Volleyball selection – can you dig it?

Our new Premiere Cut Volleyball jerseys are available in Youth and Adult sizing to accommodate volleyball players of all ages. To further ensure this garment is exactly what had in mind when thinking of a new custom volleyball top, our Premiere Cut is available in both V or Crew neck options and can be ordered as a short sleeve or long sleeve top.

The athletic fit of this garment is an even mix of form fitting and functional. By choosing our Premiere Cut volleyball top, you will eliminate the restriction of a compression top while avoiding the cumbersome and unnecessary bagginess of a traditional tee shirt cut, leaving you with a sleek and game-ready look when you step on the court.



BUMP
(VB21W)
COMPRESSION
SHORTS - 2.5"

COLOR 1:
HUNTER



COLOR 2:
85% HUNTER



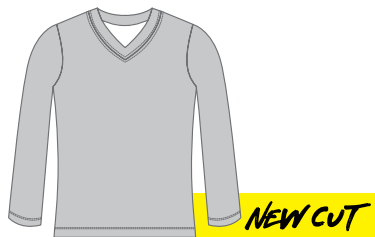
COLOR 3:
LIME



COLOR 4:
WHITE



SELECT YOUR CUT



PREMIER JERSEY (VB20W)

- » Set in sleeves with athletic fit
- » Crew neck or v-neck option
- » Flatlock seam construction



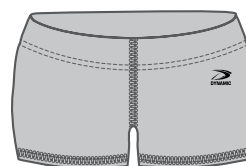
700 SERIES LONG SLEEVE (VB71W)

- » Raglan sleeves with athletic fit
- » 3" side panel can be mesh fabric
- » Flatlock seam construction



700 SERIES SHORT SLEEVE (VB70W)

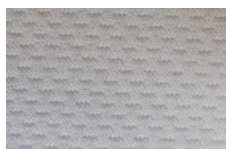
- » Raglan sleeves with athletic fit
- » 3" side panel can be mesh fabric
- » Flatlock seam construction



COMPRESSION SHORT (VB21W)

- » Available in 2.5" or 4" inseam
- » 3" self fabric waist with 1/4" elastic, gusset
- » Only available in stretch tec fabric

RECOMMENDED FABRICS



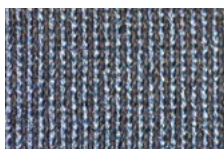
DYNA DRY

A flat-backed mock mesh, moisture wicking performance fabric.
(100% Polyester)



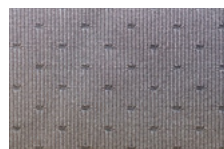
FLEX DRY

Light weight, breathable, two-way stretch with moisture management.
(90% Polyester / 10% Spandex)



DRY TEC

Light weight, micro fiber, pique moisture wicking fabric. Smooth, flat face, without texture.
(100% Polyester)



AEROFIBER

Light weight, stretchable and breathable, open pin hole mesh. Moisture wicking, four-way stretch, performance fabric.
(90% Polyester / 10% Spandex)



STRETCH TEC

Midweight, shiny, two way stretch with high retention and compression.
(91% Polyester / 9% Spandex)





BUMP

(VB20W)
PREMIER
JERSEY
(VB21W)
COMPRESSION
SHORTS - 2.5"

COLOR 1: HUNTER
COLOR 2: 85% HUNTER
COLOR 3: LIME
COLOR 4: WHITE



**POWER
ALLEY**

(VB20W)
PREMIER
JERSEY
(VB21W)
COMPRESSION
SHORTS - 2.5"

COLOR 1: ROYAL
COLOR 2: NAVY



BASILINE

(VB20W)
PREMIER
JERSEY
(VB21W)
COMPRESSION
SHORTS - 2.5"

COLOR 1: RED
COLOR 2: NAVY
COLOR 3: WHITE

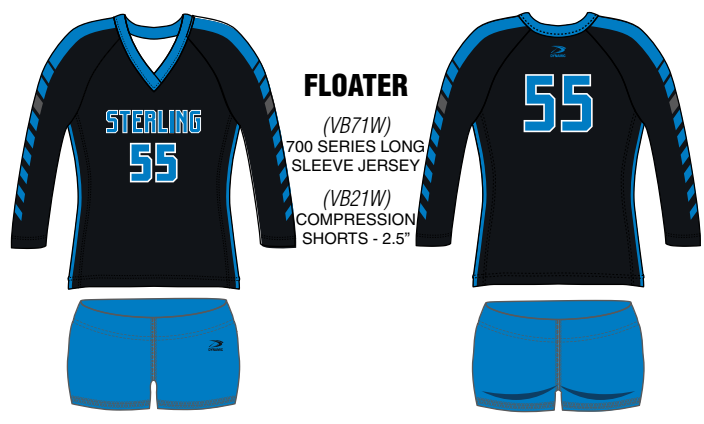


MINTONETTE

(VB20W)
PREMIER
JERSEY
(VB21W)
COMPRESSION
SHORTS - 2.5"

COLOR 1: BLACK
COLOR 2: BLACK FADE
COLOR 3: 75% BLACK



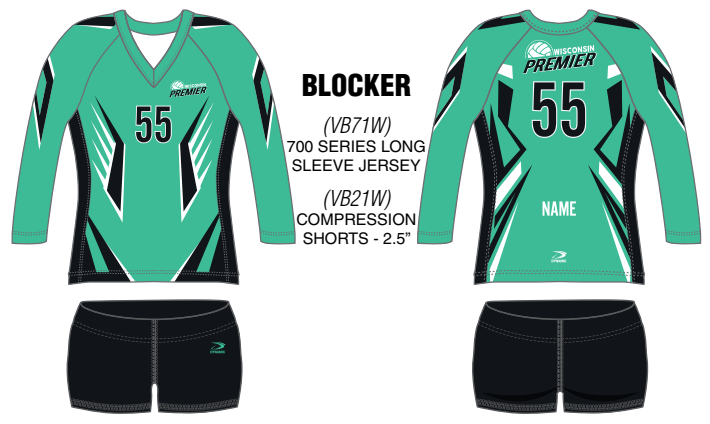


FLOATER

(VB71W)
700 SERIES LONG SLEEVE JERSEY

(VB21W)
COMPRESSION SHORTS - 2.5"

COLOR 1: BLACK
COLOR 2: ROYAL
COLOR 3: 75% BLACK

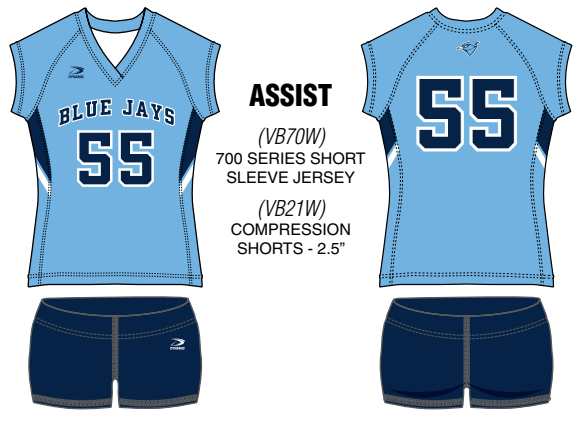


BLOCKER

(VB71W)
700 SERIES LONG SLEEVE JERSEY

(VB21W)
COMPRESSION SHORTS - 2.5"

COLOR 1: TEAL
COLOR 2: BLACK
COLOR 3: WHITE



ASSIST

(VB70W)
700 SERIES SHORT SLEEVE JERSEY

(VB21W)
COMPRESSION SHORTS - 2.5"

COLOR 1: SKY
COLOR 2: NAVY
COLOR 3: WHITE



NET

(VB70W)
700 SERIES SHORT SLEEVE JERSEY

(VB21W)
COMPRESSION SHORTS - 2.5"

COLOR 1: PURPLE
COLOR 2: GOLD
COLOR 3: WHITE



DOUBLE

(VB70W)
700 SERIES SHORT SLEEVE JERSEY

(VB21W)
COMPRESSION SHORTS - 2.5"

COLOR 1: PINK
COLOR 2: NAVY
COLOR 3: WHITE



SET ATTACK

(VB70W)
700 SERIES SHORT SLEEVE JERSEY

(VB21W)
COMPRESSION SHORTS - 2.5"

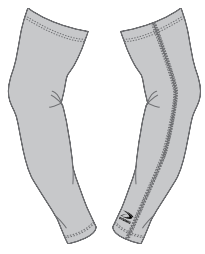
COLOR 1: BLACK
COLOR 2: RED
COLOR 3: WHITE



WOMEN'S VOLLEYBALL

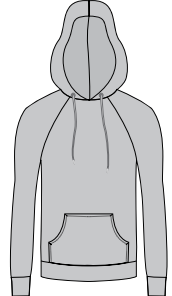
WWW.DYNAMICSPORTS.COM 800.437.6223

SUGGESTED ADD-ONS



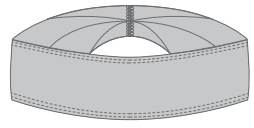
COMPRESSION SLEEVE

Bicep to wrist length. Made of light weight, breathable, moisture wicking fabric.



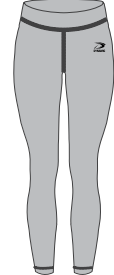
PULL OVER HOODIE

Fully lined hood. Raglan Sleeves with cuffs. Pouch pocket. Available in LLight and medium weight fleece.



HEADBAND

2" height. One size fits all. Made of light weight, breathable, moisture wicking fabric. Two fabric options available.



LEGGINGS

Flat lock seam construction. 3" self fabric waist with 1/4" elastic. Also available in 3/4 length.





2019 WRESTLING

HEAR YOUR NEXT 3-COUNT IN OUR UNIQUE 3-PIECE WRESTLING KIT



WHIZZER
(WR302)
FIGHT SHIRT

- COLOR 1:**
BLACK
- COLOR 2:**
CARDINAL
- COLOR 3:**
BLACK
- COLOR 4:**
WHITE

Our Compression Top, Wrestling Shorts and Compression Shorts are just what you need to keep your team up to date with the newest trend in wrestling.

Our Compression Wrestling Top features a 3" drop tail to accommodate NFHS requirements, is constructed using a raglan sleeve for optimal comfort, offers a low-profile crew neck finish, and can be designed to your custom specifications.

Dynamic Wrestling Shorts are constructed using the fabric of your liking, are offered in a full cut with no side seam to accommodate a full wrap design, feature a v-notch bottom hem to promote a full range of motion, come standard with a drawstring to ensure proper placement, and are built to last.



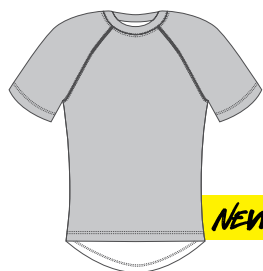
WHIZZER
(WR303)
FIGHT SHORT

- COLOR 1:**
BLACK
- COLOR 2:**
CARDINAL
- COLOR 3:**
BLACK
- COLOR 4:**
WHITE

Our Compression Shorts are available in a variety of inseam lengths to fit your needs, are constructed using our ever-durable StretchTec fabric, and feature a customizable waistband for additional styling.



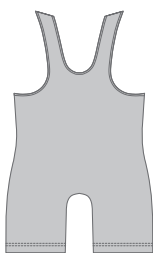
SELECT YOUR CUT



MEN'S FIGHT SHIRT

(WR302)

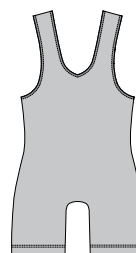
- » Compression fit
- » Crew neck only
- » Raglan sleeves
- » Scoop back tail
- » Flatlock seam construction



MEN'S CHAMPION FIT SINGLET

(WR300)

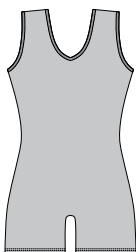
- » Racerback cut
- » Compression fit
- » Elastic gripper leg band
- » Flatlock seam construction
- » Neck and armhole binding
- » Side seam offset to back accommodates oblique logo placement



MEN'S TRADITIONAL FIT SINGLET

(WR301)

- » Compression fit
- » Elastic gripper leg band
- » Straight hemmed bottom
- » Flatlock seam construction
- » Neck and armhole binding



WOMEN'S TRADITIONAL FIT SINGLET

(WR30W)

- » Compression fit
- » Elastic gripper leg band
- » Straight hemmed bottom
- » Flatlock seam construction
- » Neck and armhole binding



MEN'S FIGHT SHORT

(VB175)

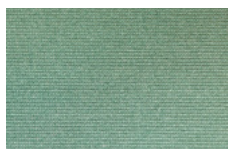
- » Full panel shorts – ideal for large design
- » 2.5" covered elastic inner waistband
- » Center front placket
- » Serged seam construction
- » Side slits at hem

RECOMMENDED FABRICS



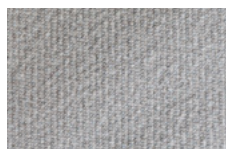
STRETCH TEC

Midweight, shiny, two way stretch with high-retention & compression. (91% Polyester / 9% Spandex)



FLEX DRY

Breathable, light weight two-way stretch with moisture management. (90% Polyester / 10% Spandex)



CONTACT SHELL

Light weight, minimal stretch, moisture wicking, cool, dry shell (100% polyester)



FORCE FIBER

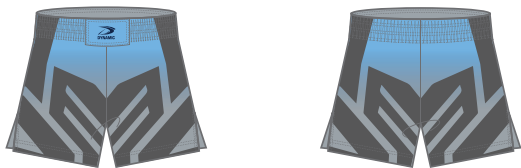
Midweight, matte, smooth hand, high-retention & compression, and cooling. (90% Polyester, 10% Spandex)





FREESTYLE

(WR302)
FIGHT SHIRT
(WR303)
FIGHT SHORT



COLOR 1: SILVER
COLOR 2: SKY
COLOR 3: 75% BLACK



GRIP

(WR302)
FIGHT SHIRT
(WR303)
FIGHT SHORT

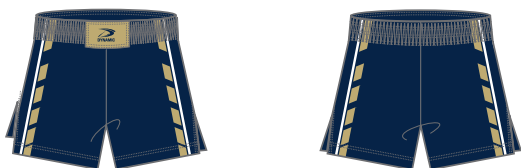


COLOR 1: NAVY
COLOR 2: TONAL NAVY
COLOR 3: GOLD
COLOR 4: WHITE



TAKEDOWN

(WR302)
FIGHT SHIRT
(WR303)
FIGHT SHORT



COLOR 1: NAVY
COLOR 2: VEGAS
COLOR 3: WHITE



WHIZZER

(WR302)
FIGHT SHIRT
(WR303)
FIGHT SHORT



COLOR 1: RED
COLOR 2: CARDINAL
COLOR 3: BLACK
COLOR 4: WHITE



BOUT

(WR300)
CHAMPION FIT
SINGLET

COLOR 1: RED
COLOR 2: NAVY
COLOR 3: WHITE



**HAMMER
LOCK**

(WR300)
CHAMPION FIT
SINGLET

COLOR 1: BLACK
COLOR 2: RED
COLOR 3: WHITE





AGGRESSOR
(WR300)
CHAMPION FIT
SINGLET

COLOR 1: GOLD
COLOR 2: ROYAL
COLOR 3: WHITE



RAPTOR
(WR300)
CHAMPION FIT
SINGLET

COLOR 1: ORANGE
COLOR 2: BLACK
COLOR 3: WHITE



HURRICANE
(WR300)
CHAMPION FIT
SINGLET

COLOR 1: NAVY
COLOR 2: LIME
COLOR 3: WHITE



PIN
(WR301)
TRADITIONAL FIT
SINGLET

COLOR 1: NAVY
COLOR 2: VEGAS
COLOR 3: WHITE
COLOR 4: SILVER



HEADLOCK
(WR301)
TRADITIONAL FIT
SINGLET

COLOR 1: BLACK
COLOR 2: RED
COLOR 3: WHITE

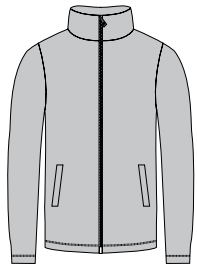


ELIMINATOR
(WR301)
TRADITIONAL FIT
SINGLET

COLOR 1: NAVY
COLOR 2: VEGAS

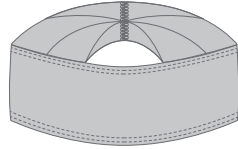


SUGGESTED ADD-ONS



WARM UP JACKET

Full center front zipper. Fully faced collar. Set in sleeves with welt zipper pockets. Available in both Men's and Women's cuts.



HEADBAND

4" height. One size fits all. Made of breathable, light weight, moisture wicking fabric. Two fabric options available.



COMPRESSION SHORTS

Flat lock seam construction. 1.5" exposed elastic waistband. Center front gusset.



MEN'S COMPRESSION PANTS

Flat lock seam construction. 1.5" exposed elastic waistband. Center front gusset. Also available in 3/4 length.





2019 ICE HOCKEY

STAND OUT ON THE ICE WITH CUSTOM CAMO DESIGNS & MORE



DANGLE
(HK702)
TRADITIONAL
LACE NECK

COLOR 1:
CAMO


CAMO COLORS:
NAVY, ROYAL,
80% NAVY

COLOR 2:
NAVY



COLOR 3:
WHITE



Matching socks and pant shells available in sizing to accommodate hockey players of all ages. Socks come standard with elasticized top and bottom hem accompanied by a sewn in velcro patch to ensure consistent placement.

Our hockey jerseys are offered in a variety of premium fabrics, are decorated with unlimited custom capabilities and are available in lace neck or v-neck finish. Two ply shoulder finish comes standard, double elbows are available upon request for additional durability.



DANGLE
(HK740)
ICE HOCKEY
SOCKS

COLOR 1:
CAMO


CAMO COLORS:
NAVY, ROYAL,
80% NAVY

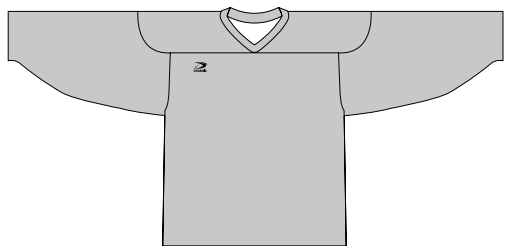
COLOR 2:
NAVY



COLOR 3:
WHITE



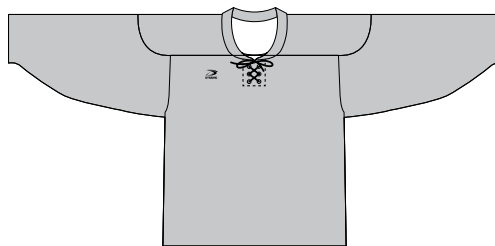
SELECT YOUR CUT



TRADITIONAL V-NECK

(HK701)

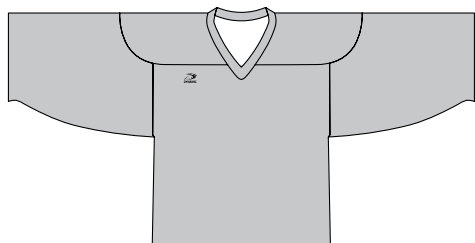
- » V-neck with double layer reinforced shoulder yoke
- » Serged seam construction



TRADITIONAL LACE NECK

(HK702)

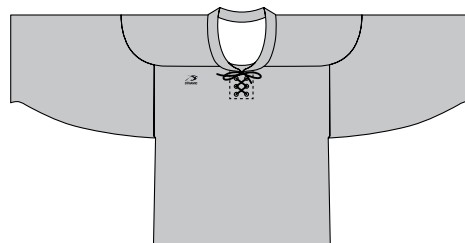
- » Lace neck with double layer reinforced shoulder yoke
- » Serged seam construction



GOALIE V-NECK

(HK703)

- » V-neck with double layer reinforced shoulder yoke
- » Serged seam construction
- » Body length shortened
- » Increased sleeve width

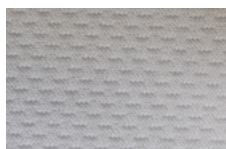


GOALIE LACE NECK

(HK704)

- » Lace neck with double layer reinforced shoulder yoke
- » Serged seam construction
- » Body length shortened
- » Increased sleeve width

RECOMMENDED FABRICS



DYNA DRY

A flat-backed mock mesh, moisture wicking performance fabric.

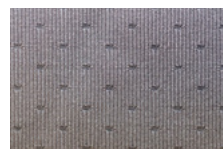
(100% Polyester)



AIR MESH

Heavy weight, technical track knit mesh, classic ice hockey fabric, durable strong.

(100% Polyester)



AEROFIBER

Light weight, stretchable and breathable, open pin hole mesh. Moisture wicking, four-way stretch, performance fabric.

(90% Polyester / 10% Spandex)





ICING

(HK702)
TRADITIONAL
LACE NECK



COLOR 1: RED
COLOR 2: NAVY
COLOR 3: WHITE



CROSS CHECK

(HK702)
TRADITIONAL
LACE NECK



COLOR 1: WHITE
COLOR 2: BLACK
COLOR 3: RED



FACEOFF

(HK702)
TRADITIONAL
LACE NECK



COLOR 1: SILVER
COLOR 2: BLACK



DANGLE

(HK702)
TRADITIONAL
LACE NECK



COLOR 1: CAMO
COLOR 2: NAVY
COLOR 3: WHITE

CAMO COLORS:
NAVY, ROYAL,
80% NAVY



BLUELINER
(HK701)
TRADITIONAL
V-NECK



COLOR 1: BLACK
COLOR 2: ORANGE
COLOR 3: WHITE



WINGER
(HK702)
TRADITIONAL
LACE NECK



COLOR 1: 20% VEGAS
COLOR 2: RED
COLOR 3: VEGAS



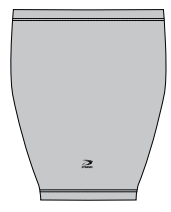
DASHER
(HK701)
TRADITIONAL
V-NECK



COLOR 1: RED
COLOR 2: NAVY
COLOR 3: WHITE



SUGGESTED ADD-ONS



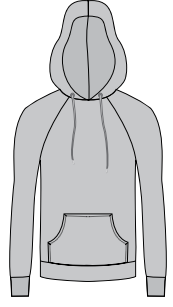
ICE HOCKEY SOCKS

1" covered elastic at top edge. Velcro at center front and back top edge.
Suggested fabric: Air Mesh



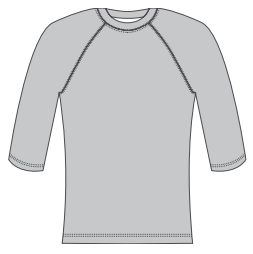
SUBLIMATED HOCKEY SHELL

Fully sublimated shell with ribbed gusset. Center front buckle and built in belt. Designed to go over pant.



PULL OVER HOODIE

Fully lined hood. Raglan sleeves with cuffs. Pouch pocket. Available in light and medium weight fleece.



BASE LAYER

Made of breathable, light weight, moisture wicking fabric. Available in multiple sleeve lengths.





WWW.DYNAMICTEAMSPORTS.COM

2019 FANWEAR



WOMEN'S PULLOVER HOODIE (X0206)

Fully lined hood. Raglan Sleeves with cuffs. Pouch pocket. Available in light and medium weight fleece.



MEN'S PULLOVER HOODIE (XB110)

Fully lined hood. Raglan sleeves with cuffs. Pouch pocket. Available in light and medium weight fleece.



WOMEN'S ZIP UP HOODIE (X0208)

Full center front zipper. Fully lined hood. Raglan sleeves with cuffs. Pouch pockets. Available in light and medium weight fleece.



MEN'S ZIP UP HOODIE (X0201)

Full center front zipper. Fully lined hood. Raglan sleeves with cuffs. Pouch pockets. Available in light and medium weight fleece.



WOMEN'S WARM UP JACKET (X0209)

Full center front zipper. Fully faced collar. Raglan sleeves, side panels and cuffs with thumb holes. Welt zipper pockets.



MEN'S WARM UP JACKET (X0202)

Full center front zipper. Fully faced collar. Set in sleeves with welt zipper pockets.


POLO (XT813 / XT814)

Performance fit. 3 button placket with a fully faced collar. Set in sleeves. Available in both men's and women's cuts.


1/4 ZIP JACKETS (X0204)

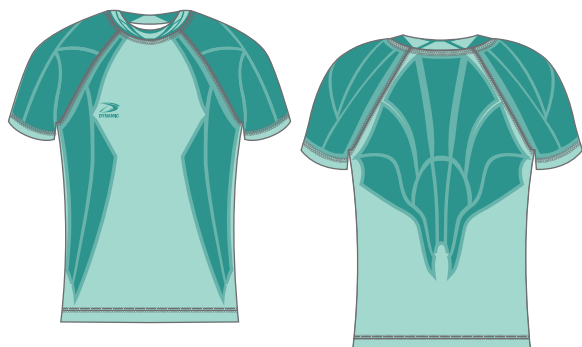
6" center front zipper. Fully faced collar. Set in sleeves.


PERFORMANCE T-SHIRT (XT801)

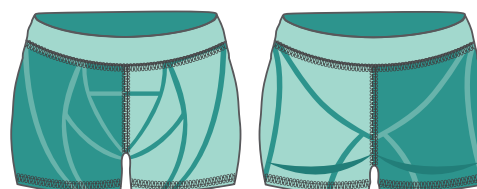
Performance t-shirt, available in short or long sleeve and crew or v-neck. Available in both men's and women's cuts.


FULL CUT SHORTS (BB604)

Ideal for large artwork. Shorts have a 2" covered elastic waistband with drawstring. 7", 9" and 11" inseam lengths available.


WOMEN'S COMPRESSION (XT811)

Flat lock seam construction. Crew neck. Made of light weight, breathable, moisture wicking fabric. Available in multiple sleeve lengths.


MEN'S COMPRESSION SHORTS (VB21W)

These compression shorts are available in 2.5" or 4" inseam. 3" self fabric waist with 1/4" elastic, gusset. Only available in stretch tec fabric.




MEN'S COMPRESSION TOP (XT809)

Flat lock seam construction. Crew neck. Made of light weight, breathable, moisture wicking fabric. Available in multiple sleeve lengths.


MEN'S COMPRESSION PANTS (XB105)

Flat lock seam construction. 1.5" exposed elastic waistband. Center front gusset. Also available in 3/4 length.


REVERSIBLE SPORTS BRA (XT102)

Double ply reversible. Flat lock seam construction. Binding at neck and arm holes. Racerback design. Covered elastic at bottom hem.


WOMEN'S LEGGINGS (XB101)

Flat lock seam construction. 3" self fabric waist with 1/4" elastic. Also available in 3/4 length.


WOMEN'S CROP TOP (XT816)

Flat lock seam construction. Cover stitch at neck and arm holes. Racerback design.


WOMEN'S LEGGINGS WITH POCKET (XB102)

Flat lock seam construction. 3" self fabric waist with 1/4" elastic. Side panel with 5" x 8" sewn in pockets. Also available in 3/4 length.



REVERSIBLE BUFF (FACE MASK) (XA304)

Single Ply reversible. Can be worn as face mask or neck warmer. 14" height. Made of light weight, breathable, moisture wicking fabric.



COMPRESSION ARM SLEEVE (XA303)

Bicep to wrist length. Available with gripper elastic at top edge. Made of light weight, breathable, moisture wicking fabric.



WOMEN'S HEADBAND (XA301)

2" height. One size fits all. Made of light weight, breathable, moisture wicking fabric. Two fabric options available.



MEN'S HEADBAND (XA302)

4" height. One size fits all. Made of light weight, breathable, moisture wicking fabric. Two fabric options available.



REVERSIBLE BEACH TOWEL (XA307)

60" x 28" super soft microfiber fabric. Single ply reversible.



REVERSIBLE RALLY TOWEL (XA306)

18" x 12" super soft microfiber fabric. Single ply reversible.





PREMIUM



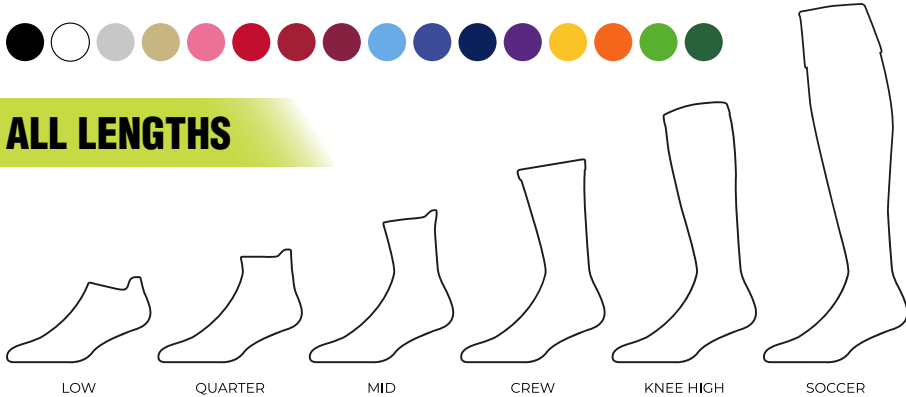
CLASSIC



AVAILABLE IN 16 COLORWAYS



ALL LENGTHS

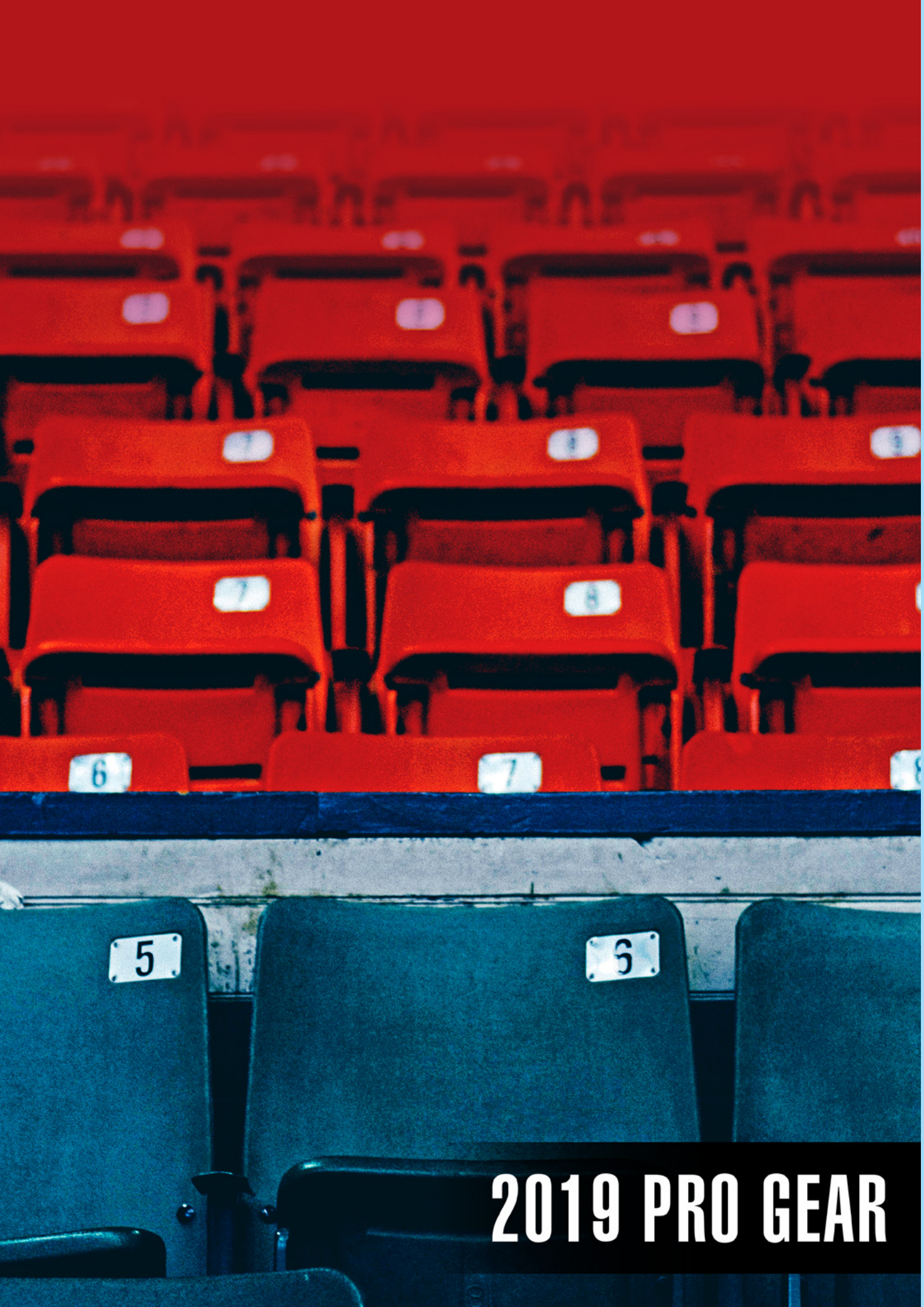


-  **Combed Cotton Blend**
-  **Strapped Fit™**
-  **Invisible Toe Seam**
-  **Compression Padding System**
-  **Moisture Wicking**



PRO GEAR

WWW.DYNAMICTERMSPORTS.COM 800.437.6223



2019 PRO GEAR

PRO GEAR

THE NEWEST LINE FROM DYNAMIC TEAM SPORTS

Now offering a wide selection of screen printed and embroidered apparel for affordable uniforms, warm-up gear, and post-game wear. Create a custom order to match your sublimated uniform, or start a new team line with our foundational pieces built for teams of all levels.

- ✓ Short sleeve and long-sleeve brandable practice jerseys
- ✓ Cool dry and water resistant options to complement your uniforms
- ✓ Polos and hats for professional team wear off the field



S

WMN'S 3" SPEED SHORT (NW5341)

100% Woven Polyester, 2.4 ounces per square yard.



SC

E

LADIES FRENCH TERRY PULLOVER HOODIE (LNEA500)

9-ounce, 52/48 cotton/poly sueded French terry.

S

SPOT SUBLIMATION

SC

SCREEN PRINT

E

EMBROIDERY



**LONG SLEEVE POSICHARGE®
COMPETITOR™ TEE (ST350LS)**

3.8-ounce, 100% polyester with PosiCharge technology.



YTH POSICHARGE® COMPETITOR™ TEE (YST350)

3.8-ounce, 100% polyester interlock with PosiCharge technology.



**WMN'S POSICHARGE® RACERMESH®
V-NECK TEE (LST340)**

3.8-ounce, 100% polyester flat back mesh with PosiCharge technology.



**POSICHARGE® MESH REVERSIBLE
SLEEVELESS TEE (T555)**

3.2-ounce, 100% polyester mesh with PosiCharge technology.



**YTH POSICHARGE® MESH
REVERSIBLE SLEEVELESS TEE (YT555)**

3.2-ounce, 100% polyester mesh with PosiCharge technology.



**SLEEVELESS POSICHARGE®
COMPETITOR™ TEE (ST352)**

3.8-ounce, 100% polyester interlock with PosiCharge technology.



SPOT SUBLIMATION



SCREEN PRINT



EMBROIDERY



Sc

UNISEX JERSEY LONG SLEEVE TEE (BC3501)

4.2-ounce, 100% Airlume combed and ring spun cotton, 32 singles.



Sc

WMN'S VERY IMPORTANT TEE® LONG SLEEVE (DT6201)

4.3-ounce, 100% ring spun combed cotton, 30 singles.



E

WMN'S SELECT LIGHTWEIGHT SNAG-PROOF POLO (CS419)

4.4-ounce snag-proof polyester.



S

WMN'S VERY IMPORTANT TEE® V-NECK (DT6503)

4.3-ounce, 100% ring spun combed cotton, 30 singles.



E

WMN'S SPORT-WICK® STRETCH CONTRAST 1/2-ZIP PULLOVER (LST854)

90/10 poly/spandex jersey.



Sc

WMN'S JERSEY RACERBACK TANK (BC6008)

4.2-ounce, 100% Airlume combed and ring spun cotton, 32 singles.

S

SPOT SUBLIMATION

Sc

SCREEN PRINT

E

EMBROIDERY



ULTRA COTTON® SLEEVELESS T-SHIRT (2700)

6-ounce, 100% cotton.



UNISEX JERSEY SHORT SLEEVE TEE (BC3001U)

4.2-ounce, 100% Airlume combed and ring spun cotton, 32 singles. USA Made.



COLLECTIVE OUTER SHELL JACKET (J900)

100% polyester shell with DWR finish, 100% polyester printed lining.



WMN'S COLLECTIVE INSULATED JACKET (L902)

100% polyester woven shell, 100% polyester knit bonded to water-resistant film insert and a 100% polyester microfleece lining.



WMN'S COLLECTIVE OUTER SHELL JACKET (L900)

100% polyester shell with DWR finish, 100% polyester printed lining.



COLLECTIVE INSULATED JACKET (J902)

100% polyester woven shell, 100% polyester knit bonded to a water-resistant film insert and a 100% polyester microfleece lining at side panels and under arms.



SPOT SUBLIMATION



SCREEN PRINT



EMBROIDERY



WMN'S JOGGER ECO-FLEECE PANT (AA31082)

6.49-ounce, 50/46/4 poly/cotton/rayon, 50% polyester(6.25% recycled), 46% cotton(6.25% organic), 4% rayon.



AGILITY FLEECE JOGGER (N6012)

6oz Poly-Tech Fleece.



COOLING PERFORMANCE LONG SLEEVE CREW (N3165)

4oz Micro Poly Interlock.



WMN'S LONG SLEEVE PERFORMANCE CREW (NW3002)

4oz Micro Poly Interlock.



YTH COOLING PERFORMANCE LONG SLEEVE CREW (NB3165)

4oz Micro Poly Interlock.



9'' COOLING PERFORMANCE SHORT (BC6008)

4oz Micro Poly Interlock.v



SPOT SUBLIMATION



SCREEN PRINT



EMBROIDERY


**WMN'S SLEEVELESS POSICHARGE®
COMPETITOR™ V-NECK TEE** (LST352)

3.8-ounce, 100% polyester interlock with PosiCharge technology.


**POSICHARGE® COMPETITOR™
1/4-ZIP PULLOVER** (ST357)

3.8-ounce, 100% polyester interlock with PosiCharge technology.


PULLOVER HOODED SWEATSHIRT (996M)

8-ounce, 50/50 cotton/poly NuBlend® pill-resistant fleece.


YTH SIX-PANEL TWILL CAP (YCP80)

100% cotton twill; 80/20 poly/cotton (Neons).


STAIN-RESISTANT POLO (K510)

5.6-ounce, 60/40 cotton/poly pique.



SPOT SUBLIMATION



SCREEN PRINT



EMBROIDERY

20
19



DYNAMIC

TEL: 1.800.437.6223 / EMAIL: INFO@DYNAMICTEAMSPORTS.COM / DYNAMICTEAMSPORTS.COM

   YouTube