

2019

**HIGH  
FIVE**  
SOCCER

AUGUSTA SPORTSWEAR BRANDS



**HIGH FIVE**  
SOCCER

THE  
BEAUTIFUL  
GAME  
COMES  
TO LIFE

SLIDE  
HARD  
TACKLE  
CLEAN







## CONTENTS

SUBLIMATION	6
JERSEYS	9
SHORTS	38
LADIES SUBLIMATION	44
LADIES/GIRLS	45
WARM-UPS	49
POLOS/ ½ ZIPS	53
ACCESSORIES	54
BAGS	55

## ICON KEY



### Dry-Excel™

Moisture evaporation and wicking fabric



### true hue technology™

true hue technology™ helps prevent dye migration



### Water Resistant

Resists rain & water to keep the body protected & dry



### Moisture Management

Fabric wicks moisture away keeping the body cool & dry



### 4-Way Stretch

Stretch properties allow for increased mobility



### Odor Resistant

Odor Resistant technology keeps garments fresher longer



### Slim Fit

Fitted athletic cut that allows total mobility but eliminates extra fabric



**Mix & Match  
Colors & Designs  
to Create the  
Perfect Kit**



**321520**  
ADULT V-NECK  
pg. 6



**321510**  
ADULT CREW  
pg. 7



**321810**  
ADULT SHORT  
pg. 6



**321522**  
LADIES V-NECK  
pg. 44



**321812**  
LADIES SHORT  
pg. 44

Hoop Stripe



Refraction



Diamond Fade



Twin Stripe

Twin Stripe

Diamond Fade

Catalan

Gradient

Diamond Fade



Twin Stripe

Optic Stripe

Diamond Fade

Diamond Fade

Peru

Hoop Stripe



Diamond Fade

Twin Stripe

Twin Stripe



Optic



Optic Stripe

Peru



Diamond Fade

Optic Stripe



Optic Stripe

Catalan



Twin Stripe

Hoop Stripe



Twin Stripe

Peru



Diamond Fade

Hero



Optic Stripe

Boomerang



Twin Stripe

Optic Stripe



Optic Stripe

Catalan



Twin Stripe

Optic



Optic Stripe

Refraction



Twin Stripe





custom +  
SUBLIMATION

SUBLIMATION



### SUBLIMATED V-NECK JERSEY



**321520** Adult S-2XL MSRP 36.00  
**321520** Youth S-L MSRP 34.00

- 100% polyester wicking knit
- Pad print label
- Raglan sleeves
- 12 designs available



### SUBLIMATED SOCCER SHORT



**321810** Adult S-2XL MSRP 36.00  
**321810** Youth S-L MSRP 34.00

- 100% polyester wicking smooth knit
- Pad print label
- Covered elastic waistband with inside drawcord
- 7-inch inseam
- Youth inseam graded
- 4 designs available



Diamond Fade

Diamond Fade

Diamond Fade

Catalan



Diamond Fade

All-Over

For more options visit [augustasportswear.com/sublimation](http://augustasportswear.com/sublimation)

Optic Stripe

Peru

Refraction

Optic



Optic Stripe

Diamond Fade

Twin Stripe

Optic Stripe



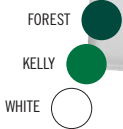


SUBLIMATED  
CREW NECK JERSEY



**321510** Adult S-2XL MSRP 36.00  
**321510** Youth S-XL MSRP 34.00

- 100% polyester wicking knit
- Pad print label
- Set-in sleeves
- 11 designs available



Diamond Fade



Diamond Fade

Hero



Optic Stripe

For more options visit [augustasportswear.com/sublimation](http://augustasportswear.com/sublimation)

Boomerang



Twin Stripe

Peru



Diamond Fade

Catalan



Twin Stripe

Hoop Stripe



Twin Stripe





JERSEYS



325410  
PG. 41





**GALACTIC JERSEY**

**322910** Adult S-XL MSRP 27.70  
**322911** Youth S-L MSRP 25.70

- 100% polyester wicking knit
- Sublimated front body
- Solid color non-sublimated back for easy decoration
- Low profile tapered collar
- Raglan sleeves







325420  
PG. 40



build  
your  
kit

pg. 32

IONIC JERSEY



**322920** Adult S-2XL MSRP 31.90  
**322921** Youth S-L MSRP 29.90

- 100% polyester propelit micromesh wicking knit
- Sublimated Micro-Interlock smooth 100% polyester knit shoulders and side panels
- Pad print label
- Low profile tapered collar



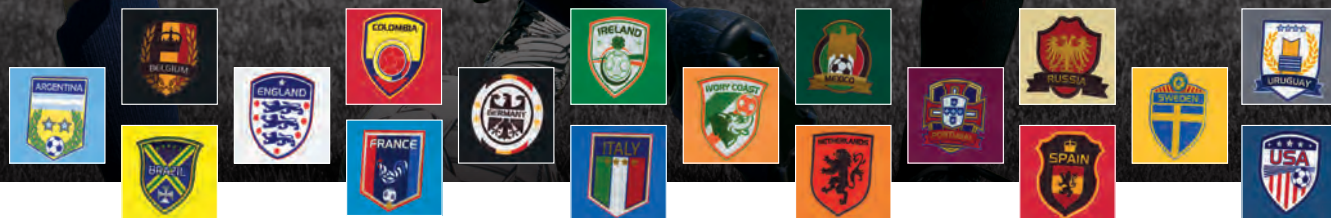




325410  
PG. 41

**18 COUNTRIES AVAILABLE**

STOCKED WITH COUNTRY BADGE  
ORDERS SHIP SAME DAY



GLOBE INTERNATIONAL JERSEY



**322894** Adult S-2XL MSRP 27.50  
**322895** Youth XS-L MSRP 25.50

- 100% polyester wicking fabric
- 92% polyester/8% spandex wicking pinhole mesh back and side panels
- Three piece overlapping collar
- Stocked and decorated as shown
- Set-in sleeves







325440  
PG. 40





pg. 32



ANFIELD SOCCER JERSEY

*true hue technology™*

**322950** Adult S-2XL MSRP 24.60  
**322951** Youth M-L MSRP 22.60

- 88% polyester/12% spandex knit with true hue technology™ that helps prevent dye migration
- 92% polyester/8% spandex wicking pinhole mesh back and neck
- Pad print label
- V-neck collar

**COORDINATING LADIES**  
**322952**  
 pg. 45

ATHLETIC GOLD/  
 BLACK/  
 WHITE  
 657

BLACK/  
 WHITE/  
 BLACK  
 419

COLUMBIA BLUE/  
 NAVY/  
 WHITE  
 614

FOREST/  
 WHITE/  
 BLACK  
 149

KELLY/  
 BLACK/  
 WHITE  
 616

LIME/  
 BLACK/  
 WHITE  
 680



MAROON/  
 BLACK/  
 WHITE  
 524

NAVY/  
 WHITE/  
 BLACK  
 163

ROYAL/  
 ATHLETIC GOLD/  
 WHITE  
 W83

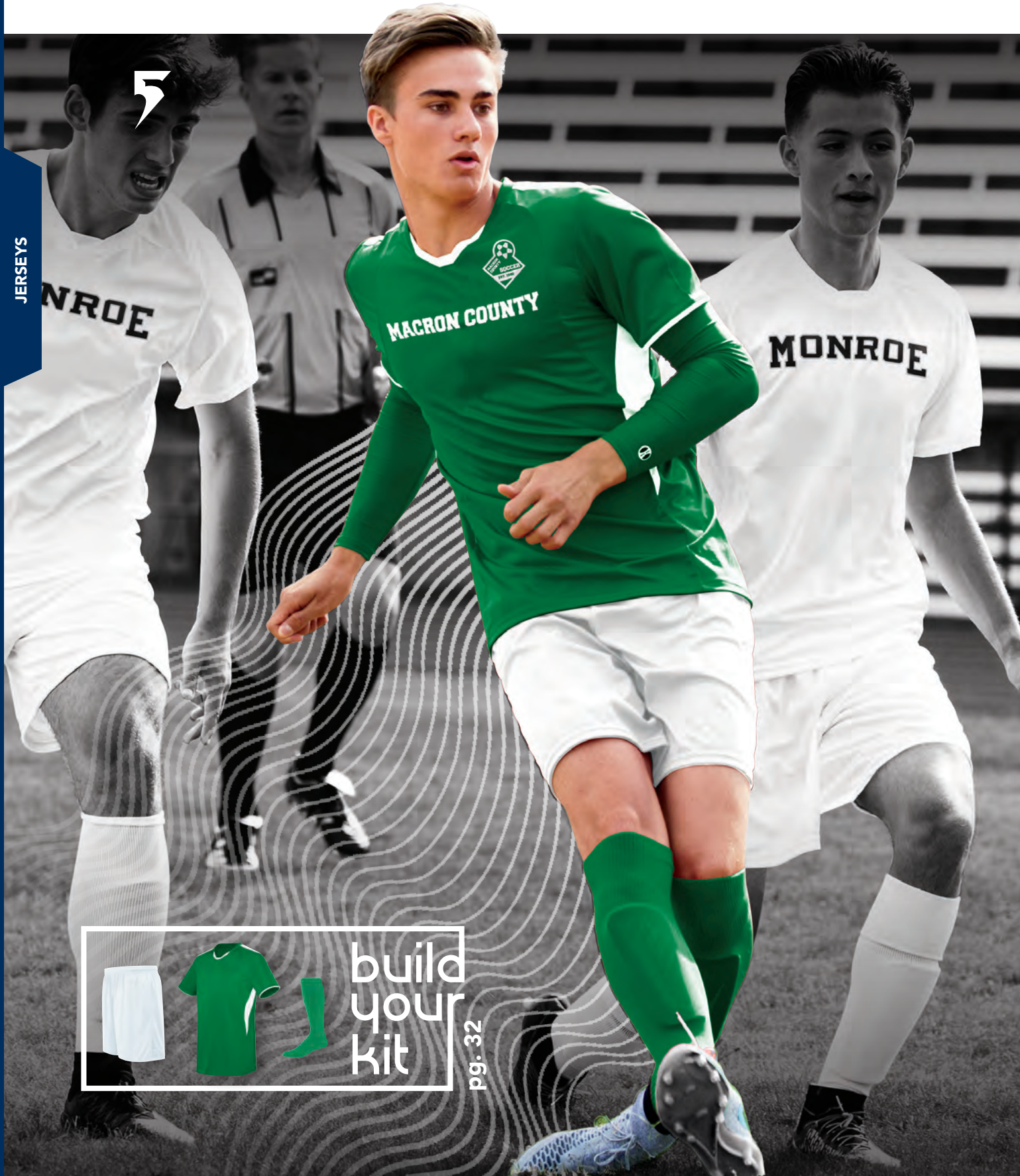
SCARLET/  
 BLACK/  
 WHITE  
 952

SCARLET/  
 NAVY/  
 WHITE  
 656

WHITE/  
 WHITE/  
 BLACK  
 660

ROYAL/  
 BLACK/  
 WHITE  
 526





build  
your  
kit

pg. 32





**GLOBE JERSEY**

**322890** Adult S-2XL MSRP 22.50  
**322891** Youth XS-L MSRP 20.50

- 100% polyester wicking smooth knit
- 92% polyester/8% spandex wicking pinhole mesh back and side panels
- Three piece overlapping collar
- Set-in sleeves

**NFHS WHITE OPTION**  
 THE SOLID WHITE GLOBE JERSEY IS NFHS AWAY TEAM UNIFORM COMPLIANT WHEN PAIRED WITH ANY WHITE SOCK







325440  
PG. 40



pg. 32





**NEW MILLENNIUM SOCCER JERSEY**

*true hue technology™*

**322960** Adult S-2XL MSRP 20.50  
**322961** Youth XS-L MSRP 18.50

- 100% polyester wicking smooth knit body with true hue technology™ that helps prevent dye migration
- 92% polyester/8% spandex wicking pinhole mesh sleeves and inserts with true hue technology™
- Pad print label
- Three piece overlapping collar construction
- Modified raglan sleeves

**NFHS WHITE OPTION**  
 THE SOLID WHITE MILLENNIUM SOCCER JERSEY IS NFHS AWAY TEAM UNIFORM COMPLIANT WHEN PAIRED WITH ANY WHITE SOCK







FRAGMENT  
PRINT  
DETAIL



pg. 32

COORDINATING  
LADIES/GIRLS

372332/372333  
372322/372323  
pg. 47



EVOLUTION SHORT SLEEVE JERSEY

PRINTED INSERTS

372330 Adult S-3XL MSRP 21.00  
372331 Youth S-L MSRP 20.00

- 100% polyester wicking smooth knit
- 100% polyester micro pique fragment printed inserts and sleeves
- Contrast color stitching
- Raglan sleeves

PINHOLE MESH INSERTS

372300 Adult S-3XL MSRP 20.00  
372301 Youth S-L MSRP 19.00

- 100% polyester wicking smooth knit
- 92% polyester/8% spandex wicking pinhole mesh inserts
- Contrast color stitching
- Raglan sleeves

**NFHS WHITE OPTION**  
THE SOLID WHITE EVOLUTION SHORT SLEEVE IS NFHS AWAY TEAM UNIFORM COMPLIANT WHEN PAIRED WITH ANY WHITE SOCK

ATHLETIC GOLD/  
GRAPHITE/  
WHITE  
W04

BLACK/  
GRAPHITE/  
WHITE  
489

FOREST/  
GRAPHITE/  
WHITE  
W19

GRAPHITE/  
GRAPHITE/  
WHITE  
X50

LIME/  
GRAPHITE/  
WHITE  
W18

MAROON/  
GRAPHITE/  
WHITE  
393

NAVY/  
GRAPHITE/  
WHITE  
371

ORANGE/  
GRAPHITE/  
WHITE  
W62

WHITE/  
WHITE/  
WHITE  
X25



PURPLE/  
GRAPHITE/  
WHITE  
647

ROYAL/  
GRAPHITE/  
WHITE  
648

SCARLET/  
GRAPHITE/  
WHITE  
W91

BLACK/  
FRAGMENT PRINT/  
WHITE  
Q20

GRAPHITE/  
FRAGMENT PRINT/  
WHITE  
Q26

NAVY/  
FRAGMENT PRINT/  
WHITE  
Q21

ROYAL/  
FRAGMENT PRINT/  
WHITE  
Q22

SCARLET/  
FRAGMENT PRINT/  
WHITE  
Q24

WHITE/  
FRAGMENT PRINT/  
WHITE  
Q25



### EVOLUTION LONG SLEEVE JERSEY

#### PRINTED INSERTS

<b>372340</b>	Adult	S-3XL	MSRP 26.00
<b>372341</b>	Youth	S-L	MSRP 25.00

- 100% polyester wicking smooth knit
- 100% polyester micro pique fragment printed inserts and sleeves
- Contrast color stitching
- Raglan sleeves

#### PINHOLE MESH INSERTS

<b>372310</b>	Adult	S-3XL	MSRP 25.00
<b>372311</b>	Youth	S-L	MSRP 24.00

- 100% polyester wicking smooth knit
- 92% polyester/8% spandex wicking pinhole mesh inserts
- Contrast color stitching
- Raglan sleeves



FRAGMENT  
PRINT  
DETAIL

**NFHS WHITE OPTION**  
THE SOLID WHITE EVOLUTION LONG SLEEVE IS NFHS AWAY TEAM UNIFORM COMPLIANT WHEN PAIRED WITH ANY WHITE SOCK







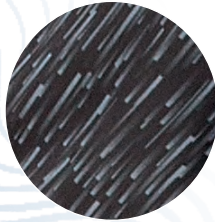
325370  
PG. 41



build  
your  
kit

pg. 32





TONAL STORM  
PRINT DETAIL



HAWTHORN SOCCER JERSEY

*true hue technology™*

**322940** Adult S-2XL MSRP 19.00  
**322941** Youth XS-L MSRP 17.00

- 100% polyester wicking knit with true hue technology™ that helps prevent dye migration
- 100% polyester wicking knit with storm print sublimated sleeves and back neck
- Pad print label
- Two piece collar
- Raglan sleeves







BACK



pg. 32



KINETIC JERSEY

**322820** Adult S-2XL MSRP 24.00

**322821** Youth XS-L MSRP 22.00

- 100% polyester wicking knit
- Contrasting collar and stitching
- Raglan sleeves

**NFHS WHITE OPTION**

THE SOLID WHITE KINETIC JERSEY IS NFHS AWAY TEAM UNIFORM COMPLIANT WHEN PAIRED WITH ANY WHITE SOCK

ATHLETIC GOLD/WHITE 596	BLACK/LIME 499	BLACK/WHITE 420	COLUMBIA BLUE/NAVY 294	FOREST/WHITE 436	KELLY/WHITE 340	LIME/BLACK 530	MAROON/WHITE 380	WHITE/WHITE 230
-------------------------	----------------	-----------------	------------------------	------------------	-----------------	----------------	------------------	-----------------



NAVY/WHITE 301	ORANGE/WHITE 320	PURPLE/WHITE 450	RASPBERRY/BLACK 531	ROYAL/WHITE 280	SCARLET/BLACK 406	SILVER GREY/BLACK 470	WHITE/ROYAL 220	WHITE/SCARLET 235
----------------	------------------	------------------	---------------------	-----------------	-------------------	-----------------------	-----------------	-------------------



pg. 32



MUNDO JERSEY

**322860** Adult S-2XL MSRP 21.00

**322861** Youth XS-L MSRP 19.00

- 100% polyester wicking knit
- 92% polyester/8% spandex wicking pinhole mesh sleeves
- Two piece collar
- Set-in sleeves

ATHLETIC GOLD/BLACK/WHITE 657	BLACK/BLACK/WHITE 529	BLACK/WHITE/VEGAS GOLD W14	COLUMBIA BLUE/BLACK/WHITE 519	KELLY/WHITE/BLACK 609	LIME/BLACK/WHITE 680	MAROON/BLACK/WHITE 524	NAVY/WHITE/SCARLET W53	ORANGE/WHITE/BLACK 651
-------------------------------	-----------------------	----------------------------	-------------------------------	-----------------------	----------------------	------------------------	------------------------	------------------------



POWER BLUE/WHITE/BLACK 814	POWER YELLOW/KELLY/ROYAL 841	PURPLE/BLACK/WHITE 497	ROYAL/WHITE/BLACK 150	SCARLET/BLACK/WHITE 952	SCARLET/KELLY/WHITE W94	SCARLET/ATHLETIC GOLD/NAVY W92	WHITE/BLACK/WHITE 132	WHITE/SCARLET/WHITE T88
----------------------------	------------------------------	------------------------	-----------------------	-------------------------	-------------------------	--------------------------------	-----------------------	-------------------------



build  
your  
kit

pg. 32



### LIBERTY JERSEY

**322780** Adult S-2XL MSRP 19.00

**322781** Youth XS-L MSRP 17.00

- 100% polyester wicking knit
- Raglan sleeves



BACK



build  
your  
kit

pg. 32



### TEMPEST JERSEY

**322710** Adult S-2XL MSRP 26.50

**322711** Youth XS-L MSRP 24.50

- 100% polyester wicking fabric
- V-neck collar







325410  
PG. 41



build  
your  
kit

pg. 32



**COORDINATING LADIES**  
**322872**  
 pg. 46



**HAWK JERSEY**

**322870** Adult S-2XL MSRP 18.00  
**322871** Youth XS-L MSRP 16.00

- 100% polyester wicking knit
- Two piece collar
- White/White colorway conforms to NFHS regulations
- Set-in sleeves

**NFHS WHITE OPTION**  
 THE SOLID WHITE HAWK JERSEY IS NFHS AWAY TEAM UNIFORM COMPLIANT WHEN PAIRED WITH ANY WHITE SOCK







THE GENESIS JERSEY **AVAILABLE IN YOUTH XXS**  
HIGH FIVE IS YOUR UNIFORM SOLUTION FOR ANY AGE OR SIZE



pg. 32



GENESIS JERSEY

**322730** Adult S-2XL MSRP 14.50  
**322731** Youth XXS-L MSRP 12.50

- 100% polyester wicking knit
- V-neck collar







325410  
PG. 41



build  
your  
kit

pg. 32





WEMBLEY SOCCER JERSEY

*true hue technology™*

<b>322930</b>	Adult	S-2XL	MSRP 16.00
<b>322931</b>	Youth	XS-L	MSRP 14.00

- 100% polyester wicking knit with true hue technology™ that helps prevent dye migration
- Pad print label
- Two piece collar
- Set-in sleeves









**CONVERSION  
REVERSIBLE JERSEY**

<b>322900</b>	Adult	S-XL	MSRP 25.90
<b>322901</b>	Youth	S-L	MSRP 23.90

- Outer layer of Micro-Interlock smooth 100% polyester knit
- Inner layer of 100% polyester wicking knit
- Fully reversible for wearing on either side
- Raglan sleeves
- Each layer hemmed separately for embellishment



ATHLETIC GOLD/  
KELLY  
W06

BLACK/  
WHITE  
420

FOREST/  
WHITE  
436

NAVY/  
WHITE  
301

ORANGE/  
WHITE  
320

ROYAL/  
ATHLETIC GOLD  
W84

ROYAL/  
WHITE  
280

SCARLET/  
ROYAL  
W89

SCARLET/  
WHITE  
408



1

SELECT JERSEY



**WEMBLEY**  
21 colors  
\$16.00



**LIBERTY**  
17 colors  
\$19.00



**MUNDO**  
18 colors  
\$21.00



**GENESIS**  
16 colors  
\$14.50



**HAWK**  
20 colors  
\$18.00



**HAWTHORN**  
18 colors  
\$19.00



**MILLENNIUM**  
21 colors  
\$20.50

1

2

3

# build your kit

Easy as 1-2-3







<b>EVOLUTION</b> 18 colors \$21.00	<b>KINETIC</b> 18 colors \$24.00	<b>CONVERSION</b> 9 colors \$25.90	<b>GLOBE INTER.</b> 18 colors \$27.50	<b>GALACTIC</b> 18 colors \$27.70	<b>IONIC</b> 12 colors \$31.90
--	--	--	---	---	--------------------------------------



<b>GLOBE</b> 19 colors \$22.50	<b>ANFIELD</b> 13 colors \$24.60	<b>TEMPEST</b> 17 colors \$26.50	<b>LADIES HAWK</b> 20 colors \$18.00	<b>LADIES EVOLUTION</b> 20 colors \$20.50	<b>LADIES ANFIELD</b> 13 colors \$24.60
--------------------------------------	--	--	--	---	---

# 2

## SELECT SHORT



<b>PRIMO SHORT</b> 5 colors \$12.50	<b>HAWK SHORT</b> 8 colors \$16.00	<b>ALBION SHORT</b> 8 colors \$17.60	<b>CLUB SHORT</b> 6 colors \$19.30	<b>IONIC SHORT</b> 12 colors \$21.30
---	--	--	--	--



<b>PREVAIL SHORT</b> 6 colors \$14.00	<b>HORIZON SHORT</b> 5 colors \$16.30	<b>STAMFORD SHORT</b> 8 colors \$18.40	<b>LADIES STAMFORD</b> 8 colors \$18.40	<b>LADIES HAWK</b> 8 colors \$16.00
---	---	--	---	---

# 3

## SELECT SOCK



<b>ATHLETIC SOCK</b> 23 colors \$6.40	<b>SPORT SOCK</b> 7 colors \$7.50	<b>PERFORMANCE SOCK</b> 7 colors \$9.10
---	---	---

All High Five soccer styles are eligible for kit pricing

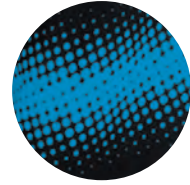
Decoration and packaging available for additional charge.  
For decoration and volume pricing - please contact our customer call center at **800-237-6695** or email [sales@augustasportswear.com](mailto:sales@augustasportswear.com)





PRISM GOALKEEPER JERSEY

**324360** Adult S-XL MSRP 26.40  
**324361** Youth S-L MSRP 24.40



PRISM  
PRINT  
DETAIL

- 100% polyester wicking knit
- Sublimated stripe sleeves
- Two piece collar
- Raglan sleeves

ATHLETIC  
GOLD/  
BLACK  
597

BLACK/  
WHITE  
420

FOREST/  
WHITE  
436

LIME/  
BLACK  
530

NAVY/  
WHITE  
301

ORANGE/  
BLACK  
321

POWER  
BLUE/  
BLACK  
818



POWER  
YELLOW/  
BLACK  
457

RASPBERRY/  
BLACK  
531

ROYAL/  
BLACK  
289

ROYAL/  
WHITE  
280

SCARLET/  
BLACK  
406

SCARLET/  
WHITE  
408

WHITE/  
BLACK  
226



SCRIMMAGE VEST

**321200** Adult One Size MSRP 11.60  
**321201** Youth One Size MSRP 10.60

- 100% polyester tricot mesh
- Improved fit, longer length



ATHLETIC  
GOLD  
595

LIME  
096

ROYAL  
060

SCARLET  
083



SLIM FIT

### REVERSIBLE PRACTICE JERSEY

<b>217</b>	Adult	S-2XL	MSRP 22.00
<b>216</b>	Youth	S-L	MSRP 20.00

- Two layers of 100% polyester tricot mesh
- Fully reversible for wearing on either side
- Raglan sleeves
- Each layer hemmed separately for embellishment



JERSEYS



### WICKING COLOR BLOCK SOCCER SHIRT

<b>218</b>	Adult	S-3XL	MSRP 19.00
<b>219</b>	Youth	S-L	MSRP 17.00

- 100% polyester wicking knit
- 93% polyester/7% spandex mesh inserts
- Heat sealed label
- Raglan sleeves

**NFHS WHITE OPTION**  
THE SOLID WHITE WICKING COLOR BLOCK SOCCER SHIRT IS NFHS AWAY TEAM UNIFORM COMPLIANT WHEN PAIRED WITH ANY WHITE SOCK







WICKING SOCCER SHIRT

<b>243</b>	Adult	S-2XL	MSRP 23.30
<b>244</b>	Youth	S-L	MSRP 21.30

- 100% polyester wicking knit
- Heat sealed label
- V-neck collar
- Raglan sleeves

**NFHS WHITE OPTION**

THE SOLID WHITE WICKING SOCCER SHIRT IS NFHS AWAY TEAM UNIFORM COMPLIANT WHEN PAIRED WITH ANY WHITE SOCK



STRIKER JERSEY

<b>214</b>	Adult	S-2XL	MSRP 18.50
<b>215</b>	Youth	S-L	MSRP 16.50

- 100% polyester wicking knit
- Heat sealed label
- Raglan sleeves

**NFHS WHITE OPTION**

THE SOLID WHITE STRIKER JERSEY IS NFHS AWAY TEAM UNIFORM COMPLIANT WHEN PAIRED WITH ANY WHITE SOCK





**NFHS WHITE OPTION**

THE SOLID WHITE CUTTER JERSEY IS NFHS AWAY TEAM UNIFORM COMPLIANT WHEN PAIRED WITH ANY WHITE SOCK



**CUTTER JERSEY**

*true hue technology™*

**1517** Adult  
S-3XL MSRP 13.40  
**1518** Youth  
XS-XL MSRP 11.40

- 100% polyester wicking knit with true hue technology™ that helps prevent dye migration
- 92% polyester/8% spandex wicking pinhole mesh underarms
- Pad print label
- Raglan sleeves
- Longer length







## LIGHTNING JERSEY & SHORT

### JERSEY

<b>1600</b>	Adult	S-3XL	MSRP 16.50
<b>1601</b>	Youth	XXS-L	MSRP 14.50

- 100% polyester wicking knit
- Pad print label
- V-neck collar
- Set-in sleeves

### SHORT

<b>1605</b>	Adult	S-3XL	MSRP 15.20
<b>1606</b>	Youth	XXS-L	MSRP 13.40

- 100% polyester wicking knit
- Pad print label
- Covered elastic waistband with inside drawcord
- 8-inch inseam
- Youth inseam graded



BLACK/  
WHITE  
420

DARK GREEN/  
WHITE  
438

GOLD/  
BLACK  
244

GRAPHITE/  
WHITE  
R04

KELLY/  
WHITE  
340

LIME/  
BLACK  
530

MAROON/  
WHITE  
380

NAVY/  
WHITE  
301



ORANGE/  
BLACK  
321

POWER BLUE/  
BLACK  
818

TEAL/  
BLACK  
435

SILVER/  
BLACK  
098

POWER  
YELLOW/BLACK  
457

PURPLE/  
WHITE  
450

RED/  
WHITE  
400

ROYAL/  
WHITE  
280

WHITE/  
WHITE  
230

#### NFHS WHITE OPTION

THE SOLID WHITE LIGHTNING JERSEY IS  
NFHS AWAY TEAM UNIFORM COMPLIANT  
WHEN PAIRED WITH ANY WHITE SOCK



## ATTACKING THIRD JERSEY & SHORT

### JERSEY

<b>1620</b>	Adult	S-2XL	MSRP 14.50
<b>1621</b>	Youth	XXS-L	MSRP 12.50

- 100% polyester wicking knit
- Pad print label
- Set-in sleeves

### SHORT

<b>1622</b>	Adult	S-2XL	MSRP 13.50
<b>1623</b>	Youth	XXS-L	MSRP 11.50

- 100% polyester wicking knit
- Pad print label
- Covered elastic waistband with inside drawcord
- 8-inch inseam
- Youth inseam graded



**NFHS WHITE OPTION**  
THE SOLID WHITE ATTACKING THIRD JERSEY IS NFHS AWAY TEAM UNIFORM COMPLIANT WHEN PAIRED WITH ANY WHITE SOCK





IONIC SOCCER SHORT

**325420** Adult S-2XL MSRP 21.30  
**325421** Youth S-L MSRP 19.30

- 100% polyester propelit micromesh wicking knit
- Covered elastic waistband with inside drawcord
- Contrast color sublimated side panel
- 6 1/2-inch inseam
- Youth inseam graded



ATHLETIC GOLD/WHITE 596 | BLACK/WHITE 420 | COLUMBIA BLUE/WHITE 293 | FOREST/WHITE 436 | LIME/BLACK 530 | MAROON/WHITE 380 | ROYAL/WHITE 280 | SCARLET/BLACK 406 | WHITE/BLACK 226 | NAVY/WHITE 301 | ORANGE/WHITE 320 | ROYAL/ATHLETIC GOLD W84



STAMFORD SOCCER SHORT

*true hue technology™*

**325440** Adult S-2XL MSRP 18.40  
**325441** Youth M-L MSRP 16.40

- 100% polyester wicking knit with true hue technology™ that helps prevent dye migration
- Ultra soft micro mesh side inserts and gusset
- Pad print label
- Covered elastic waistband with inside drawcord
- 7-inch inseam
- Youth inseam graded



**COORDINATING LADIES** | **325442**  
 pg. 48



BLACK/WHITE 420 | FOREST/WHITE 436 | GRAPHITE/WHITE R04 | WHITE/BLACK 226 | NAVY/WHITE 301 | ROYAL/ATHLETIC GOLD W84 | SCARLET WHITE 408 | ROYAL/WHITE 280



ALBION SHORT

**325380** Adult S-2XL MSRP 17.60  
**325381** Youth XS-L MSRP 15.60

- 100% polyester wicking knit
- Covered elastic waistband with inside drawcord
- 7-inch inseam
- Youth inseam graded



BLACK/LIME 499 | BLACK/ORANGE 423 | BLACK/WHITE 420 | WHITE/WHITE 230 | KELLY/WHITE 340 | NAVY/WHITE 301 | ROYAL/WHITE 280 | SCARLET/WHITE 408



# SHORT DECORATION AVAILABLE

For more information connect with our decoration experts at [sales@augustasportswear.com](mailto:sales@augustasportswear.com)

SHORTS



## HAWK SHORT

<b>325410</b>	Adult	S-2XL	MSRP 16.00
<b>325411</b>	Youth	XS-L	MSRP 14.00

- 100% polyester wicking knit
- Covered elastic waistband with inside drawcord
- White/White combo is lined
- 6 1/2-inch inseam
- Youth inseam graded

**COORDINATING LADIES** | **325412**  
pg. 48



BLACK/WHITE 420	FOREST/WHITE 436	GRAPHITE/WHITE R04	WHITE/WHITE 230	NAVY/WHITE 301	ROYAL/ATHLETIC GOLD W84	SCARLET/WHITE 408	ROYAL/WHITE 280
-----------------	------------------	--------------------	-----------------	----------------	-------------------------	-------------------	-----------------



## WICKING MESH SOCCER SHORT WITH PIPING

<b>460</b>	Adult	S-2XL	MSRP 11.80
<b>461</b>	Youth	XS-L	MSRP 9.80

- 100% polyester wicking knit
- Covered elastic waistband with inside drawcord
- 6-inch inseam
- Youth inseam graded



BLACK/BLACK 425	GOLD/BLACK 244	BLACK/WHITE 420	WHITE/BLACK 226	DARK GREEN/WHITE 438	NAVY/WHITE 301	RED/WHITE 400	ROYAL/WHITE 280
-----------------	----------------	-----------------	-----------------	----------------------	----------------	---------------	-----------------





## CLUB SHORT

**325400** Adult S-2XL MSRP 19.30

**325401** Youth XS-L MSRP 17.30

- 100% polyester moisture wicking micro interlock with mechanical stretch
- Micro mesh side inserts and back yoke
- Covered elastic waistband with inside drawcord
- Contrast color piping at leg hem
- 7-inch inseam
- Youth inseam graded



BLACK/  
WHITE  
420

FOREST/  
WHITE  
436

NAVY/  
WHITE  
301

WHITE/  
WHITE  
230

ROYAL/  
BLACK  
289

SCARLET/  
BLACK  
406



## PREVAIL SHORT

**325430** Adult S-2XL MSRP 14.00

**325431** Youth XS-L MSRP 12.00

- 100% polyester propelit micromesh
- Pad print label
- Elastic waistband with inside drawcord
- 7-inch inseam
- Youth inseam graded



BLACK  
080

GRAPHITE  
059

WHITE  
005

NAVY  
065

ROYAL  
060

SCARLET  
083



## PRIMO SHORT

**325390** Adult S-2XL MSRP 12.50

**325391** Youth XXS-L MSRP 10.50

- 100% polyester wicking knit
- Covered elastic waistband with inside drawcord
- 7-inch inseam
- Youth inseam graded



BLACK  
080

WHITE  
005

NAVY  
065

ROYAL  
060

SCARLET  
083



### WICKING MESH SOCCER SHORT

<b>475</b>	Adult	S-2XL	MSRP 15.50
<b>476</b>	Youth	XS-L	MSRP 13.50

- 100% polyester wicking mesh
- Covered elastic waistband with inside drawcord
- 6-inch inseam
- Youth inseam graded



BLACK 080      WHITE 005      ROYAL 060      NAVY 065      MAROON 045

1420

9-INCH  
(YOUTH  
INSEAM  
GRADED)



1425



7-INCH  
(YOUTH  
INSEAM  
GRADED)



### TRAINING SHORT & OCTANE SHORT

<b>1420</b>	Adult	S-3XL	MSRP 8.10
<b>1421</b>	Youth	S-L	MSRP 8.10
<b>1425</b>	Adult	S-3XL	MSRP 8.10
<b>1426</b>	Youth	XS-L	MSRP 8.10

- 100% polyester wicking knit
- Full-cut
- Pad print label
- Covered elastic waistband with inside drawcord



MAROON 045\*      GOLD 025      PURPLE 050\*      KELLY 030      DARK GREEN 035      SILVER GREY 016      GRAPHITE 059

\* Maroon & Purple shades can vary by brand, please contact our Customer Care with questions





LADIES SUBLIMATED  
V-NECK JERSEY

**321522** Ladies  
S-2XL MSRP 36.00

- 100% polyester smooth wicking knit body
- Tagless label
- V-neck collar
- Raglan sleeves
- 12 designs available



LADIES SUBLIMATED  
SOCCER SHORT

**321812** Ladies  
S-2XL MSRP 36.00

- 100% polyester wicking smooth knit
- Pad print label
- Covered elastic waistband with inside drawcord
- 5-inch inseam
- 4 designs available



LADIES SUBLIMATION

Hoopstripe



Twin Stripe

Peru



Twin Stripe

Optic



Optic Stripe

Catalan



Twin Stripe



Diamond  
Fade

Diamond  
Fade

For more options visit [augustasportswear.com/sublimation](http://augustasportswear.com/sublimation)



325442  
PG. 48

LADIES/GIRLS



build  
your  
kit

pg. 32

COORDINATING  
ADULT/YOUTH

322950 | 322951

pg. 13



LADIES ANFIELD SOCCER JERSEY

true hue technology™

322952 Ladies S-2XL MSRP 24.60

- 88% polyester/12% spandex knit with true hue technology™ that helps prevent dye migration
- 92% polyester/8% spandex wicking pinhole mesh back and neck
- Pad print label

FOREST/ WHITE/ BLACK 149	NAVY/ WHITE/ BLACK 163	BLACK/ WHITE/ BLACK 419	MAROON/ BLACK/ WHITE 524	ROYAL/ BLACK/ WHITE 526	COLUMBIA BLUE/ NAVY/ WHITE 614
-----------------------------------	---------------------------------	----------------------------------	-----------------------------------	----------------------------------	--



SCARLET/ NAVY/ WHITE 656	ATHLETIC GOLD/ BLACK/ WHITE 657	WHITE/ WHITE/ BLACK 660	LIME/ BLACK/ WHITE 680	SCARLET/ BLACK/ WHITE 952	ROYAL/ ATHLETIC GOLD/WHITE W83	KELLY/ BLACK/ WHITE 616
-----------------------------------	---	----------------------------------	---------------------------------	------------------------------------	---	----------------------------------





build  
your  
kit

pg. 32

COORDINATING  
ADULT/YOUTH

322870 | 322871  
pg. 23

**NFHS WHITE OPTION**

THE SOLID WHITE LADIES HAWK JERSEY IS NFHS AWAY TEAM UNIFORM COMPLIANT WHEN PAIRED WITH ANY WHITE SOCK



LADIES HAWK JERSEY

322872 Ladies XS-2XL MSRP 18.00

- 100% polyester wicking knit
- Two piece collar
- White/White colorway conforms to NFHS regulations
- Set-in sleeves





**COORDINATING  
ADULT/YOUTH**  
372300 | 372301  
372330 | 372331  
pg. 16



**LADIES EVOLUTION SHORT SLEEVE JERSEY**

**PRINTED INSERTS**

**372332** Ladies S-2XL MSRP 20.50  
**372333** Girls S-L MSRP 19.50

- 100% polyester moisture wicking micro interlock with mechanical stretch
- 100% polyester micro pique fragment printed inserts and sleeves
- Contrast color stitching
- Raglan sleeves

**PINHOLE MESH INSERTS**

**372322** Ladies S-2XL MSRP 19.50  
**372323** Girls S-L MSRP 18.50

- 100% polyester moisture wicking micro interlock with mechanical stretch
- 92% polyester/8% spandex wicking pinhole mesh inserts
- Contrast color stitching
- Raglan sleeves



FRAGMENT  
PRINT  
DETAIL

**NFHS WHITE OPTION**

THE SOLID WHITE LADIES EVOLUTION SHORT SLEEVE JERSEY IS NFHS AWAY TEAM UNIFORM COMPLIANT WHEN PAIRED WITH ANY WHITE SOCK







### LADIES STAMFORD SOCCER SHORT

true hue technology™

**325442** Ladies S-2XL MSRP 18.40

- 100% polyester wicking knit with true hue technology™ that helps prevent dye migration
- Ultra soft micro mesh side inserts and gusset
- Pad print label
- Covered elastic waistband with inside drawcord
- 5 ½-inch inseam



**COORDINATING ADULT/YOUTH** | **325440 | 325441**  
pg. 40



### LADIES HAWK SHORT

**325412** Ladies S-2XL MSRP 16.00

- 100% polyester wicking knit
- Covered elastic waistband with inside drawcord
- White/White combo is lined
- 5-inch inseam



**COORDINATING ADULT/YOUTH** | **325410 | 325411**  
pg. 41





LADIES FIT

MEDALIST JACKET 2.0

<b>4395</b>	Adult	S-3XL	MSRP 31.90
<b>4396</b>	Youth	XS-L	MSRP 30.90
<b>4397</b>	Ladies	XS-2XL	MSRP 31.90

- Heavyweight 100% polyester matte brushed tricot
- Heat sealed label
- Set-in sleeves
- Front pockets
- Self-fabric cuffs



LADIES FIT

TAPERED LEG PANT

<b>7731</b>	Adult	XS-3XL	MSRP 31.90
<b>7732</b>	Youth	S-L	MSRP 30.90
<b>7733</b>	Ladies	XS-2XL	MSRP 31.90

- Heavyweight 100% polyester matte brushed tricot
- Tapered fit
- Covered elastic waistband with inside drawcord
- Side seam pockets
- Back yoke
- Zipper on outside lower leg







TEMPLATE B1

TEMPLATE O2

LADIES FIT

FLUX JACKET

<b>229568</b>	Adult	S-3XL	MSRP 58.80
<b>229668</b>	Youth	S-XL	MSRP 55.80
<b>229768</b>	Ladies	XS-2XL	MSRP 58.80

- Temp-Sof fabric is a colored heather performance fleece with high mechanical stretch and a bird's-eye flecked surface
- Wik-Sof™ Dry-Excel™ inserts
- Side pocket zippers
- Welded silicone tape accents at shoulders
- Dual inside pockets
- Raglan sleeves
- Open bottom with adjustable elastic hidden drawcord (On Adult and Ladies' only)



BLACK HEATHER/ LT GOLD/ WHITE 878

BLACK HEATHER/ ORANGE/ WHITE 873

BLACK HEATHER/ SCARLET/ WHITE 877

BLACK HEATHER/ WHITE/ WHITE 879

BLACK HEATHER/ VEGAS GOLD/ WHITE 875

MAROON HEATHER/ BLACK/ WHITE 871

NAVY HEATHER/ LT GOLD/ WHITE 887

NAVY HEATHER/ SCARLET/ WHITE 867

NAVY HEATHER/ WHITE/ WHITE 882

NAVY HEATHER/ VEGAS GOLD/ WHITE 886

ROYAL HEATHER/ BLACK/ WHITE 872

SCARLET HEATHER/ BLACK/ WHITE 876

WARM-UPS



SIDE SEAM POCKETS

ZIPPERED LOWER LEG

LADIES FIT



FLUX TAPERED LEG PANT

<b>229570</b>	Adult	S-3XL	MSRP 50.10
<b>229670</b>	Youth	S-XL	MSRP 47.10
<b>229770</b>	Ladies	XS-2XL	MSRP 50.10

- Temp-Sof fabric is a colored heather performance fleece with high mechanical stretch and a bird's-eye flecked surface
- Wik-Sof™ Dry-Excel™ inserts
- Covered elastic waistband with inside drawcord
- Welded silicone taping accents except on Black/Black
- Tapered leg

AVAILABLE IN ADULT & LADIES ONLY



BLACK HEATHER/ BLACK/ K54

BLACK HEATHER/ WHITE/ WHITE 879

NAVY HEATHER/ WHITE/ WHITE 882



WELD JACKET

229543 Adult XS-3XL MSRP 55.50

- 90% polyester/10% spandex, 4-way stretch woven fabric
- Front zipper with reflective zipper pull and matte tips
- Sleeve pocket with silver media port and reflective metallic silicone welded zipper
- Raglan sleeve
- Locking welt front pockets
- Dual inside pockets
- Open bottom with adjustable elastic hidden drawcord



SPANDEX  
BOUND  
CUFFS



SIDE SEAM POCKETS

ZIPPERED  
LOWER LEG



WELD PANT

229544 Adult XS-3XL MSRP 47.90

- 90% polyester/10% spandex, 4-way stretch woven fabric
- Covered elastic waistband with inside drawcord



WARM-UPS





### NEW TRAINER JACKET

**5571** Adult XS-3XL MSRP 43.00

- 100% polyester performance wicking fleece
- Set-in sleeves with articulated seaming at elbow
- Shoulder seams roll to front of body
- Side seam pockets
- Rib-knit collar, cuffs and bottom band



### NEW PERFORMANCE FLEECE JOGGER

**5566** Adult XS-3XL MSRP 34.30

- 100% polyester performance wicking fleece
- Covered elastic waistband with inside drawcord
- Side seam pockets
- Rib-knit bottom cuff
- Articulated seaming at the knees
- Tapered leg





**STRIATED  
COLLECTION**



LADIES  
FIT



### STRIATED POLO

**222556** Adult S-3XL MSRP 37.10

**222756** Ladies XS-2XL MSRP 37.10

- 54% nylon/46% polyester Striated Engineered knit that enhances breathability through high-heat areas
- Tagless label
- Three-button placket
- Engineered seamless design allows the garment to skim the body while providing unrestricted range of motion and minimizing chafing
- Set-in sleeves



LADIES  
FIT



### STRIATED 1/2 ZIP PULLOVER

**222557** Adult S-3XL MSRP 41.30

**222757** Ladies XS-2XL MSRP 41.30

- 54% nylon/46% polyester Striated Engineered knit that enhances breathability through high-heat areas
- Tagless label
- Engineered seamless design allows the garment to skim the body while providing unrestricted range of motion and minimizing chafing



BLACK  
080

GRAPHITE  
059

NAVY  
065

ROYAL  
060

SCARLET  
083



BLACK  
080

GRAPHITE  
059

NAVY  
065

ROYAL  
060

SCARLET  
083

See our full line of Polos/Pullovers @ [augustasportswear.com](http://augustasportswear.com)

POLOS / 1/2 ZIPS





### ATHLETIC SOCK

**328030** Adult XS-XL MSRP 6.40

- 80% acrylic/14% nylon/6% elastic
- Knee-length tube sock
- Fully cushioned foot



\* Maroon shades can vary by brand, please contact our Customer Care with questions



### PERFORMANCE SOCK

**329110** Small 18"  
Medium 24"  
Large 30" MSRP 9.10

- 90% polyester/6% elastic/4% spandex
- Breathable mesh vents
- Knee-length sock with fold-down cuff
- Extra cushioning and support in areas of the foot and ankle that are susceptible to running, impact or injury
- Mesh vents increase breathability



### SPORT SOCK

**328060** Adult S-L MSRP 7.50

- 38% nylon/31% cotton/16% acrylic/  
7% polyester/5% elastic/3% spandex
- Knee-length tube sock with fold-down cuff
- Fully cushioned foot
- Arch and ankle support



ARCH COMPRESSION  
REDUCES FATIGUE

HEEL/TOE CONSTRUCTION





### BACKPACK

**327850** 18"W x 17"H x 9"D MSRP 25.10

- Heavy duty 600D polyester with soft PVC backing
- Adjustable padded shoulder straps, hand strap and corded zipper pulls

MESH PANELED ZIPPERED INTERIOR BALL COMPARTMENT

TWO ZIPPERED SIDE COMPARTMENTS WITH MESH PANELS



SHOWN WITHOUT MESH BALL HOLDER

### ALL SPORT BACKPACK

**327890** 12"W x 18.5"H x 7"D MSRP 33.00

- 100% polyester heavy denier
- Front zipper pocket with deep interior pouch holds shoes or accessories
- Large main interior compartment
- Convertible mesh pouch stashes when not in use

REINFORCED MULTIUSE SIDE POCKETS WITH PASS-THRU STRAP FOR BAT OR LACROSSE STICK



BAGS





### GEAR BAG

**327870** 10.5"W x 19"H x 10.5"D  
MSRP 29.70

- 100% polyester heavy denier with soft PVC backing and mesh venting side panels
- Drawstring top closure with rain flap
- ID holder on back
- Front zippered pocket with deep interior pouch holds shoes or accessories
- Backpack shoulder straps
- Versatile interior compartment features flexible divider, separating ventilated section from main compartment
- Ball fits in either section of main compartment



ATHLETIC  
GOLD/  
BLACK  
597

BLACK/  
BLACK  
425

FOREST/  
BLACK  
434

LIME/  
BLACK  
530

MAROON/  
BLACK  
388

ORANGE/  
BLACK  
321

PURPLE/  
BLACK  
496

RASPBERRY/  
BLACK  
531

ROYAL/  
BLACK  
289

SCARLET/  
BLACK  
406

To see our full offering of Bags & Accessories visit us online at [augustasportswear.com](http://augustasportswear.com)



**CINCH BAG**

**1905**    14.5"W x 16.5"H    MSRP 4.10

- 100% nylon 210-denier nylon with PU coating
- Hemmed top with drawcord closure
- Bottom corner grommets for reinforcement
- Reinforced seams for durability



MESH POUCH  
STASHED



**CONVERTIBLE DRAWSTRING BACKPACK**

**327920**    18"W x 14"H    MSRP 12.00

- 100% polyester
- Drawstring main compartment
- Convertible mesh pouch stashes when not in use







### TRAINING BAG

**327790** 22"W x 12"H

MSRP 28.10

- 600 denier polyester with PVC backing
- Two zippered end compartments and one zippered side compartment
- Hand straps
- Adjustable shoulder straps
- Corded zipper pulls

ATH GOLD/  
BLACK/WHITE  
657

BLACK/  
BLACK/WHITE  
420

FOREST/  
BLACK/WHITE  
148

NAVY/  
BLACK/WHITE  
311

PURPLE/  
BLACK/WHITE  
497



ROYAL/  
BLACK/WHITE  
526

SCARLET/  
BLACK/WHITE  
952

MAROON/  
BLACK/WHITE  
524

ORANGE/  
BLACK/WHITE  
322



BLACK  
080

### STADIUM EQUIPMENT BAG

**327720** 36"W x 13"H x 14"D

MSRP 32.00

- 600 denier polyester with PVC backing
- Zippered side pocket
- Corded zipper pulls
- Hand straps
- Adjustable shoulder strap

To see our full offering of Bags visit us on line at [augustasportswear.com](http://augustasportswear.com)

# SIZE CHART

MEASUREMENTS SHOWN BELOW ARE BODY MEASUREMENTS - NOT ACTUAL GARMENT MEASUREMENTS

## ADULT | YOUTH

### JERSEYS | TRAINING TOPS

RECOMMENDED SIZE	INDIVIDUAL CHEST SIZE
YXXS	20" - 21"
YXS	21" - 23"
YS	24" - 26"
YM	27" - 30"
YL	31" - 34"
AS	34" - 36"
AM	37" - 40"
AL	41" - 44"
AXL	45" - 48"
A2XL	49" - 52"
A3XL	53" - 56"

### SHORTS | TRAINING BOTTOMS

RECOMMENDED SIZE	INDIVIDUAL WAIST SIZE
YXXS	19" - 20"
YXS	20" - 22"
YS	22" - 24"
YM	24" - 26"
YL	26" - 28"
YXL	28" - 30"
AS	29" - 30"
AM	31" - 34"
AL	35" - 38"
AXL	39" - 42"
A2XL	43" - 46"
A3XL	47" - 50"

## LADIES | GIRLS'

### JERSEYS | TRAINING TOPS

RECOMMENDED SIZE	INDIVIDUAL CHEST SIZE
GS	23" - 25"
GM	26" - 29"
GL	30" - 33"
WXS	32" - 33"
WS	34" - 35"
WM	36" - 37"
WL	38" - 40"
WXL	41" - 43"
W2XL	44" - 47"

### SHORTS | TRAINING BOTTOMS

RECOMMENDED SIZE	INDIVIDUAL WAIST SIZE
GS	20" - 22"
GM	23" - 24"
GL	24" - 25"
WXS	22" - 24"
WS	25" - 27"
WM	28" - 30"
WL	31" - 33"
WXL	34" - 36"
W2XL	37" - 39"

GL DIFFERS FROM WXS IN BUST SHAPING, AND FIT THROUGH HIPS AND WAIST

GL DIFFERS FROM WS IN RISE, INSEAM, AND FIT THROUGH HIPS

**UNDERSIZED** - GARMENTS SPECIFICALLY MARKED UNDERSIZED ARE INTENDED TO BE CLOSE FITTING, PERFECT AS THE FIRST LAYER OF YOUR UNIFORM.

**IF YOU PREFER A LOOSE FIT -** WE RECOMMEND ORDERING UNDERSIZED GARMENTS ONE SIZE LARGER THAN YOUR CHEST IN THE ABOVE SIZE CHART.

# INDEX

## STYLE

## PAGE #

### SUBLIMATION

321510	7
321520	6
321810	6

### ADULT/YOUTH JERSEYS

214/215	36
217/216	35
218/219	35
243/244	36
1517/1518	37
1600/1601	38
1620/1621	39
321200/321201	34
322710/322711	23
322730/322731	27
322780/322781	23
322820/322821	22
322860/322861	22
322870/322871	25
322890/322891	15
322894/322895	11
322900/322901	31
322910/322911	9
322920/322921	10
322930/322931	29
322940/322941	21
322950/322951	13
322960/322961	17
324360/324361	34
372300/372301	18
372310/372311	19
372330/372331	18
372340/372341	19

### ADULT/YOUTH SHORTS

460/461	41
475/476	43
1420/1421	43
1425/1426	43
1605/1606	38
1622/1623	39
325380/325381	40
325390/325391	42
325400/325401	42
325410/325411	41
325420/325421	40

## STYLE

## PAGE #

325430/325431	42
325440/325441	40

### LADIES SUBLIMATION

321522	44
321812	44

### LADIES/GIRLS JERSEYS

322872	46
322952	45
372322/372323	47
372332/372333	47

### LADIES SHORTS

325412	48
325442	48

### WARM-UPS

4395/4396/4397	49
5566	52
5571	52
7731/7732/7733	49
229543	51
229544	51
229568/229668/229768	50
229570/229670/229770	50

### POLOS/ 1/2 ZIPS

222556/222756	53
222557/222757	53

### ACCESSORIES

328030	54
328060	54
329110	54

### BAGS

1905	57
327720	58
327790	58
327850	55
327870	56
327890	55
327920	57





AUGUSTA  
SPORTSWEAR  
BRANDS



PITCH  
PERFECT  
COLORS