



OUTERWEAR  

AUGUSTA SPORTSWEAR BRANDS



3 Jackets in 1

Warmth **10** / 10

Weight **Super Heavy**

INTERVAL JACKET

229137 Adult S-3XL MSRP 195.70

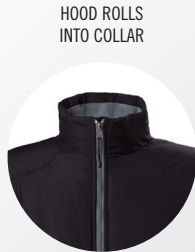
- Inner Mircon (TM) lightweight puffy jacket and Storm-Bloc (TM) waterproof outer shell jacket combines to make our warmest jacket

INNER JACKET

- Hidden shockcord system
- Spandex banded adjustable cuffs
- Front/inside zippered pockets & inside media pocket
- Quilting lines that are decoration friendly
- Inner Jacket can be worn alone

OUTER JACKET

- Encased concealed drawstring with pocket access
- Outer water-tight pocket on left chest for decoration access
- Fully seam sealed for waterproof protection



INNER JACKET HAS LIGHTWEIGHT QUILTING FOR ADDED WARMTH

MICROFLEECE INSIDE COLLAR



BLACK/WHITE/CARBON H56



RAIDER COLLECTION

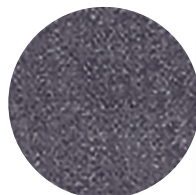
Warmth **9** / 10

Weight **Heavy**

RAIDER JACKET

229189 Adult S-3XL MSRP 92.50

- Micro-Cord™ is a woven polyester fabric with a raised, ribbed texture
- Quilted polyester taffeta lining with a reflective silver print interior
- Adjustable and detachable lined hood with hook & loop fastener
- Interior decoration zipper
- Dual front and chest zipper pockets
- Dual inside zippered pockets
- Adjustable cuff with hook & loop fastener



TECH PRINT FABRIC FOR A UNIQUE TEXTURED LOOK

TEMPLATE Q2



CARBON PRINT/BLACK H05 CARBON PRINT/DK GREEN H08 CARBON PRINT/LT GOLD H09 CARBON PRINT/MAROON H06 CARBON PRINT/NAVY H03 CARBON PRINT/ROYAL H02 CARBON PRINT/SCARLET H01 CARBON PRINT/WHITE H04 CARBON PRINT/ORANGE H07



Warmth **9** / 10 Weight **Heavy**

CONQUEST JACKET

229162 Adult S-3XL MSRP 114.20

- Duraweav™ fabric has a smooth nylon surface
- Anti-pill microfleece and quilted nylon lining
- Adjustable 3-piece hood with eyelets and concealed cord locks
- Knee length
- Front right chest media pocket with inside hidden cord port
- Front pockets with microfleece lining



BLACK 080

NAVY 065

ROYAL 060

SCARLET 083



TWO-WAY FRONT ZIPPER

ELASTICIZED HOOK & LOOP FASTENER CUFFS

Warmth **8** / 10 Weight **Mid**

SCOUT 2.0 JACKET

229002 Adult XS-4XL MSRP 63.10
5XL & 6XL in select colors

- Micro-Cord™ is a woven polyester fabric with a raised, ribbed texture
- Taffeta lined sleeves
- Interior storm flap
- Interior decoration zipper
- Inside zippered valuables pocket
- Open bottom with adjustable elastic hidden drawcord



BLACK 080

DK GREEN 035

NAVY 065

GRAPHITE 059

ROYAL 060

OMNI-SOF™ MICROFLEECE LINED FOR ADDED WIND-RESISTANCE



ADJUSTABLE HOOK & LOOP CUFFS

DUAL FRONT ZIPPERED POCKETS



Warmth 8/10 **Weight** Heavy

CHARGER JACKET

229059	Adult	S-4XL	MSRP 71.70
229259	Youth	S-XL	MSRP 68.70

- Micro-Cord™ is a woven polyester fabric with a raised, ribbed texture
- Omni-Sof™ microfleece lining
- Nylon sleeve lining
- Adjustable hood with eyelets and concealed cord locks on Adult sizes only (Youth has elastic)
- Raglan sleeves
- Front zippered pockets
- Open bottom with adjustable elastic hidden drawcord on Adult only
- Coordinating pant 229056/229256, pg. 420



BLACK/ LT GOLD R16	BLACK/ ORANGE 423	BLACK/ SCARLET 500	BLACK/ WHITE 420	CARBON/ WHITE F52	DK GREEN/ WHITE 438
--------------------------	-------------------------	--------------------------	------------------------	-------------------------	---------------------------



KELLY/ WHITE 340	MAROON/ WHITE 380	NAVY/ LT GOLD S28	NAVY/ WHITE 301	ROYAL/ WHITE 280	SCARLET/ WHITE 408
------------------------	-------------------------	-------------------------	-----------------------	------------------------	--------------------------



DROPPED TAIL



OPEN BOTTOM HEMS

Warmth 6/10 **Weight** Light

PACER PANT

229056	Adult	S-3XL	MSRP 48.90
229256	Youth	S-XL	MSRP 45.90

- Micro-Cord woven polyester fabric with a raised, ribbed texture
- Mesh lined upper leg and nylon lining lower leg
- Front pockets
- Back pockets with zipper
- Zipper on outside lower leg and bottom snaps

AVAILABLE IN ADULT ONLY



NAVY 065	ROYAL 060	SCARLET 083	BLACK 080	CARBON J96
-------------	--------------	----------------	--------------	---------------

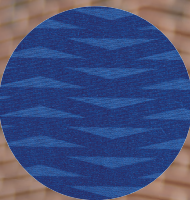


RANGE COLLECTION

OUTERWEAR FULL-ZIP JACKETS



TECH WEAVE PRINT



229554 PG. 419



RELECTIVE ZIPPER PULL & MATTE TIPS



TEMPLATE W3



Warmth

7/10

Weight

Mid



TEMPLATE TW76

DROPPED TAIL

RANGE JACKET

229542 Adult S-3XL MSRP 69.60

229642 Youth S-XL MSRP 54.70

in select colors

- Tech weave printed Micron™ lightweight polyester
- Omni-Sof™ microfleece lined
- Taffeta lined sleeves
- Adjustable 3 piece hood with eyelets & concealed cord locks on Adult only (elastic on youth)
- Raglan sleeves
- Shiny coated front pockets with black pull cord
- Interior decoration zipper
- Inside zippered valuables pocket
- Half-elastic cuffs
- Open bottom with adjustable elastic hidden drawcord on Adult sizes only

AVAILABLE IN YOUTH



CARBON J96

NAVY/CARBON E81

FOREST/CARBON E79

MAROON/CARBON E82

ORANGE 029

ROYAL/CARBON E86

SCARLET/CARBON E90

SCARLET 083

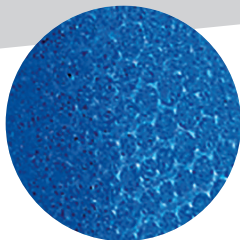
WHITE/CARBON E94

Warmth **7** / 10 Weight **Mid**

BIONIC HOODED JACKET

229017 Adult S-3XL MSRP 57.40
229217 Youth S-XL MSRP 54.40

- Micron™ polyester lightweight, wind/water resistant fabric
- Embossed Micron blocking at hood, shoulders, & top sleeves with the Screenmesh pattern
- Quilted, polyester, taffeta lining
- Adjustable quilted hood with eyelets & concealed cord locks on Adult only
- Interior decoration zipper
- Inside zippered pocket
- Dual front zippered pockets
- Coordinating pants: 229095/229295, pg. 420



EMBOSSED
PATTERN

HALF-ELASTIC CUFFS



BLACK/
CARBON
D86

CARBON/
BLACK
E84

DK GREEN/
CARBON
C84

MAROON/
CARBON
E92

NAVY/
CARBON
E81

ROYAL/
CARBON
E86

SCARLET/
CARBON
E90



222412 | 222212 | 222312
Bionic Jacket
pg. 368



229095 | 229295 | 229395
Sable Pant
pg. 368



229027 | 229227
Bionic Quarter Zip Pullover
pg. 417



229019
Bionic Windshirt
pg. 419

**MORE FROM
THE BIONIC
COLLECTION**

Prices subject to change without notice



Warmth **7**/₁₀ Weight **Mid**

HOMEFIELD JACKET

229111 Adult S-3XL MSRP 55.40
229211 Youth S-XL MSRP 52.40

- Micron™ poly shell micro-denier polyester
- Adjustable hood with eyelets & concealed cord locks on Adult
- Raglan sleeves
- Half-elastic cuffs and bottom
- Coordinating pants: Adult 229095/229295, pg. 420



Warmth **7**/₁₀ Weight **Mid**

HOODED TAFFETA JACKET/FLEECE LINED

3280 Adult S-4XL MSRP 48.90
3281 Youth XS-L MSRP 45.90

- Outer shell of 100% nylon taffeta
- Body, sleeves and hood lined with 75% polyester/13% rayon/12% cotton grey heather fleece
- Hood with drawcord and sliders (youth has elastic)
- Reinforced slash front pockets with zippers
- Elastic cuffs and bottom





COLLECTION

CONTROL YOUR COMFORT



3D TEXTURED BRUSHED BACK BONDED SOFTSHELL IS ENGINEERED FOR BREATHABLE WARMTH



Warmth 6/10 **Weight** Mid

3D REGULATE SOFT SHELL JACKET

229592	Adult	S-3XL	MSRP 88.90
229792	Ladies	XS-2XL	MSRP 88.90
		3XL in select color	

- 3D Regulate Soft Shell outer fabric in 96% polyester/4% spandex, 4-way stretch bonded to 100% polyester, 3D Waffle textured brushed back for breathable warmth
- Inside 3D Regulate Soft Shell fabric rolls over to the front of collar for softness and comfort
- Zipper garage with partial storm flap
- Front zippered pockets
- Dual inside pockets
- Internal storm cuffs for complete weather protection
- Adjustable elastic hidden drawcord with on Adult

WELDED SILICONE ACCENT

ADULT



LADIES

AVAILABLE
IN LADIES
3XL



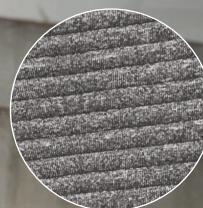
DUAL FRONT ZIPPER
ON LADIES



EXTENDED
DROPPED TAIL
ON LADIES



COLLECTION



3D SEAMLESS INSULATED KNIT TRAPS HEAT TO KEEP YOU WARM WHILE 3D CHANNELS RELEASE EXCESS HEAT TO KEEP YOU COMFORTABLE



BACK



CORDINATING PULLOVERS

NEW 3D REGULATE JACKET

229588 Adult XS-3XL MSRP 62.60

- 100% polyester heathered knit with seamless quilted insulation for added warmth
- Wik-Sof™ performance fleece lower body & hood
- 3-piece adjustable mesh lined hood with concealed cord locks
- Front zippered pockets
- Spandex bound cuff
- Dropped tail
- Coordinating pants 229171 pg. 432



229594 | 228784
3D Regulate Pullover
pg. 394



BLACK HEATHER/BLACK K54

NAVY HEATHER/NAVY K64

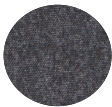
ROYAL HEATHER/ROYAL K66

SCARLET HEATHER/SCARLET K67

FOREST HEATHER/FOREST K95

SILVER HEATHER/SILVER 60E

MAROON HEATHER/MAROON K69



TECH
PRINT



Warmth 6/10 **Weight** Mid

RAIDER SOFT SHELL JACKET

229157 Adult S-3XL MSRP 76.20
4XL in select colors

229357 Ladies XS-2XL MSRP 76.20
3XL in select colors

- Lightweight, softshell outer fabric in 96% polyester, 4% spandex bonded to brushed back polyester
- Adjustable hood with drawcord (not available on Ladies' XS)
- Internal storm cuffs for weather protection
- Open bottom with adjustable elastic hidden drawcord



AVAILABLE IN ADULT 4XL



CARBON
PRINT/
BLACK
H05

CARBON
PRINT/
NAVY
H03

AVAILABLE IN LADIES 3XL



CARBON
PRINT/
BLACK
H05

CARBON
PRINT/
WHITE
H04

AVAILABLE IN ADULT ONLY



CARBON
PRINT/
FOREST
H69

CARBON
PRINT/
PURPLE
H68

CARBON
PRINT/
ORANGE
H07

CARBON
PRINT/
ROYAL
H02

CARBON
PRINT/
SCARLET
H01

CARBON
PRINT/
MAROON
H06

DUAL ZIPPERED POCKETS
AND CHEST POCKET

MORE FROM
THE RAIDER
COLLECTION



229545 | 229645
Raider Pullover S/S
pg. 415



229189
Raider Jacket
pg. 350



229155 | 229655
Raider Pullover
pg. 412

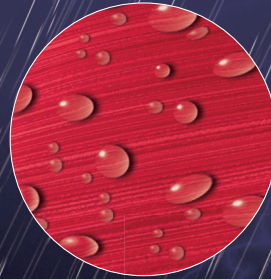


229194
Pitch Pullover
pg. 410



226011 | 226211
Raider Pant
pg. 415

Prices subject to change without notice



DURABLE WATER RESISTANT
FINISH KEEPS YOU DRY WHILE
KNIT SOFTSHELL BREATHES TO
KEEP YOU COMFORTABLE

SLEEVE
POCKET

229539

Warmth **6/10** Weight **Mid**



DEVIATE JACKET

229739

with Storm Dfend™ Technology

229539 Adult XS-3XL MSRP 78.50
229739 Ladies XS-2XL MSRP 78.50
in select colors

- Dry-Excel™ bonded polyester is a scuba bonded fabric featuring a tonal striation
- Poly/spandex storm cuffs
- Ladies' fit on style 229739
- Full front zipper with reflective zipper pull
- Storm flap and zipper garage to keep elements out
- Front zippered pockets
- Dual inside pockets

AVAILABLE IN LADIES



BLACK 080 CARBON 096 NAVY 065 WHITE 005 ROYAL 060 SCARLET 083

MORE FROM THE DEVIATE COLLECTION



229539 | 229739
Deviat Pullover
pg. 390



229515 | 229715
Deviat Vest
pg. 385





STORM D FEND™

TECHNOLOGY



DURABLE WATER RESISTANT FINISH KEEPS YOU DRY WHILE KNIT SOFTSHELL BREATHES TO KEEP YOU COMFORTABLE

REFLECTIVE ZIPPER PULL



Warmth **7** / 10 Weight **Mid**

INVERT JACKET with Storm Dfend™ Technology

229540 Adult XS-3XL MSRP 82.70

- Sweater knit bonded to microfleece
- Wik Sof Dry-Excel™ inserts
- Stretch woven zipper garage and storm flap
- Front zippered pockets
- Dual inside pockets



BLACK/CARBON D86 BLACK/WHITE 420 CARBON/WHITE F52 NAVY/WHITE 301 ROYAL/WHITE 280 SCARLET/WHITE 408

OMBRE ZIPPER

WIK-SOFT™ INSERTS

MORE FROM THE INVERT COLLECTION



229536 | 229736
Invert 1/2 Zip Pullover
pg. 391



FLIGHT SLEEVE ZIPPERED POCKET WITH PEN HOLDERS



ROUCHED DETAILING ON LADIES FRONT & BACK SLEEVES



FLIGHT BOMBER JACKET

Warmth **7** / 10

Weight **Heavy**

229532 Adult XS-3XL MSRP 62.80
4XL & 5XL in select colors

- Micro-Cord™ is a woven polyester fabric with a raised, ribbed texture
- Quilted polyester taffeta lining
- Front zipper (Antique gold metal zipper and pulls)
- Quilted storm flap
- Decoration zipper
- Front snap pockets with top flap
- Inside zippered valuables pocket
- Rib-knit collar, cuffs and bottom band



LADIES FLIGHT BOMBER JACKET

Warmth **5** / 10

Weight **Light**

229732 Ladies XS-2XL MSRP 54.40
3XL in select colors

- Micron™ polyester is a lightweight, wind/water resistant fabric
- 100% polyester taffeta fully lined
- Front zipper (Antique gold metal zipper and pulls)
- Quilted storm flap
- Decoration zipper
- Set-in sleeves with roused detailing
- Front snap pockets with top flap
- Inside zippered valuables pocket
- Rib-knit collar, cuffs and bottom band



LADIES FIT

ARMY GREEN H19

BLACK 080

CARBON PRINT L99

NAVY 065

ARMY GREEN H19

BLACK 080

NAVY 065



Warmth **7** / 10 Weight **Heavy**

HERITAGE JACKET

229140 Adult S-4X MSRP 60.90
5XL in select colors

229240 Youth S-XL MSRP 57.90

- Duraweav™ fabric has a smooth oxford nylon surface
- Quilted nylon lining
- 15mm matte painted enamel snap front
- Rib-trim collar, cuffs, and bottom hem
- Front pockets
- Inside valuables pocket



SNAP FRONT



NAVY AVAILABLE IN 5XL

DARK GREEN/LT GOLD/WHITE 506

MAROON/WHITE 380

BLACK/ORANGE/WHITE 611

NAVY 065

AVAILABLE IN YOUTH

BLACK AVAILABLE IN 5XL



BLACK 080

BLACK/LT GOLD/WHITE R21

BLACK/SCARLET/WHITE R20

BLACK/WHITE 420

NAVY/WHITE 301

NAVY/LT GOLD/WHITE S30

ROYAL/WHITE 280

SCARLET/WHITE 408

Warmth **6** / 10 Weight **Mid**

CANNON JACKET

229190 Adult XS-3XL MSRP 72.90

- Lightweight, soft shell outer fabric in 96% polyester, 4% spandex, bonded to brushed back polyester
- Raglan sleeves
- Dual side pockets
- Rib-trim collar, cuffs, and bottom hem



TEMPLATE TW31

SNAPS ARE PLACED APART FOR FULL FRONT DECORATION



BLACK/GRAPHITE R17

GRAPHITE/BLACK 172

NAVY/GRAPHITE S21

Warmth **5** / 10 Weight **Light**



SATIN BASEBALL JACKET/STRIPED TRIM

3610 Adult XS-3XL MSRP 44.00

- Outer shell of 100% nylon satin
- Lined with 100% polyester brushed tricot
- Raglan sleeves
- Rib-knit collar cuffs and bottom band
- Reinforced slash front pockets



COLUMBIA
BLUE/
WHITE
293

LIGHT
PINK/
WHITE
465

METALLIC
GOLD/
WHITE
299

METALLIC
SILVER/
WHITE
260



BLACK/
WHITE
420

RED/
WHITE
400

ROYAL/
WHITE
280

NAVY/
WHITE
301



Warmth **5** / 10 Weight **Light**

SATIN BASEBALL JACKET/SOLID TRIM

3600 Adult S-5XL MSRP 44.00

- Outer shell of 100% nylon satin
- Lined with 100% polyester brushed tricot
- Rib-knit collar, cuffs and bottom band
- Raglan sleeves
- Reinforced slash front pockets



BLACK
080





GUSSETED
BACK FOR
RANGE OF
MOTION



4-INCH
DROPPED TAIL



Coordinating Pant
229056 | 229256
pg. 420

TEMPLATE
G2



Warmth

6/10

Weight

Mid

AGGRESSION JACKET

229062	Adult	S-3XL	MSRP 68.50
229262	Youth	S-XL	MSRP 65.50

- Micro-Cord™ is a woven polyester fabric with a raised, ribbed texture
- Athletic mesh lined body and taffeta lined sleeves
- Concealed adjustable hood stows when not in use
- Back vent with adjustable closure for decoration access
- Front zippered pockets
- Open bottom with adjustable elastic hidden drawcord on Adult only

AVAILABLE IN ADULT ONLY



BLACK/
ORANGE
423

BLACK/
SCARLET
500

BLACK/
WHITE
420

MAROON/
WHITE
380

NAVY/
WHITE
301

ROYAL/
WHITE
280

SCARLET/
WHITE
408

BLACK/
LT GOLD
R16

DK GREEN/
WHITE
438

NAVY/
LT GOLD
S28



TEMPLATE FS48



Coordinating Pant
229095 | 229295
pg. 420

JERSEY LINING

TEMPLATE N2



Warmth **5** / 10 Weight **Light**

COLLISION JACKET

229076	Adult	S-3XL	MSRP 54.40
229276	Youth	S-XL	MSRP 51.40

- Micron™ polyester is a lightweight, wind/water resistant fabric
- Lightweight heather grey jersey and nylon lining
- Heat sealed label
- Youth style features partial elasticized hood and non adjustable hem
- Front zippered pockets
- Open bottom with adjustable elastic hidden drawcord



BLACK/
ORANGE
423

BLACK/
SCARLET
500

BLACK/
WHITE
420

DK GREEN/
WHITE
438

MAROON/
WHITE
380

NAVY/
WHITE
301

PURPLE/
WHITE
450

ROYAL/
WHITE
280

SCARLET/
WHITE
408



Warmth **5** / 10 Weight **Light**

HOODED COACH'S JACKET

3102 Adult S-3XL MSRP 27.40

- Outer shell of 100% nylon taffeta
- Lined with 100% polyester brushed tricot
- Raglan sleeves
- Front pockets
- Elastic cuffs



GOLD
025

BLACK
080

DARK
GREEN
035



MAROON
045

NAVY
065

RED
040



ROYAL
060

WHITE
005



Warmth **5** / 10 Weight **Light**

NYLON COACH'S JACKET/LINED

3100	Adult	S-3XL	MSRP 23.10
		4XL & 5XL in select colors	
3101	Youth	XS-L	MSRP 22.10

- Outer shell of 100% nylon taffeta
- Lined with 100% polyester brushed tricot
- Raglan sleeves
- Front pockets
- Elastic cuff



AVAILABLE IN ADULT S-3XL & YOUTH XS-L



DARK GREEN 035

MAROON 045

AVAILABLE IN ADULT S-5XL & YOUTH XS-L



BLACK 080

NAVY 065

RED 040

ROYAL 060

AVAILABLE IN ADULT S-3XL



KELLY 030

WHITE 005

BROWN 079

GRAPHITE 059

KHAKI 010

OLIVE DRAB GREEN 179

AVAILABLE IN ADULT S-3XL



POWER PINK 809

COLUMBIA BLUE 089

ORANGE 029

GOLD 025

PURPLE 050

LIGHT PINK 095

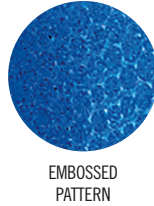


Warmth **5** / 10 Weight **Light**

BIONIC JACKET

222412	Adult	S-3XL	MSRP 51.20
222212	Youth	S-XL	MSRP 48.20
222312	Ladies	XS-2XL	MSRP 51.20

- Micron™ polyester is a lightweight, wind/water resistant fabric
- Sleeves and arms are embossed with the Screenmesh print
- Jersey (BODY) and taffeta (SLEEVES) lining for added warmth
- Raglan sleeves
- Front pockets
- Elastic cuffs
- Open bottom with adjustable elastic hidden drawcord



CARBON/BLACK E84 CARBON/KELLY C92 CARBON/LT GOLD C91 CARBON/ORANGE F57 CARBON/PURPLE F53 CARBON/UNIVERSITY BLUE F40 CARDINAL/CARBON C83



BLACK/CARBON D86 DK GREEN/CARBON C84 MAROON/CARBON E92 NAVY/CARBON E81 ROYAL/CARBON E86 SCARLET/CARBON E90

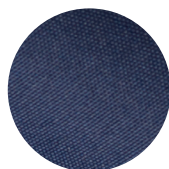
Warmth **4** / 10 Weight **Light**

SABLE PANT

229095	Adult	XS-3XL	MSRP 43.50
229295	Youth	S-XL	MSRP 40.50
229395	Ladies	XS-2XL	MSRP 43.50

- Micron™ lightweight polyester shell
- Mesh (UPPER LEG) and nylon lining (LOWER LEG)
- Covered elastic waistband with inside drawcord
- Front pockets
- Back pockets with zipper
- Zipper on outside lower leg and bottom snaps





MATTE MICRO POLYESTER



Warmth **4** / 10 Weight **Light**

AVAIL JACKET

3500	Adult	S-2XL	MSRP 39.40
3501	Youth	S-L	MSRP 38.40
3502	Ladies	XS-2XL	MSRP 39.40

- Outer shell of 100% matte micro polyester
- Lined with 100% polyester taffeta
- Front pockets
- Half-elastic cuffs



Warmth **4** / 10 Weight **Light**

AVAIL PANT

3504	Adult	S-2XL	MSRP 35.10
3505	Youth	S-L	MSRP 34.10
3506	Ladies	XS-2XL	MSRP 35.10

- Outer shell of 100% matte micro polyester
- Lined with 100% polyester mesh
- Covered elastic waistband with inside drawcord
- Side seam pockets
- Zipper on outside lower leg



BLACK/WHITE
420

BLACK/RED
424

RED/WHITE
400

ROYAL/WHITE
280

NAVY/WHITE
301

LADIES FIT



Warmth 5/10 **Weight** Light

WELD FULL ZIP JACKET

229543 Adult XS-3XL MSRP 55.50

- 90% polyester/10% spandex, 4-way stretch woven fabric
- Zippered sleeve pocket with media port
- Raglan sleeves
- Locking front and dual inside pockets
- Spandex bound cuff
- Open bottom with adjustable elastic hidden drawcord



DROPPED TAIL



BLACK/WHITE 420
 CARBON/WHITE F52
 FOREST/WHITE 436
 KELLY/WHITE 340
 MAROON/WHITE 380
 NAVY/WHITE 301



ORANGE/WHITE 320
 PURPLE/WHITE 450
 ROYAL/WHITE 280
 SCARLET/WHITE 408
 WHITE/CARBON E94



Warmth 5/10 **Weight** Light

WELD PANT

229544 Adult XS-3XL MSRP 47.90

- 90% polyester/10% spandex, 4-way stretch woven fabric
- Covered elastic waistband with inside drawcord
- Side seam pockets
- Zipper on outside of lower leg
- Straight leg



BLACK/WHITE 420
 CARBON/WHITE F52
 NAVY/WHITE 301

COORDINATING PULLOVER



229596 | 229696
 Weld Hybrid Pullover
 pg. 413



Prices subject to change without notice



PLEATED BACK DETAILING

229743

TEMPLATE ET1

REFLECTIVE ACCENT AROUND FRONT ZIPPER



Warmth 5/10 Weight Light

LADIES WELD JACKET

229743 Ladies XS-2XL MSRP 55.50

- 90% polyester/10% spandex, 4-way stretch woven fabric
- Low profile collar
- Raglan sleeves
- Locking welt front pockets
- Dual inside pockets
- Elastic cuffs and bottom



BLACK 080 CARBON J96 FOREST 038 KELLY 030 MAROON 045 NAVY 065



ORANGE 029 PURPLE 050 ROYAL 060 SCARLET 083 WHITE 005



THUMBHOLE

229799

COVERED ELASTIC CUFF

Warmth 5/10 Weight Light

LADIES WELD JOGGER

229799 Ladies XS-2XL MSRP 45.80

- 90% polyester/10% spandex, 4-way stretch woven fabric
- Covered elastic waistband with inside drawcord on XS-S front pockets
- Tapered leg



BLACK 080 CARBON J96 NAVY 065



FLUX JACKET

229568	Adult	S-3XL	MSRP 58.80
229668	Youth	S-XL	MSRP 55.80
229768	Ladies	XS-2XL	MSRP 58.80

- Temp-Sof fabric is a colored heather performance fleece with high mechanical stretch and a bird's-eye flecked surface
- Wik-Sof™ Dry-Excel™ inserts
- Side pocket zippers
- Welded silicone tape accents at shoulders
- Dual inside pockets
- Raglan sleeves
- Open bottom with adjustable elastic hidden drawcord (On Adult and Ladies' only)



BLACK HEATHER/ LT GOLD/ WHITE 878	BLACK HEATHER/ ORANGE/ WHITE 873	BLACK HEATHER/ SCARLET/ WHITE 877	BLACK HEATHER/ WHITE/ WHITE 879
---	--	---	---



BLACK HEATHER/ VEGAS GOLD/ WHITE 875	MAROON HEATHER/ BLACK/ WHITE 871	NAVY HEATHER/ LT GOLD/ WHITE 887	NAVY HEATHER/ SCARLET/ WHITE 867
--	--	--	--



NAVY HEATHER/ WHITE/ WHITE 882	NAVY HEATHER/ VEGAS GOLD/ WHITE 886	ROYAL HEATHER/ BLACK/ WHITE 872	SCARLET HEATHER/ BLACK/ WHITE 876
--	---	---	---



TEMPLATE B1



TEMPLATE O2

LADIES FIT

MORE FROM THE FLUX COLLECTION



222502
Flux 1/2 Zip Pullover
pg. 403



222506 | 222606
Flux Shirt
Short Sleeve
pg. 241



222507 | 222607
Flux Shirt
Long Sleeve
pg. 229



222513 | 222713
Flux Polo
pg. 341



229569 | 229669
| **229769**
Flux Straight Leg Pant
pg. 424



229570 | 229670
| **229770**
Flux Tapered Leg Pant
pg. 424



DEDICATION JACKET

229131	Adult	XS-3XL	MSRP 57.70
229231	Youth	S-L	MSRP 54.70
229331	Ladies	XS-2XL	MSRP 57.70

- Combined Flex-Sof™ and Dry-Excel™ Perform create a smooth, lightweight, and sueded polyester knit surface
- Micromesh blocking placed along heat zones for ventilation
- Two inside zippered pockets
- Front zippered pockets
- Banded cuffs
- Open bottom with adjustable elastic hidden drawcord (Youth has non-adjustable hem)
- Coordinating pants 229036/229236, 229336, pg. 432



DROPPED TAIL



TEMPLATE RLB7

TEMPLATE RLB7



BLACK/ LT GOLD/ WHITE R21	BLACK/ ORANGE/ WHITE 611	BLACK/ SCARLET/ WHITE R20	FOREST/ BLACK/ WHITE 148	MAROON/ BLACK/ WHITE 524
------------------------------------	-----------------------------------	------------------------------------	-----------------------------------	-----------------------------------

AVAILABLE
IN ADULT &
LADIES ONLY



NAVY/ LT GOLD/ WHITE S30	NAVY/ SCARLET/ WHITE 300	NAVY/VEGAS GOLD/WHITE 312	PURPLE/ BLACK/WHITE 497	ROYAL/ BLACK/WHITE 526	SCARLET/ BLACK/WHITE 952	BLACK/VEGAS GOLD/WHITE 612
-----------------------------------	-----------------------------------	---------------------------------	-------------------------------	------------------------------	--------------------------------	----------------------------------



LADIES FIT

TRACTION PANT

229132	Adult	S-3XL	MSRP 46.80
229232	Youth	S-XL	MSRP 43.80
229332	Ladies	XS-2XL	MSRP 46.80

- Combined Flex-Sof™ and Dry-Excel™ Perform create a smooth, lightweight, and sueded polyester knit surface with superior abrasion-resistance
- Micromesh blocking placed along heat zones for ventilation
- Covered elastic waistband with inside drawcord
- Side seam pockets
- Low rise on Ladies'
- Tapered fit



ZIPPERED
HEMS

BLACK/BLACK/WHITE
529



MICROMESH
VENTILATION

LADIES FIT

ZIPPERED
HEMS

NAVY/NAVY/WHITE
U24



Warmth 2/10 **Weight** Light

PREEMINENT JACKET

3300	Adult	S-3XL	MSRP 47.80
3301	Youth	S-L	MSRP 44.80
3302	Ladies	XS-2XL	MSRP 47.80

- 100% lightweight matte woven polyester fabric
- 90% polyester/10% spandex side panels
- Ladies' fit on style 3302
- Heat sealed label
- Raglan sleeves
- Front pockets
- Elastic cuffs



Warmth 2/10 **Weight** Light

PREEMINENT TAPERED PANT

3305	Adult	S-3XL	MSRP 41.70
3306	Youth	S-L	MSRP 38.70
3307	Ladies	XS-2XL	MSRP 41.70

- 100% lightweight matte woven polyester fabric
- 90% polyester/10% spandex side panels side panels
- Ladies' fit on style 3307
- Covered elastic waistband with inside drawcord
- Two back pockets
- tapered leg with zipper on outside lower leg



AVAILABLE IN LADIES ONLY



MORE FROM THE PREEMINENT COLLECTION



3311 Preeminent 1/2 Zip Pullover pg. 416
3313 Preeminent Vest pg. 388
3308 Preeminent Short pg. 275



TWO BACK POCKETS ON ADULT/YOUTH

TEMPLATE SP147



BACK

6702



TEMPLATE SP147LC

6004 PG. 217

COORDINATING HEADWEAR



6702
Glitter Bow
pg. 479

ATHLETE IS WEARING SILVER INSERT



LADIES AERIAL JACKET

229772	Ladies	S-2XL	MSRP 56.60
		Metallic	MSRP 59.60
229972	Girls	S-XL	MSRP 53.60
		Metallic	MSRP 56.60

- Dry-Excel™ Sof-Stretch™ fabric made with 90% polyester/10% spandex
- Metallic Dry-Excel™ Sof-Stretch™ inserts on silver colorways
- Dual inside pockets
- Raglan sleeves
- Front zippered pockets



LADIES AERIAL PANT

229773	Ladies	S-2XL	MSRP 50.10
		Metallic	MSRP 55.10
229973	Girls	S-XL	MSRP 47.10
		Metallic	MSRP 50.10

- Dry-Excel™ Sof-Stretch™ fabric made with 90% polyester/10% spandex
- Metallic Dry-Excel™ Sof-Stretch™ inserts on silver colorways
- Heat sealed label
- Low rise, wide flat waistband for secure fit and comfort
- Zipper on outside lower leg
- Straight leg

METALLICS





SLIM FIT

LADIES AURORA JACKET

7735 Ladies S-2XL MSRP 39.40
7736 Girls S-L MSRP 38.40

- Heavyweight 100% polyester matte brushed tricot
- Slim fit through torso that skims the body
- Front pockets
- Half-elastic cuffs



LADIES AURORA PANT

7737 Ladies S-2XL MSRP 35.10
7738 Girls S-L MSRP 34.10

- Heavyweight 100% polyester matte brushed tricot
- Slim fit through thigh opens up to a moderate flare at the knee
- Low rise, wide flat waistband for secure fit and comfort
- Zipper on outside lower leg

SLIM FIT



BLACK/
WHITE/
METALLIC
SILVER
354

BLACK/
RED/
METALLIC
SILVER
M11

BLACK/
POWER PINK/
METALLIC
SILVER
M10

RED/
WHITE/
METALLIC
SILVER
M14

ROYAL/
WHITE/
METALLIC
SILVER
M16

NAVY/
WHITE/
METALLIC
SILVER
M12



LADIES FREEDOM JACKET

4810 Ladies S-2XL MSRP 51.10
4811 Girls S-L MSRP 48.10

- Brushed back 90% polyester/10% spandex, 4-way stretch fabric
- Heat sealed label
- Raglan sleeves
- Front seam pockets
- Coordinating pants: 4814/4815, 4820/4821, pg. 425



BLACK/WHITE 420 BLACK/RED 424 BLACK/ORANGE/423 BLACK/GOLD 421 RED/WHITE 400 ROYAL/WHITE 280



NAVY/WHITE 301 PURPLE/WHITE 450 GRAPHITE/WHITE R04 GRAPHITE/POWER PINK 555 POWER PINK/GRAPHITE 824



BACK



THUMBHOLE



LADIES ARABESQUE JACKET

4816 Ladies XS-2XL MSRP 50.00

- Brushed back 90% polyester/10% spandex, 4-way stretch fabric
- Heat sealed label
- Front pouch pockets with roused detailing
- Coordinating pants: 4814/4815, 4820/4821, pg. 425



BLACK 080 GRAPHITE 059 GRAPHITE HEATHER R13 POWER PINK 809



THUMBHOLE





NEW 60/40 FLEECE FULL ZIP HOODIE

5418 Adult XS-5XL MSRP 33.00

- 9 ounce 60% cotton/40% polyester athletic fleece
- Tear away label
- 2-piece jersey lined adjustable hood
- Antique silver eyelets with chunky flat braid drawcord on S-5XL
- Rib-knit cuffs and bottom band
- Coordinating pants: 229548, pg. 451

FULL FRONT DECORATION AVAILABLE



BLACK 080



CARBON HEATHER E83



CHARCOAL HEATHER 017



NAVY 065



TONAL HEATHER FLEECE COLLECTION

LADIES ZOE TONAL HEATHER FULL ZIP HOODIE

5558 Ladies XS-2XL MSRP 46.80

- 100% polyester tonal performance wicking fleece
- 100% polyester contrast mesh hood lining
- Pad print label
- Scuba shaped hood with contrast color mesh lining and heathered tipped drawcord on sizes M-2XL only
- Raglan sleeves
- Front seam pockets
- Dropped tail
- Coordinating pant 5564 pg. 436



BLACK/ GRAPHITE R17

GRAPHITE/ AQUA Y26

GRAPHITE/ CORAL Y27

GRAPHITE/ LIGHT LAVENDER Y28

GRAPHITE/ NAVY U93

GRAPHITE/ POWER PINK 555

GRAPHITE/ RED 194

GRAPHITE/ ROYAL U96

GRAPHITE/ WHITE R04



NEW TRAINER JACKET

5571 Adult XS-3XL MSRP 39.90

- 100% polyester performance wicking fleece
- Set-in sleeves with articulated seaming at elbow
- Shoulder seams roll to front of body
- Front seam pockets
- Rib-knit collar, cuffs and bottom band



NEW PERFORMANCE FLEECE JOGGER

5566 Adult XS-3XL MSRP 31.80

- 100% polyester performance wicking fleece
- Covered elastic waistband with inside drawcord
- Side seam pockets
- Rib-knit bottom cuff
- Articulated seaming at the knees
- Tapered leg



229412
PG. 502





DETERMINATION JACKET

229142	Adult	S-3XL	MSRP 43.50
229242	Youth	S-XL	MSRP 40.50
229342	Ladies	XS-2XL	MSRP 43.50

- Agil-Knit™ is a 100% polyester brushed tricot with a peached finish
- Dual inside pockets
- Front zippered pockets

DETERMINATION PANT

229143	Adult	S-3XL	MSRP 39.50
229243	Youth	S-XL	MSRP 37.00
229343	Ladies	XS-2XL	MSRP 39.50

- Agil-Knit™ is a 100% polyester brushed tricot with a peached finish
- Covered elastic waistband with inside drawcord
- Low rise on Ladies'
- Straight leg

COORDINATING PULLOVER

229192 | 229292 | 229392
Determination Pullover
pg. 408



TEMPLATE T1



LADIES FIT

TEMPLATE S2



SIDE POCKETS



ZIPPERED BOTTOM HEMS



BLACK/BLACK 425

NAVY/NAVY S14



BLACK/ORANGE 423



BLACK/SCARLET 500



BLACK/WHITE 420



BROWN/WHITE 485



FOREST/WHITE 436



GRAPHITE/WHITE R04



MAROON/WHITE 380



NAVY/WHITE 301



ROYAL/WHITE 280



SCARLET/WHITE 408



TOUR DE FORCE JACKET

7722	Adult	S-3XL	MSRP 35.10
7723	Youth	S-L	MSRP 34.10
7724	Ladies	S-2XL	MSRP 35.10

- Heavyweight 100% polyester matte brushed tricot
- Raglan sleeves
- Front pockets
- Half elastic cuffs
- Coordinating pants 7731/7732, 7733, pg. 425



BLACK/
BLACK/
WHITE
529

BLACK/
LIME/
WHITE
113

BLACK/
POWER
YELLOW/
WHITE
482

RED/
BLACK/
WHITE
110

ROYAL/
BLACK/
WHITE
526



NAVY/
BLACK/
WHITE
311

ORANGE/
BLACK/
WHITE
322

MAROON/
BLACK/
WHITE
524

PURPLE/
BLACK/
WHITE
497

DARK
GREEN/
BLACK/
WHITE
520



LADIES FIT

SOLID BRUSHED TRICOT PANT

7726	Adult	S-3XL	MSRP 31.90
7727	Youth	S-L	MSRP 30.90
7728	Ladies	S-2XL	MSRP 31.90

- Heavyweight 100% polyester matte brushed tricot
- Covered elastic waistband with inside drawcord
- Side seam pockets
- Zipper on outside lower leg
- Coordinating tapered leg pants: 7731/7732/7733, pg. 425



BLACK
080



BACK YOKE



LADIES FIT



BLACK/
GOLD
421

BLACK/
ORANGE
423

BLACK/
RED
424

BLACK/
VEGAS
GOLD
255

BLACK/
WHITE
420



DARK
GREEN/
WHITE
438

GRAPHITE/
WHITE
R04

KELLY/
WHITE
340

MAROON/
WHITE
380

NAVY/
VEGAS
GOLD
256



NAVY/
WHITE
301

PURPLE/
WHITE
450

RED/
WHITE
400

ROYAL/
WHITE
280

MEDALIST JACKET 2.0

4395	Adult	S-3XL	MSRP 31.90
4396	Youth	XS-L	MSRP 30.90
4397	Ladies	XS-2XL	MSRP 31.90

- Heavyweight 100% polyester matte brushed tricot
- Ladies' fit on style 4397
- Heat sealed label
- Front seam pockets

MEDALIST PANT 2.0

7760	Adult	S-3XL	MSRP 29.80
7761	Youth	XS-L	MSRP 28.80
7762	Ladies	XS-2XL	MSRP 29.80

- Heavyweight 100% polyester matte brushed tricot
- Ladies' fit on style 7762
- Heat sealed label
- Covered elastic waistband with inside drawcord
- Side seam pockets
- Zipper on outside lower leg

COORDINATING PULLOVER



BACK YOKE



4386 | 4387 | 4388
Medalist 2.0 Pullover
pg. 407



4395

7760



4397

7762



4396

7761

AVAILABLE IN YOUTH

ARTILLERY SHERPA JACKET

229174 Adult S-3XL MSRP 65.20
229374 Ladies XS-2XL MSRP 65.20

- Temp-Sof™ fabric is a colored heather performance fleece with high mechanical stretch, birds-eye flecked surface, and brushed back for added warmth
- Cuddly soft Sherpa lining on hood and body
- Hood with thick drawcord with metal eyelets and tips (on S-2XL only)
- Set-in sleeves
- Dual front pouch pockets
- Chunky rib-knit on cuffs and bottom hem



ARTILLERY COLLECTION



TEMPLATE R2

TEMPLATE I3

LADIES FIT



ASYMMETRICAL ZIPPER FRONT

TEMPLATE TW75 WITH SPACE DYE APPLIQUE



LADIES ARTILLERY ANGLED JACKET

229360 Ladies XS-3XL MSRP 63.10

- Temp-Sof™ fabric is a colored heather performance fleece with high mechanical stretch and a birds-eye flecked surface and brushed back for added warmth
- Spandex bound hood opening with fully lined textured performance mesh
- Raglan sleeves for maximum mobility
- Spandex bound cuff with thumbholes



THUMBHOLES

SIDE POCKETS

MORE FROM THE ARTILLERY COLLECTION



229175
Artillery Hoodie
pg. 427



229375
Ladies Artillery Hoodie
pg. 427



229391
Ladies Artillery Sherpa Vest
pg. 388



229176
Artillery Pullover
pg. 399



223827
Artillery Beanie
pg. 473



223828
pg. 475



223826
pg. 473



CHILL FLEECE ZULL-ZIP JACKET

3540 Adult S-3XL MSRP 30.00

3541 Youth XS-L MSRP 29.00

- 100% polyester Chill Fleece
- Pill-free
- Set-in sleeves
- Front pockets
- Elastic cuffs and bottom
- Coordinating Pullover: 3530, pg. 405



BLACK 080 RED 040 ROYAL 060 NAVY 065



MAROON 045 DARK GREEN 035 CHARCOAL HEATHER 017



COORDINATING POLO

5406
pg. 348



BREAKER COLLECTION



BREAKER JACKET

3625 Adult XS-2XL MSRP 50.00

3627 Ladies XS-2XL MSRP 50.00

- 100% polyester sublimated micropoly upper body featuring Breaker print
- 100% polyester knit interlock lower body
- Hybrid design with micropoly on shoulders, collar, and sleeve for rain and wind resistance combined with knit lower body for warmth
- Heat sealed label
- Extended zipper garage with storm flap
- Cadet collar
- Set-in sleeves
- Two angled welt pockets
- Spandex bound cuff



BACK



BREAKER PRINT



BLACK/SLATE Y50 RED/SLATE V25 ROYAL/SLATE V26 NAVY/SLATE V23 GRAPHITE HEATHER/SLATE X66

LADIES FIT



FORCE FULL ZIP JACKET

222543 Adult S-4XL MSRP 58.80
Select Colors

222743 Ladies XS-2XL MSRP 58.80
Select Colors

- Sof-tec Primo is a Dry-Excel™ 92% polyester/ 8% spandex fabric with 4-way stretch with a peached feel to make it extremely soft
- Mesh lined hood with drawcord
- Raglan sleeves
- Front pockets with hidden valuables pocket
- Spandex bound cuff



COORDINATING PULLOVER



222500 | 222300
pg. 401

AVAILABLE IN ADULT & LADIES



CARBON HEATHER/BLACK F39

CARBON HEATHER/NAVY G26

CARBON HEATHER/ROYAL G27

CARBON HEATHER/SCARLET C99

AVAILABLE IN LADIES ONLY



CARBON HEATHER/MAROON N39

CARBON HEATHER/FOREST N38

CARBON HEATHER/ORANGE C95

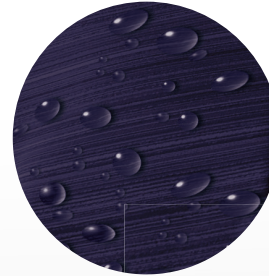
CARBON HEATHER/PURPLE C98

DEVIATE COLLECTION



OUTERWEAR VESTS

STORM DFEND™ TECHNOLOGY



DURABLE WATER RESISTANT FINISH KEEP YOU DRY WHILE KNIT SOFTSHELL BREATHES TO KEEP YOU COMFORTABLE



229715

229515



Warmth **6** / 10 Weight **Mid**

DEVIATE VEST

with Storm Dfend™ Technology

229515	Adult	XS-3XL	MSRP 67.50
229715	Ladies	XS-2XL	MSRP 67.50

- Dry-Excel™ bonded polyester is a scuba bonded fabric featuring a tonal striation
- Ladies' fit on style 229715
- Full front zipper with reflective zipper pull
- Storm flap and zipper garage
- Front zippered pockets
- Dual inside pocket

DROPPED TAIL ON LADIES





ARTILLERY COLLECTION

SHERPA LINING

LADIES ARTILLERY SHERPA VEST

229391 Ladies XS-2XL MSRP 54.40

- Temp-Sof fabric is a colored heather performance fleece with high mechanical stretch and a bird's-eye flecked surface and brushed back for added warmth
- Cuddly soft Sherpa lining on hood and body
- Dual front pouch pockets



ATHLETIC HEATHER 018

BLACK HEATHER U36

NAVY HEATHER U22

ROYAL HEATHER U55

SCARLET HEATHER T20



TEMPLATE G3



PREEMINENT COLLECTION

Warmth

3/10

Weight

Light



PREEMINENT VEST

3313 Adult S-2XL MSRP 43.40
3XL in select colors

- 100% lightweight matte woven polyester fabric
- 100% polyester pinhole mesh lining
- Heat sealed label
- Front pockets
- Coordinating Pant: 3305 | 3306, pg. 421

AVAILABLE IN 3XL



BLACK/ GRAPHITE R17

GRAPHITE/ GRAPHITE 59A

NAVY/ GRAPHITE S21

RED/ GRAPHITE 825

ROYAL/ GRAPHITE S65



3308
PG. 275

Prices subject to change without notice



Warmth **5** / 10 Weight **Light**

ADMIRE VEST

229514 Adult S-3XL MSRP 56.60
229314 Ladies XS-2XL MSRP 56.60

- Ultra-lightweight Aero-Tec™ fabric provides both weather protection and zero noise
- Lightweight quilting for warmth without the bulk
- Decoration friendly quilting lines on front and back
- Micro fleece lined
- Front pockets



MICROFLEECE COLLAR LINING



COORDINATING HEADWEAR



223816
pg. 469



223844
pg. 469



LADIES FIT

DROPPED TAIL ON LADIES



BLACK 080 GRAPHITE 059 NAVY 065



BLACK 080 GRAPHITE 059 NAVY 065 POWER PINK 809 ROYAL 060 SCARLET 083 WHITE 005



Warmth **3**/₁₀ Weight **Light**

CIRCULATE JACKET

229159 Adult S-3XL MSRP 103.40

- Lightweight textured Storm-Bloc™ fabric features our bonded technology - 10,000mm windproof/waterproof surface x 10,000mm breathable back for extreme weather protection
- Concealed adjustable hood with eyelets and concealed cord locks stows when not in use
- Dropped tail
- Front zippered pockets
- Elastic cuffs



BLACK/WHITE
420

CARBON/WHITE
F52

NAVY/WHITE
301

ROYAL/WHITE
280



LEFT CHEST FLAP FOR EASY DECORATION SHOWN WITH TEMPLATE L2

WATERPROOF ZIPPERS/TAPED SEAMS

Warmth **3**/₁₀ Weight **Light**

CIRCULATE PANT

229156 Adult S-3XL MSRP 76.20

- Lightweight textured Storm-Bloc™ fabric features our bonded technology- 10,000 mm windproof/waterproof surface x 10,000 mm breathable back for extreme weather protection
- Covered elastic waistband with inside drawcord
- Pass through front opening with hidden snaps
- Back pocket with zipper
- Zippered leg openings with adjustable hook and loop fastener
- Articulated knees for flexibility



BLACK
080

CARBON
196



BUILT TO BE WORN WITH PANTS UNDERNEATH



Warmth **2** / 10

Weight **Light**



CLEAR RAIN JACKET

3160	Adult	S-2XL	MSRP 17.50
3161	Youth	S-L	MSRP 16.50

- 100% PVC
- Unisex fit
- Front zipper with outside storm flap and snaps at cuff
- Raglan sleeves with adjustable snap closures
- Front pockets with flaps and snap closure

CLEAR
100

DECORATION
AVAILABLE
ON PVC



AIR MESH VENTED BACK
FOR BREATHABILITY



DETACHABLE
HOOD

6004
PG. 217

9141/9146
PG. 211





DEVIATE COLLECTION



DURABLE WATER RESISTANT FINISH KEEPS YOU DRY WHILE KNIT SOFTSHELL BREATHES TO KEEP YOU COMFORTABLE



Warmth **6** / 10 Weight **Mid**

DEVIATE PULLOVER

with Storm Dfend™ Technology



229541	Adult	XS-3XL	MSRP 72.90
229741	Ladies	XS-2XL	MSRP 72.90

- Dry-Excel™ bonded polyester is a scuba bonded fabric featuring a tonal striation
- Poly/spandex storm cuffs for weather protection
- Raglan sleeves
- Front zippered pockets
- Zipper garage and storm flap

REFLECTIVE ZIPPER PULL



TEMPLATE X3



LADIES FIT

ONLY AVAILABLE IN ADULT



BLACK 080	CARBON J96	NAVY 065	ROYAL 060	SCARLET 083	WHITE 005	FOREST 038	MAROON 045
-----------	------------	----------	-----------	-------------	-----------	------------	------------

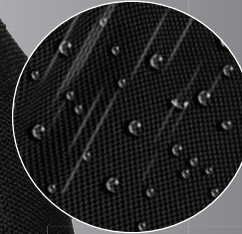
MORE FROM THE **DEVIATE** COLLECTION



229539 | 229739
Deviante Jacket
pg. 359



229515 | 229715
Deviante Vest
pg. 387



DURABLE WATER RESISTANT FINISH KEEPS YOU DRY WHILE KNIT SOFTSHELL BREATHES TO KEEP YOU COMFORTABLE



Warmth **7** / 10 Weight **Mid**

229736

INVERT 1/2 ZIP PULLOVER

with Storm Dfend™ Technology

229536 Adult XS-3XL MSRP 75.30
229736 Ladies XS-2XL MSRP 75.30

- Sweater knit bonded to microfleece lining for maximum warmth
- Wik-Sof™ Dry-Excel™ at sides and sleeves on Adult
- Ladies' fit on style 229736
- Stretch woven zipper garage and storm flap

OMBRE ZIPPER

229536



ZIPPERED POCKETS



BLACK 080

CARBON J96

NAVY 065

ROYAL 060

SCARLET 083

MORE FROM THE **INVERT** COLLECTION



229540
Invert Jacket
pg. 360



REFLECTIVE ZIPPER GARAGE

3D TEXTURED BRUSHED BACK FABRIC IS ENGINEERED FOR BREATHABLE WARMTH



3D REGULATE LIGHTWEIGHT PULLOVER

222553 Adult XS-3XL MSRP 57.00
4XL in select colors

- 3D Regulate lightweight knit, 94% polyester/6% spandex tonal heathered brushed Waffle textured back for controlled warmth and wicking
- 3D Regulate knit fabric rolls over to the front of collar for softness and comfort
- Raglan sleeves for maximum mobility
- 100% lightweight matte woven polyester zippered valuables pocket on wearers right side

222753 Ladies XS-2XL MSRP 57.00
3XL in select colors

- 3D Regulate knit fabric rolls over to the front of crossover hood for softness and comfort
- Ladies' fit
- Contoured bottom





COLLECTION
CONTROL YOUR COMFORT

OUTERWEAR
PULLOVERS



229511
PG. 279



MEDIA PORT POCKET FOR
INTERIOR EAR BUD CORD



THUMBHOLES



221399
PG. 268





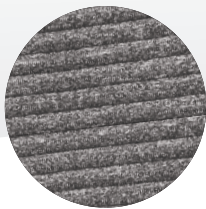
COLLECTION
CONTROL YOUR COMFORT



NEW 3D REGULATE PULLOVER

229594 Adult XS-3XL MSRP 58.50
229794 Ladies XS-2XL MSRP 58.50

- 100% polyester heathered knit with seamless quilted insulation for added warmth
- Wik-Sof™ performance fleece lower body
- Half-zip pullover style with storm flap and zipper garage
- Front zippered pockets



3D SEAMLESS INSULATED KNIT TRAPS HEAT TO KEEP YOU WARM WHILE 3D CHANNELS RELEASE EXCESS HEAT TO KEEP YOU COMFORTABLE



PLEATED BACK DETAIL ON LADIES



Warmth **6** / 10 Weight **Mid**

HURRICANE JACKET

229064 Adult S-3XL MSRP 65.20

- Micro-Cord™ shell fabric has a textured dobby polyester surface and medium weight to provide durable weather barrier
- Heather grey jersey and nylon lining
- 3 Piece adjustable hood with concealed cord locks
- Raglan sleeves
- Half-elastic cuffs
- Open bottom hem with adjustable elastic hidden drawcord



BLACK/ ORANGE 423
 BLACK/ SCARLET 500
 BLACK/ WHITE 420
 DK GREEN/ WHITE 438



MAROON/ WHITE 380
 NAVY/ WHITE 301
 ROYAL/ WHITE 280
 SCARLET/ WHITE 408



Warmth **6** / 10 Weight **Light**

PACER PANT

229056 Adult S-3XL MSRP 48.90

229256 Youth S-XL MSRP 45.90

- Micro-Cord woven polyester fabric with a raised, ribbed texture
- Mesh lined upper leg and nylon lining lower leg
- Front pockets
- Back pockets with zipper

AVAILABLE IN ADULT ONLY



NAVY 065
 ROYAL 060
 SCARLET 083
 BLACK 080
 CARBON 096





Fadeaway design



Boomerang design



All Over design



Digit design

7 designs available



FLEECE ¼ ZIP

228142	Adult	S-3XL	MSRP 85.00
228142	Youth	S-XL	MSRP 83.00

- Dry-Excel™ 100% polyester performance wicking fleece and brushed back for added warmth
- Pad print label
- Quarter zip pullover style
- Set-in sleeves
- Open bottom

ARTILLERY COLLECTION



ARTILLERY PULLOVER

229176 Adult XS-3XL MSRP 57.70

- Temp-Sof fabric is a colored heather performance fleece with high mechanical stretch and a birds-eye flecked surface and brushed back for added warmth
- Spandex bound cuffs and bottom hem
- Pouch pocket with media port

TEMPLATE
LO1



BLACK HEATHER U36

FOREST HEATHER U41

MAROON HEATHER T09

NAVY HEATHER U22

ROYAL HEATHER U55

SCARLET HEATHER T20



COORDINATING HOODIE

222534
pg. 427

COMPLEX PRINT



TEMPLATE TW74



BACK

COMPLEX COLLECTION



CONTRAST
1/4 ZIP DETAIL

TEMPLATE X2



FRONT POUCH POCKET

COMPLEX PULLOVER



222535 Adult XS-3XL MSRP 56.60

- Dry-Excel™ 100% polyester performance wicking fleece
- Inserts features complex print
- Roller printed to reduce chance of dye migration
- Tagless label
- Raglan sleeves
- Coordinating pants: Adult 229171, pg. 432



CARBON/
BLACK/
WHITE
H82

CARBON/
LIGHT GOLD/
WHITE
H87

CARBON/
NAVY/
WHITE
H83

CARBON/
ORANGE/
WHITE
H86

CARBON/
ROYAL/
WHITE
H84

CARBON/
SCARLET/
WHITE
H85

LADIES AFFIRM PULLOVER



229358 Ladies XS-2XL MSRP 58.80

- Dry-Excel™ 4-Way Stretch performance fleece is a polyester/spandex with a brushed back and high mechanical stretch
- Sof-Tec Primo sleeves and collar inserts
- Raglan sleeves
- Princess seams with hidden zippered valuable pocket
- Dropped tail

TEMPLATE ET26



DROPPED TAIL

TEMPLATE R3

ASYMMETRICAL
1/4 ZIP NECK



THUMBHOLE AND
MITTEN OPTION



BLACK/
CARBON
HEATHER
H70

BRIGHT
BLUE/
CARBON
HEATHER
H77

BRIGHT
YELLOW/
CARBON
HEATHER
H74

FOREST/
CARBON
HEATHER
H81

LIME/
CARBON
HEATHER
H76

MAROON/
CARBON
HEATHER
H79



NAVY/
CARBON
HEATHER
H71

ORANGE/
CARBON
HEATHER
H78

POWER PINK/
CARBON
HEATHER
H75

PURPLE/
CARBON
HEATHER
H80

ROYAL/
CARBON
HEATHER
H73

SCARLET
CARBON
HEATHER
H72



FORCE TRAINING TOP



222500 Adult S-3XL MSRP 56.10
4XL in select colors

222300 Ladies XS-2XL MSRP 56.10

- Sof-tec Primo is a Dry-Excel™ 92% polyester/8% spandex fabric with 4-way stretch with a peached feel to make it extremely soft
- Heat sealed label



BACK



COORDINATING FULL ZIP JACKET

222543 | 222743
pg. 386



BACK

AVAILABLE IN ADULT 4XL



CARBON HEATHER/ GRAPHITE H15



CARBON HEATHER/ BLACK F39



CARBON HEATHER/ BRIGHT YELLOW C96



CARBON HEATHER/ LIME C97



CARBON HEATHER/ NAVY G26



CARBON HEATHER/ ORANGE C95



CARBON HEATHER/ PURPLE C98



CARBON HEATHER/ ROYAL G27



CARBON HEATHER/ SCARLET C99

AVAILABLE IN LADIES ONLY



CARBON HEATHER/ PINK C94



RECORD SETTER PULLOVER

3620 Adult XS-3XL MSRP 37.40
3622 Ladies XS-2XL MSRP 37.40

- 100% polyester knit interlock
- Heat sealed label
- Slim fit through torso that skims the body on Ladies
- Zipper garage with storm flap
- Wearer's right side seam hidden possession pocket
- Raglan sleeves



HIDDEN POSSESSION POCKET



SPANDEX BOUND CUFFS

LADIES FIT



DROPPED TAIL ON LADIES



SLATE/BLACK V68 SLATE/RED V29 SLATE/ROYAL Y43 SLATE/NAVY V28 SLATE/ORANGE V69 SLATE/MAROON Y37



SLATE/PURPLE 69N SLATE/DARK GREEN Y38 SLATE/LIME Y42 SLATE/GRAPHITE HEATHER V47 SLATE/POWER BLUE HEATHER V48 SLATE/POWER PINK HEATHER V49

AVAILABLE IN LADIES

LADIES FREEDOM PULLOVER



4812 Ladies XS-2XL MSRP 51.10

- Brushed back 90% polyester/10% spandex, 4-way stretch woven fabric
- Heat sealed label
- Scuba hood with contrast color lining
- Raglan sleeves
- Coordinating pants 4814/4815, 4820/4821, pg. 425



THUMBHOLE



BACK



THUMBHOLES



BLACK/GRAPHITE HEATHER R27 RED/BLACK 407 NAVY/GRAPHITE HEATHER S22 PURPLE/GRAPHITE HEATHER X38



GRAPHITE HEATHER/LIME X42 GRAPHITE HEATHER/POWER YELLOW X46 GRAPHITE HEATHER/POWER PINK X45 GRAPHITE HEATHER/POWER BLUE X44



TEMPLATE E002

FLUX 1/2 ZIP PULLOVER



222502 Adult XS-3XL MSRP 50.20

- Dry-Excel™ 88% polyester/12% spandex knit
- Tagless label
- Low profile collar
- Metallic ink print on sleeves
- Raglan sleeves



BLACK/ LT GOLD R16 BLACK/ ORANGE 423 BLACK/ SCARLET 500 BLACK/ WHITE 420 CARBON/ BLACK E84 MAROON/ BLACK 388



NAVY/ SCARLET S20 NAVY/ LT GOLD S28 NAVY/ WHITE 301 ROYAL/ BLACK 289 SCARLET/ BLACK 406



MORE FROM THE FLUX COLLECTION



222502
Flux 1/2 Zip Pullover
pg. 401



222506 | 222606
Flux Shirt Short Sleeve
pg. 241



222507 | 222607
Flux Shirt Long Sleeve
pg. 229



222513 | 222713
Flux Polo
pg. 341



229570 | 229670 | 229770
Flux Tapered Leg Pant
pg. 422



229569 | 229669 | 229769
Flux Straight Leg Pant
pg. 422



WICKING FLEECE PULLOVER

5507	Adult	S-5XL	MSRP 32.80
5508	Youth	S-L	MSRP 31.80
5509	Ladies	XS-3XL	MSRP 32.80

- 100% polyester performance wicking fleece
- Tear away label



5507

5509

CORE color choice



ATHLETIC GREY 009	BLACK 080	CARDINAL J36	COL. BLUE 089	DARK GREEN 035
----------------------	--------------	-----------------	------------------	-------------------



GOLD 025	GRAPHITE 059	KELLY 030	LIME 096	MAROON 045
-------------	-----------------	--------------	-------------	---------------



NAVY 065	ORANGE 029	POWER BLUE 812	POWER PINK 809	POWER YELLOW 810
-------------	---------------	-------------------	-------------------	---------------------



PURPLE 050	RED 040	ROYAL 060	VEGAS GOLD 023	WHITE 005
---------------	------------	--------------	-------------------	--------------



MORE CORE COLOR CHOICE STYLES

20+ COLORS



2790 | 2791
2792 | 2793
Attain Wicking Shirt
pg. 254



1905
Cinch Bag
pg. 501



6816
Pom Beanie
pg. 472



5414 | 5415
60/40 Hoody
pg. 450



790 | 791
Wicking T-Shirt
pg. 255



5505 | 5506
Wicking Fleece
Hooded Sweatshirt
pg. 433



STOKED PULLOVER

2910 Adult XS-3XL MSRP 42.00
2911 Ladies XS-2XL MSRP 42.00

- 100% polyester tonal performance wicking fleece with mesh lined collar
- Pad print label



LADIES
FIT

CHILL FLEECE HALF-ZIP PULLOVER

3530 Adult S-3XL MSRP 27.90
3531 Youth XS-L MSRP 26.90

- 100% polyester Chill Fleece
- Pill-free
- Front pockets
- Elastic cuffs and bottom



COORDINATING
FULL-ZIP JACKET



3540 | 3541
pg. 385



TENACITY PULLOVER



229124 Adult XS-3XL MSRP 50.10
229324 Ladies XS-2XL MSRP 50.10

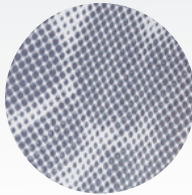
- Agil-Knit™ is a 100% polyester brushed matte tricot with a peached finish
- Infrared dot printed Dry-Excel™ pinhole micromesh inserts placed along heat zones for breathability
- Tagless label
- Raglan sleeves



BLACK/WHITE/WHITE PRINT D89
 FOREST/WHITE/WHITE PRINT D90
 GRAPHITE/WHITE/WHITE PRINT D91
 MAROON/WHITE/WHITE PRINT D92



NAVY/WHITE/WHITE PRINT D93
 PURPLE/WHITE/WHITE PRINT D94
 ROYAL/WHITE/WHITE PRINT D95
 SCARLET/WHITE/WHITE PRINT D96



INFRARED DOT PRINT INSERTS



DETERMINATION COLLECTION



DETERMINATION PANT

229143 Adult S-3XL MSRP 39.50
229243 Youth S-XL MSRP 37.00
229343 Ladies XS-2XL MSRP 39.50

- Agil-Knit™ is a 100% polyester brushed tricot with a peached finish
- Covered elastic waistband with inside drawcord
- Side seam pockets
- Low rise on Ladies'
- Straight leg



BLACK/ORANGE 423
 BLACK/SCARLET 500
 BLACK/WHITE 420
 BROWN/WHITE 485
 FOREST/WHITE 436
 GRAPHITE/WHITE R04
 MAROON/WHITE 380
 NAVY/WHITE 301
 ROYAL/WHITE 280
 SCARLET/WHITE 408





TRANSFORM PULLOVER

229037	Adult	S-3XL	MSRP 56.60
229237	Youth	S-XL	MSRP 53.60
229337	Ladies	XS-2XL	MSRP 56.60

- Flex-Sof™ smooth, lightweight, polyester knit with superior abrasion-resistance & high mechanical stretch
- Dry-Excel™ pinhole micromesh blocking placed along heat zones for ventilation
- Set-in sleeves
- Front zippered pockets
- Coordinating pants 229036/229236, 229132/229232, 229332, 229336, pg. 423



DROPPED TAIL



BLACK/ LT GOLD/ WHITE R21
 BLACK/ ORANGE/ WHITE 611
 BLACK/ SCARLET/ WHITE R20
 BLACK/ VEGAS GOLD/ WHITE 612
 FOREST/ BLACK/ WHITE 148



MAROON/ BLACK/ WHITE 524
 NAVY/ LT GOLD/ WHITE S30
 NAVY/ SCARLET/ WHITE 300
 NAVY/ VEGAS GOLD/ WHITE 312
 PURPLE/ BLACK/ WHITE 497
 ROYAL/ BLACK/ WHITE 526
 SCARLET/ BLACK/ WHITE 952



TEMPLATE S2

TEMPLATE U2

SPANDEX-BAND CUFFS

LADIES FIT



VIGOR PANT

229036	Adult	S-3XL	MSRP 46.80
229236	Youth	S-XL	MSRP 43.80
229336	Ladies	XS-2XL	MSRP 46.80

- Flex-Sof™ fabric, this smooth, lightweight, polyester knit surface has superior abrasion-resistance
- Dry-Excel™ Perform pinhole micromesh blocking placed along heat zones for ventilation
- Covered elastic waistband with inside drawcord
- Side seam pockets
- Straight leg



MICROMESH BLOCKING FOR VENTILATION

LADIES FIT

ZIPPERED HEMS

BLACK/BLACK/WHITE 529

ZIPPERED HEMS

NAVY/NAVY/WHITE U24

**COORDINATING
JACKET**

229142 | 229242 | 229342
Determination Jacket
pg. 380



DETERMINATION COLLECTION



DETERMINATION PULLOVER

229192 Adult S-3XL MSRP 42.50
229292 Youth S-XL MSRP 39.50
229392 Ladies XS-2XL MSRP 42.50

- Agil-Knit™ is a 100% polyester brushed matte tricot with a peached finish
- Raglan sleeves for maximum mobility
- Front pouch pocket
- Banded cuff and hem



BLACK/
ORANGE
423

BLACK/
SCARLET
500

BLACK/
WHITE
420

FOREST/
WHITE
436

GRAPHITE/
WHITE
R04

AVAILABLE IN
ADULT, YOUTH ONLY



MAROON/
WHITE
380

NAVY/
WHITE
301

ROYAL/
WHITE
280

SCARLET/
WHITE
408



BROWN/
WHITE
485



TEMPLATE M3



TEMPLATE O3

LADIES FIT

DETERMINATION PANT

229143 Adult S-3XL MSRP 39.50
229243 Youth S-XL MSRP 37.00
229343 Ladies XS-2XL MSRP 39.50

- Agil-Knit™ is a 100% polyester brushed tricot with a peached finish
- Covered elastic waistband with inside drawcord
- Side seam pockets
- Low rise on Ladies'
- Straight leg



BLACK/
ORANGE
423

BLACK/
SCARLET
500

BLACK/
WHITE
420

BROWN/
WHITE
485

FOREST/
WHITE
436

GRAPHITE/
WHITE
R04

MAROON/
WHITE
380

NAVY/
WHITE
301

ROYAL/
WHITE
280

SCARLET/
WHITE
408



ZIPPERED BOTTOM HEMS



LADIES
FIT



MEDALIST 2.0 PULLOVER

4386	Adult	S-3XL	MSRP 31.30
4387	Youth	S-L	MSRP 30.30
4388	Ladies	XS-2XL	MSRP 31.30

- Heavyweight 100% polyester matte brushed tricot
- Heat sealed label
- Front pouch pocket
- Coordinating pants 7760/7761, 7762, pg. 424



AVAILABLE IN YOUTH

LADIES FIT



MORE FROM THE MEDALIST COLLECTION



4395 | 4396 | 4397
Mealist Jacket 2.0
pg. 382

7760 | 7761 | 7762
Mealist Pant 2.0
pg. 382



BACK



Warmth 4/10 Weight Light

POTENTIAL PULLOVER

229005 Adult S-3XL MSRP 71.70

- Hybrid design, Aero-Tec™ upper body warmth with the Dry-Excel™ Wik-Sof™ lower body
- Micromesh lining
- Adjustable lightweight hood with reflective eyelets and concealed cord locks
- Contoured cuffs
- Open bottom with adjustable elastic hidden drawcord



BLACK/
GRAPHITE/
WHITE
489

FOREST/
GRAPHITE/
WHITE
W19

MAROON/
GRAPHITE/
WHITE
393

NAVY/
GRAPHITE/
WHITE
371

PURPLE/
GRAPHITE/
WHITE
647

SCARLET/
GRAPHITE/
WHITE
W91

ULTRA-LIGHTWEIGHT
AERO-TEC™
UPPER BODY

TEMPLATE
E2

COMFORTABLE WIK-SOF™
LOWER BODY

FRONT ZIPPERED POCKETS

POTENTIAL
VOLLEYBALL

RAIDER COLLECTION



Warmth 2/10 Weight Ultra Light

PITCH PULLOVER

229194 Adult S-3XL MSRP 63.10

- Ultra-lightweight Aero-Tec™ fabric provides both weather protection and zero noise, without the bulk
- Tech print pattern detail on lower sleeve and inserts
- Spandex bound cuff
- Adjustable bottom hem with hidden shockcord closure in right pocket
- Coordinating pants: 226011/226211, pg. 420
- Dropped tail



ZIP-OFF
SLEEVES

HIDDEN
ZIPPER

TEMPLATE E3

WEST
BASEBALL

SIDE
POCKETS



CARBON
PRINT/
BLACK
H05

CARBON
PRINT/
NAVY
H03

CARBON
PRINT/
ROYAL
H02

CARBON
PRINT/
SCARLET
H01

CARBON
PRINT/
WHITE
H04



Warmth **4** / 10 Weight **Light**

WIZARD PULLOVER

229016	Adult	S-3XL	MSRP 57.70
229216	Youth	S-XL	MSRP 54.70

- Micron™ polyester is a lightweight, wind/water resistant fabric
- Micromesh lined nylon body & hood
- Adjustable mesh lined hood with eyelets and concealed cord locks
- Front zippered pockets
- Half-elastic cuffs
- Open bottom with adjustable elastic hidden drawcord
- Coordinating pants 229095/229295 pg. 420



ADJUSTABLE VENT FOR DECORATION ACCESS

DROPPED TAIL



BLACK/
LIGHT GOLD
R16

BLACK/
ORANGE
423

BLACK/
SCARLET
500

BLACK/
WHITE
420

MAROON/
WHITE
380

NAVY/
LIGHT
GOLD
S28

NAVY/
WHITE
301

ROYAL/
WHITE
280

SCARLET/
WHITE
408

CARBON/
WHITE
F52

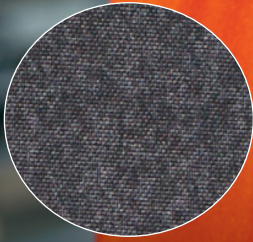
DARK
GREEN/
WHITE
438



RAIDER COLLECTION

HOLLOWAY

TECH PRINT



SILICONE WELDED, LASER CUT SLEEVE POCKET WITH MEDIA PORT



¼ ZIP NECKLINE

TEMPLATE Q3



Warmth 2/10

Weight Ultra Light

FRONT POUCH POCKET

SPANDEX-BOUND CUFFS



RAIDER PULLOVER

229155 Adult XS-3XL MSRP 54.40
4XL in select colors

229655 Youth S-L MSRP 51.40
Select Colors

- Ultra-lightweight Aero-Tec™ fabric provides both weather protection and zero noise, without the bulk
- Coordinating pants: 226011/226211, pg. 420

AVAILABLE IN ADULT 4XL & YOUTH

AVAILABLE IN ADULT ONLY



CARBON PRINT/
BLACK
H05

CARBON PRINT/
GRAPHITE
H60

CARBON PRINT/
NAVY
H03

CARBON PRINT/
ROYAL
H02

CARBON PRINT/
SCARLET
H01

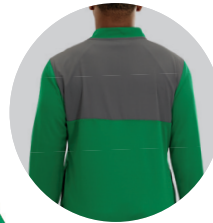
CARBON PRINT/
FOREST
H69

CARBON PRINT/
MAROON
H06

CARBON PRINT/
ORANGE
H07

CARBON PRINT/
PURPLE
H68

CARBON PRINT/
WHITE
H04



BACK

NOW OFFERING REFLECTIVE HEAT TRANSFER DECORATIONS



SIDE POCKETS

Warmth 5/10 **Weight** Light

WELD HYBRID PULLOVER

229596 Adult S-3XL MSRP 57.70
4XL in select colors

229696 Youth S-XL MSRP 54.70

- 90% polyester/10% spandex, 4-way stretch woven fabric front panel and back yoke

- Flex-Sof™ smooth, lightweight, polyester knit with superior abrasion-resistance & high mechanical stretch on lower body, sleeves and back
- Low profile collar
- Spandex bound cuff
- Coordinating pant 229544, pg. 421

AVAILABLE IN ADULT 4XL & YOUTH



MORE FROM THE WELD COLLECTION



229543
Weld Full Zip Jacket
pg. 370



229544
Weld Pant
pg. 370



229743
Ladies Weld Jacket
pg. 371



229799
Ladies Weld Jogger
pg. 371



Warmth **2**/₁₀ Weight **Ultra Light**

EQUALIZER PULLOVER

222485 Adult S-3XL MSRP 45.80

222285 Youth S-XL MSRP 42.80

- Ultra-lightweight Aero-Tec™ fabric provides both weather protection and zero noise, without the bulk
- Dry-Excel™ Pin-Dot performance knit, polyester with wicking and soil-release properties
- Raglan sleeves
- Open bottom with shockcord at bottom on Adult



BLACK/BLACK 425
 BLACK/ORANGE 423
 BLACK/SCARLET 500
 BLACK/WHITE 420
 FOREST/WHITE 436



GRAPHITE/WHITE R04
 NAVY/WHITE 301
 ROYAL/WHITE 280
 SCARLET/WHITE 408



BACK



TEMPLATE H3

FRONT POCKET

BREATHABLE MESH INSERT

Warmth **5**/₁₀ Weight **Light**

QUANTUM SHORT SLEEVE PULLOVER

3788 Adult XS-4XL MSRP 46.60

3789 Youth S-L MSRP 43.60
in select colors

- 90% polyester/10% spandex 4-way stretch woven fabric
- Raglan sleeves
- Front pockets



OPEN BOTTOM WITH ADJUSTABLE ELASTIC DRAWCORD HIDDEN IN POCKET

AVAILABLE IN ADULT SIZES ONLY



ROYAL/GOLD/WHITE 613
 NAVY/GOLD/WHITE 516
 PURPLE/GRAPHITE/WHITE 647
 GRAPHITE/BLACK/WHITE 195
 BLACK/RED/WHITE 527
 BLACK/ORANGE/WHITE 611



BLACK/GOLD/WHITE 418
 BLACK/GRAPHITE/WHITE 489
 RED/GRAPHITE/WHITE 397
 ROYAL/GRAPHITE/WHITE 648
 NAVY/RED/WHITE 518
 NAVY/GRAPHITE/WHITE 371





Warmth **2** / 10 Weight **Ultra Light**

RAIDER PULLOVER SHORT SLEEVE

229545 Adult S-3XL MSRP 50.10
4XL in select colors
229645 Youth S-XL MSRP 47.10
Select Colors

- Ultra-lightweight Aero-Tec™ fabric provides both weather protection and zero noise, without the bulk
- Tech print pattern detail on neck and sleeves



BACK



AVAILABLE IN ADULT 4X & YOUTH



CARBON PRINT/BLACK H05

CARBON PRINT/NAVY H03

CARBON PRINT/ROYAL H02

CARBON PRINT/SCARLET H01

CARBON PRINT/WHITE H04

AVAILABLE IN ADULT ONLY



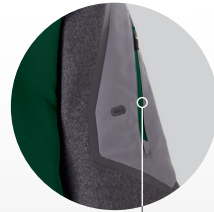
CARBON PRINT/FOREST H69

CARBON PRINT/GRAPHITE H60

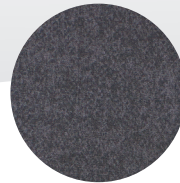
CARBON PRINT/MAROON H06

CARBON PRINT/ORANGE H07

CARBON PRINT/PURPLE H68



SILICONE WELDED, LASER CUT SLEEVE POCKET WITH MEDIA PORT



TECH PRINT

Warmth **2** / 10 Weight **Ultra Light**

RAIDER PANT

226011 Adult S-3XL MSRP 45.80
226211 Youth S-XL MSRP 42.80

- Ultra-lightweight Aero-Tec™ fabric with tech print pattern provides both weather protection and zero noise, without the bulk
- Side seam pockets
- Covered back pocket with zipper
- Zipper on outside lower leg
- Straight leg



CARBON PRINT L99



Warmth **2** / 10 Weight **Light**

PREEMINENT COLLECTION



PREEMINENT 1/2 ZIP PULLOVER

3311 Adult S-3XL MSRP 45.70

- 100% lightweight matte woven polyester fabric
- Heat sealed label
- Raglan sleeves
- Front pockets
- Spandex bound cuffs
- Dropped tail
- Coordinating pants 3305/3306, 3307, pg. 421



MEDIA POCKET



BLACK/
GRAPHITE
R17

DARK GREEN/
GRAPHITE
821

GRAPHITE/
GRAPHITE
59A

MAROON/
GRAPHITE
D45

NAVY/
GRAPHITE
S21



ORANGE/
GRAPHITE
D43

RED/
GRAPHITE
825

ROYAL/
GRAPHITE
S65

WHITE/
GRAPHITE
751

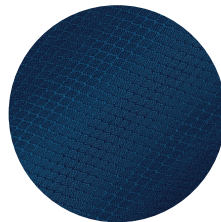
Warmth **4** / 10 Weight **Light**



DRIVE PULLOVER

3720 Adult XS-3XL MSRP 45.70

- Outer shell of 100% polyester diamond tech
- Lined with 100% polyester taffeta
- Front pockets
- Half-elastic cuffs



DIAMOND TECH



BLACK/
GRAPHITE/
WHITE
489

RED/
GRAPHITE/
WHITE
397

ROYAL/
GRAPHITE/
WHITE
648

MAROON/
GRAPHITE/
WHITE
393



PURPLE/
GRAPHITE/
WHITE
647

DARK
GREEN/
GRAPHITE/
WHITE
646

GRAPHITE/
BLACK/
WHITE
195



Warmth **5**/₁₀ Weight **Light**

BIONIC QUARTER ZIP PULLOVER

229027 Adult S-3XL MSRP 48.90
4XL in select colors

229227 Youth S-XL MSRP 45.90

- Micron™ polyester is a lightweight, wind/water resistant fabric
- Sleeves and arms are embossed with the Screenmesh print
- Jersey and taffeta lining for added warmth
- Front pockets
- Elastic cuffs
- Open bottom with adjustable elastic hidden drawcord on Adult only
- Coordinating pants 229095/229295, pg. 420



TEMPLATE EB13

FRONT POCKETS

ELASTIC CUFFS

AVAILABLE IN ADULT 4XL



CARBON/BLACK E84

CARBON/NAVY E82

CARBON/ROYAL F63

CARBON/SCARLET F68



CARBON/DK GREEN C90

CARBON/KELLY C92

CARBON/LT GOLD C91

CARBON/MAROON F55



CARBON/ORANGE F57

CARBON/PURPLE F53

CARBON/UNIVERSITY BLUE F40



222412 | 222212 | 222312
Bionic Jacket
pg. 368



229095 | 229295 | 229395
Sable Pant
pg. 368



229017 | 229217
Bionic Hooded Jacket
pg. 354



229019
Bionic Windshirt
pg. 419

MORE FROM THE BIONIC COLLECTION



Warmth 4/10 **Weight** Light

MICRO POLY WINDSHIRT/LINED

3415 Adult S-4XL MSRP 23.50

- Outer shell of 100% micro polyester
- Lined with 100% polyester taffeta
- Rib-knit V-neck collar, cuffs and bottom band
- Side seam pockets



BLACK
080

RED
040

ROYAL
060

NAVY
065



Warmth 4/10 **Weight** Light

PROMENTUM PULLOVER

3417 Adult S-4XL MSRP 35.10

- Outer shell of 100% matte micro polyester
- Lined with 100% polyester taffeta
- Rib knit V-neck collar
- Raglan sleeves
- Side seam pockets
- Half elastic cuffs
- Open bottom with elastic at side seam



BACK



BLACK/
WHITE
420

BLACK/
GOLD
421

RED/
BLACK
407

ROYAL/
WHITE
280

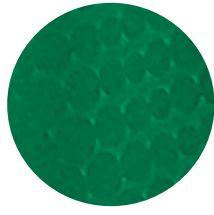


NAVY/
RED
307

NAVY/
GOLD
302

NAVY/
WHITE
301





EMBOSSED PATTERN



TEMPLATE TW70



Warmth **5** / 10 Weight **Light**

BIONIC WINDSHIRT

229019 Adult S-3XL MSRP 46.80

- Micron™ polyester is a lightweight, wind/water resistant fabric
- Sleeves and arms are embossed with the Screenmesh print
- Jersey and taffeta lining for added warmth
- Raglan sleeves
- Front pockets
- Elastic cuffs
- Open bottom with adjustable elastic hidden drawcord on Adult only
- Coordinating pants 229095/229295, pg. 420



BLACK/ LT GOLD R16

BLACK/ ORANGE 423

BLACK/ SCARLET 500

BLACK/ VEGAS GOLD 255

BLACK/ WHITE 420

CARBON/ BLACK E84

CARDINAL/ WHITE 409

DK GREEN/ WHITE 438

KELLY/ WHITE 340



MAROON/ WHITE 380

NAVY/ LT GOLD S28

NAVY/ SCARLET S20

NAVY/ VEGAS GOLD 256

NAVY/ WHITE 301

PURPLE/ WHITE 450

ROYAL/ LT GOLD S67

ROYAL/ WHITE 280

SCARLET/ WHITE 408



Warmth 4/10 **Weight** Light

AVAIL PULLOVER

3510 Adult XS-4XL MSRP 35.80

- Outer shell of 100% matte micro polyester
- Lined with 100% polyester taffeta
- Hood with drawcord on Adult sizes S-4XL only
- Front seam pockets
- Raglan sleeves
- Half elastic cuffs
- Open bottom with elastic at side seams



NOT AVAILABLE IN 3XL-4XL



Warmth 2/10 **Weight** Light

PULLOVER JACKET IN A POCKET

3130 Adult S-3XL MSRP 25.50

- Outer shell of 100% nylon taffeta
- Hood with drawcord
- Elastic cuffs





JACKET FOLDS UP INTO ZIPPERED FRONT POCKET

Warmth 5/10

Weight Light



TEMPLATE A4

RANGE PACKABLE PULLOVER

- 229554** Adult S-3XL MSRP 39.10
4XL in select colors
- 229654** Youth S-XL MSRP 38.10
Select Colors

- Tech weave printed Micron™ lightweight polyester, wind/water resistant fabric
- Adjustable 3 piece hood with eyelets and concealed cord locks on Adult sizes only (elastic on youth)
- Raglan sleeves
- Half-elastic cuffs
- Adjustable bottom hem with hidden shockcord closure on right side of pocket on Adult

AVAILABLE IN YOUTH

AVAILABLE IN ADULT 4XL



BLACK 060 NAVY 065 WHITE 005



ROYAL 060 SCARLET 083 FOREST 038 MAROON 045

MORE FROM THE RANGE COLLECTION



229542 | 229642
Range Jacket
pg. 353



222552 | 222652
Range Hoodie
pg. 429





BIONIC COLLECTION



SIDE SEAM POCKETS

LADIES FIT



OPEN BOTTOM HEMS

LADIES FIT

Warmth **4** / 10

Weight **Light**

SABLE PANT

229095	Adult	XS-3XL	MSRP 43.50
229295	Youth	S-XL	MSRP 40.50
229395	Ladies	XS-2XL	MSRP 43.50

- Micron™ lightweight polyester shell
- Mesh (UPPER LEG) and nylon lining (LOWER LEG)
- Covered elastic waistband with inside drawcord
- Front pockets
- Back pockets with zipper
- Zipper on outside lower leg and bottom snaps

AVAILABLE IN ADULT, YOUTH & LADIES'

AVAILABLE IN ADULT ONLY

BLACK/BLACK 425 CARBON/CARBON D87 NAVY/NAVY S14 DK GREEN/WHITE 438

AVAILABLE IN ADULT & YOUTH ONLY

BLACK/ORANGE 423 BLACK/SCARLET 500 MAROON/WHITE 380 BLACK/WHITE 420 NAVY/WHITE 301 ROYAL/WHITE 280 SCARLET/WHITE 408



BLACK 080

RAIDER COLLECTION



Warmth **2** / 10

Weight **Ultra Light**

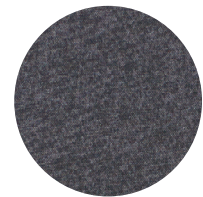
RAIDER PANT

226011	Adult	S-3XL	MSRP 45.80
226211	Youth	S-XL	MSRP 42.80

- Ultra-lightweight Aero-Tec™ fabric provides both weather protection and zero noise, without the bulk with tech print pattern
- Front pockets
- Covered back pocket with zipper
- Zipper on outside lower leg
- Straight leg



CARBON PRINT L99



TECH PRINT



LADIES FIT

TAPERED LEG PANT

7731	Adult	XS-3XL	MSRP 31.90
7732	Youth	S-L	MSRP 30.90
7733	Ladies	XS-2XL	MSRP 31.90

- Heavyweight 100% polyester matte brushed tricot
- Covered elastic waistband with inside drawcord
- Side seam pockets
- Tapered fit
- Back yoke
- Zipper on outside lower leg

AVAILABLE IN ADULT & LADIES



LADIES FIT

LADIES WIDE WAIST BRUSHED BACK POLY/SPANDEX PANT

4814	Ladies	XS-2XL	MSRP 41.70
TALL	Tall	MT-2XLT	MSRP 43.70
4815	Girls	S-L	MSRP 38.70

- Brushed back 90% polyester/10% spandex, 4-way stretch woven fabric
- Soft brushed back poly/spandex knit offers 4-way stretch
- Slim fit through thigh opens up to a moderate flare at the knee
- Heat sealed label
- Low rise, wide flat waistband for secure fit and comfort
- Hidden possession pocket in waistband
- Flatlock stitching provides comfort and resist chafing



AVAILABLE IN ADULT, YOUTH & LADIES



LADIES FIT

LADIES BRUSHED BACK LEGGING

4820	Ladies	S-2XL	MSRP 32.70
4821	Girls	XS-L	MSRP 31.70

- Brushed back 90% polyester/10% spandex, 4-way stretch woven fabric
- Soft brushed back poly/spandex knit offers 4-way stretch
- Heat sealed label
- Low rise, wide flat waistband for secure fit and comfort
- Hidden possession pocket in waistband
- Flatlock stitching provides comfort and resist chafing





LADIES
FIT



FLUX TAPERED LEG PANT

229570	Adult	S-3XL	MSRP 50.10
229670	Youth	S-XL	MSRP 47.10
229770	Ladies	XS-2XL	MSRP 50.10

- Temp-Sof fabric is a colored heather performance fleece with high mechanical stretch and a bird's-eye flecked surface
- Wik-Sof™ Dry-Excel™ inserts
- Covered elastic waistband with inside drawcord
- Side seam pockets
- Welded silicone taping accents except on Black/Black
- Zippered leg openings
- Tapered leg

AVAILABLE IN ADULT
& LADIES ONLY



BLACK
HEATHER/
BLACK
K54



BLACK
HEATHER/
WHITE/
WHITE
879



NAVY
HEATHER/
WHITE/
WHITE
882



LADIES
FIT

FLUX STRAIGHT LEG PANT

229569	Adult	S-3XL	MSRP 50.10
229669	Youth	S-XL	MSRP 47.10
229769	Ladies	XS-2XL	MSRP 50.10

- Temp-Sof fabric is a colored heather performance fleece with high mechanical stretch and a bird's-eye flecked surface
- Wik-Sof™ Dry-Excel™ inserts
- Covered elastic waistband with inside drawcord
- Side seam pockets
- Welded silicone taping accents except on Black/Black
- Zippered leg openings
- Straight leg

AVAILABLE IN ADULT
& LADIES ONLY



BLACK HEATHER/
BLACK
K54



BLACK HEATHER/
WHITE/WHITE
879



NAVY HEATHER/
WHITE/WHITE
882



MICROMESH VENTILATION

LADIES FIT



MICROMESH BLOCKING FOR VENTILATION

LADIES FIT

ZIPPERED HEMS

DETERMINATION COLLECTION



SIDE POCKETS

ZIPPERED BOTTOM HEMS

LADIES FIT

OUTERWEAR BOTTOMS



TRACTION PANT

229132	Adult	S-3XL	MSRP 46.80
229232	Youth	S-XL	MSRP 43.80
229332	Ladies	XS-2XL	MSRP 46.80

- Combined Flex-Sof™ and Dry-Excel™ Perform create a smooth, lightweight, and sueded polyester knit surface with superior abrasion-resistance, designed to keep athletes warm and dry with high mechanical stretch for extended range of motion
- Micromesh blocking placed along heat zones for ventilation
- Covered elastic waistband with inside drawcord
- Side seam pockets
- Low rise on Ladies
- Tapered leg
- Zipper on outside lower leg



BLACK/
BLACK/
WHITE
529

NAVY/
NAVY/
WHITE
U24



VIGOR PANT

229036	Adult	S-3XL	MSRP 46.80
229236	Youth	S-XL	MSRP 43.80
229336	Ladies	XS-2XL	MSRP 46.80

- Flex-Sof™ fabric, this smooth, lightweight, polyester knit surface has superior abrasion-resistance
- High mechanical stretch provides extended range of motion
- Dry-Excel™ Perform pinhole micromesh blocking placed along heat zones for ventilation
- Covered elastic waistband with inside drawcord
- Side seam pockets
- Zipper on outside lower leg
- Straight leg



BLACK/
BLACK/
WHITE
529

NAVY/
NAVY/
WHITE
U24

DETERMINATION PANT

229143	Adult	S-3XL	MSRP 39.50
229243	Youth	S-XL	MSRP 37.00
229343	Ladies	XS-2XL	MSRP 39.50

- Agil-Knit™ is a 100% polyester brushed tricot with a peached finish
- Covered elastic waistband with inside drawcord
- Low rise on Ladies'
- Contrast color side inserts
- Zipper on outside lower leg
- Straight leg



BLACK/
ORANGE
423

BLACK/
SCARLET
500

BLACK/
WHITE
420

BROWN/
WHITE
485

FOREST/
WHITE
436



GRAPHITE/
WHITE
R04

MAROON/
WHITE
380

NAVY/
WHITE
301

ROYAL/
WHITE
280

SCARLET/
WHITE
408



AUGUSTA SPORTSWEAR BRANDS

 **AUGUSTA**
SPORTSWEAR

 **HOLLOWAY**

HIGH FIVE

 **RUSSELL**
ATHLETIC